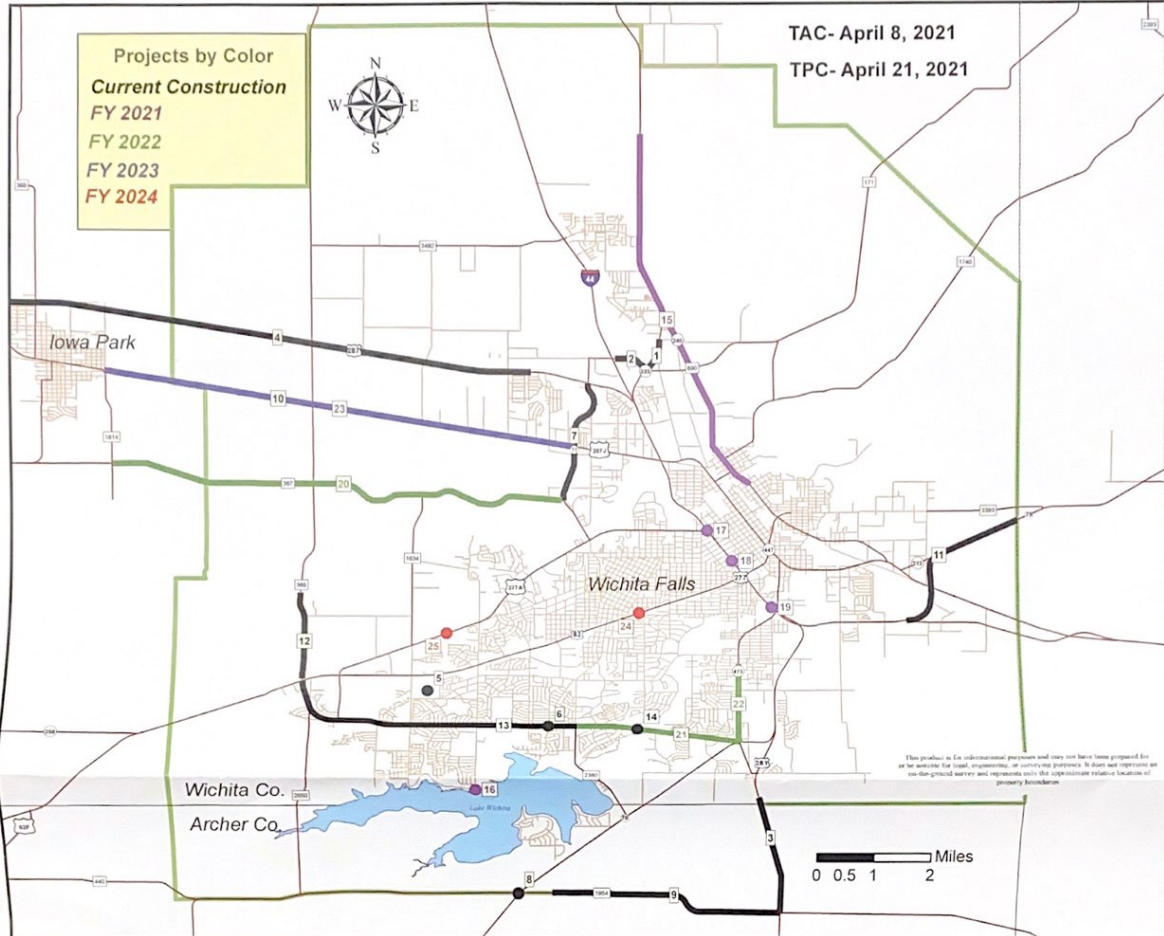


Wichita Falls Metropolitan Planning Organization



ID	Letting	CSJ	Highway	From	To	Description	Amount
1	Aug-19	0685-01-032	SS 325	FM 890	0.6 mi N of FM 890	Reconfigure Interchange	\$3,000,000
2	Aug-19	2582-01-022	FM 890	IH 44	SP 325	Widen Roadway & Overlay	\$2,500,000
3	Nov-19	0249-01-047, etc.	US 281	Near Rathgeber Road	FM 1954	Widen Pavement & Overlay	\$3,928,716
4	Nov-19	0043-09-139	US 287	Near Johnson Road	Near City View Drive	Pavement Rehabilitation	\$2,552,811
5	Dec-19	0903-03-115	VA	Seymour Highway	Barnett Road	Construct Hike & Bike Trail	\$2,124,440
6	Mar-20	0802-02-054	FM 369	Near Rhea Rd	Near Kemp St	Enclose Drainage Ditch	\$5,580,884
7	Jan-21	0043-14-026	Loop 11	US 287	FM 367	Mill & Overlay	\$1,360,149
8	Nov-20	1837-01-013	FM 1954	West of SH 79	SH 79	Realign Intersection	\$616,373
	Nov-20	1837-02-015	FM 1954	SH 79	Near Parker Road	Realign Intersection	\$1,000,000
9	Nov-20	1837-02-016	FM 1954	Near Parker Road	US 281	Widen Pavement and Overlay	\$3,000,000
10	Nov-20	0043-17-033	BU 287J	FM 1814	City View Dr	Districtwide Seal Coat	\$358,688
11	Dec-20	0282-04-039	SH 79	Clay County Line	US 82	Pavement Repair and overlay	\$650,000
12	Dec-20	0802-02-075	FM 369	US 82	Wichita River	Pavement repair/Overlay	\$976,487
13	Feb-21	0802-02-069	FM 369	Near US 82/277 (Kell)	LP 473/SH 79 Interchange	Improve Intersections - Phase 2	\$351,006
14	Feb-21	0802-02-073	FM 369	FM 369 (Southwest Pkwy) at Holiday Creek		Widen Bridge #03-243-0-0802-02-012	\$2,500,000
15	Jul-21	0156-03-049	SH 240	Near Robinson Rd	2nd Street	Improve intersection & safety treat fixed objects	\$2,412,690
16	Jul-21	0903-03-117	VA	Lake Wichita Park	Larry's Marine Center	Construct Hike & Bike Trail	\$1,758,064
17	Jul-21	0043-09-144	IH 44	8th street	6th street	BMP	\$1,000,000
18	Jul-21	0044-01-108	US 277	US 82	8th Street	BMP	\$1,000,000
19	Jul-21	0044-01-109	US 82	Holiday Creek	Loop 473	BMP	\$2,000,000
20	Nov-21	0681-04-042	FM 367	FM 1814	SL 11	Districtwide Seal Coat	\$261,000
21	Dec-21	0802-02-070	FM 369	LP 473	Kemp Blvd	Mill at gutters, underseal and 2" SMA	\$4,000,000
22	Mar-22	0249-11-612	LP-473	Hatten Rd	FM 369	Place C&G to Facilitate Drainage	\$1,500,000
23	Jan-23	0043-17-031	BU 287J	FM 1814	SL 11	Widen Roadway	\$7,000,000
24	Feb-24	0156-04-120	US 82	US 82 EB/WB (Kell)	At Kemp Blvd & Taft Blvd	Upgrade Bridge and Approach Rail	\$820,000
25	Feb-24	0156-14-028	BU 277A	BU 277A	At BNSF RR	Upgrade Bridge and Approach Rail	\$65,000
						Total	\$51,431,308

→ corrected, will remove in August