

Wichita Falls Metropolitan Planning Organization Wichita Falls Urban Transportation Study

www.wfmpo.com

FY 2011-14 TRANSPORTATION IMPROVEMENT PROGRAM



*Approved By
Transportation Policy Committee
May 5, 2010
Amended
April 20, 2011*



Wichita Falls Metropolitan Planning Organization

FY 2011 – FY 2014 Transportation Improvement Program

**Prepared by:
Wichita Falls Metropolitan Planning Organization**

Participating Agencies:

**City of Wichita Falls
City of Pleasant Valley
City of Lakeside City
Wichita County
Archer County
Texas Department of Transportation
Wichita Falls Transit System**

In cooperation with:

**U.S. Department of Transportation
Federal Highway Administration
Federal Transit Administration**

Public Meeting Dates: *April 28, 2010 & May 5, 2010*

Approved by Transportation Policy Committee: *May 5, 2010*

Amended by Transportation Policy Committee: *November 3, 2010, April 20, 2011*

TABLE OF CONTENTS

SECTION I. INTRODUCTION/BACKGROUND	3
A. METROPOLITAN PLANNING ORGANIZATION.....	3
B. PURPOSE OF THE TRANSPORTATION IMPROVEMENT PROGRAM (TIP)	3
C. LEGAL REQUIREMENTS AFFECTING THE TIP.....	4
D. DEFINITION OF PLANNING AREA.....	6
E. PUBLIC INVOLVEMENT PROCESS	8
F. PROJECT SELECTION PROCESS	8
G. PROGRESS FROM PREVIOUS YEARS	8
H. AIR QUALITY ISSUES.....	9
I. AMERICANS WITH DISABILITIES ACT (ADA)	9
J. ENVIRONMENTAL JUSTICE.....	9
K. TOTAL PROJECT COST AND YEAR OF EXPENDITURE DOLLARS.....	10
SECTION II. GLOSSARY.....	12
A. PROJECT LISTINGS	12
B. GROUPED PROJECT CSJ DEFINITION AND FUNDING	14
SECTION III - FEDERALLY FUNDED MOBILITY (HIGHWAY) PROJECTS	15
SECTION IV - STATE FUNDED HIGHWAY PROJECTS	21
SECTION V - LOCALLY FUNDED REGIONALLY SIGNIFICANT PROJECTS.....	23
A. HIGHWAY FINANCIAL SUMMARY	25
SECTION VI - FEDERALLY FUNDED TRANSIT PROJECTS.....	26
SECTION VII - TRANSIT FINANCIAL SUMMARY.....	33
SECTION VIII - ANNUAL MPO SELF-CERTIFICATION.....	34
APPENDIX A - STATEWIDE GROUPED CSJ HIGHWAY PROJECTS	36
APPENDIX B - HIGHWAY FINANCIAL SUMMARY	41

TABLES AND FIGURES

TABLE 1 – PROGRESS FROM PREVIOUS YEARS.....	9
TABLE 2 - GROUPED CSJ DEFINITION AND FUNDING	14
FIGURE 1 – MPO BOUNDARY MAP.....	7
FIGURE 2 – 2011-2014 TIP PROJECT LOCATION MAP	16

SECTION I. INTRODUCTION/BACKGROUND

A. METROPOLITAN PLANNING ORGANIZATION

The Federal Aid Highway Act of 1962 established the “3C’s Concept” of transportation planning that encouraged a continuing, comprehensive planning process carried on cooperatively by states and local communities from each urban area of more than fifty thousand population. The City of Wichita Falls conducted the first transportation planning survey of its kind in 1964 under the designation Wichita Falls Urban Transportation Plan, Volume 1, Origin-Destination Survey. In 1967, the City of Wichita Falls signed an agreement with the State of Texas that established overall transportation policy guidance for the Wichita Falls Metropolitan Area by creating the Policy Advisory Committee (PAC). In 1973, the State revised the agreement with the City of Wichita Falls in order to establish the Technical Advisory Committee (TAC). The Technical Advisory Committee provided support to the Policy Advisory Committee and helped the Policy Board make informed transportation policy decisions for the Wichita Falls Metropolitan Area.

Transportation Planning for the Wichita Falls Metropolitan Area formally began at the City of Wichita Falls in 1973 when the Governor of the State of Texas, acting by, and through the State Department of Highways and Public Transportation designated the City of Wichita Falls, acting through its Policy Advisory Committee, to be the Metropolitan Planning Organization (MPO) for the Wichita Falls Urban Transportation Study Area. This designation changed in June 2000 and replaced the Policy Advisory Committee (PAC) with the Transportation Policy Committee (TPC), which is now the designated Metropolitan Planning Organization. The Technical Advisory Committee continues to support the Transportation Policy Committee in their policy-making decisions.

B. PURPOSE OF THE TRANSPORTATION IMPROVEMENT PROGRAM (TIP)

The United States Department of Transportation through the Federal Highway Administration and the Federal Transit Administration requires the development of a Transportation Improvement Program (TIP). The TIP is a staged, multiyear program of projects proposed for funding by federal, state, and local sources within the Wichita Falls Metropolitan Area. The 2011-2014 TIP identifies roadway and transit projects programmed for construction within the next four years inside the Wichita Falls Metropolitan Area. The Wichita Falls MPO (WFMPO) in cooperation with the local governments of the City of Wichita Falls, the City of Lakeside City, the City of Pleasant Valley, Archer County, Wichita County, the Texas Department of Transportation, and the Wichita Falls Transit System developed the 2011-2014 TIP. The Wichita Falls MPO developed the TIP in accordance with the metropolitan planning requirements set forth in the Statewide and Metropolitan Planning Final Rule 23 CFR Part 450 (Federal Register / Vol. 72, No. 30 / Pg. 7261) and 49 CFR Part 613 (Federal Register / Vol. 72, No. 30 / Pg. 7285) as required by the Intermodal Surface Transportation Efficiency Act of 1991 (ISTEA), which was reauthorized as the Transportation Equity Act for the 21st Century (TEA-21), and was again reauthorized as the Safe, Accountable, Flexible, Efficient Transportation Equity Act: A Legacy for Users (SAFETEA-LU), which expired on February 28, 2010. As of this writing, Congress continues to pass continuing resolutions of SAFETEA-LU in order to fund transportation projects, planning agencies, and their programs. Congress is expected to produce a new transportation reauthorization bill to supersede SAFETEA-LU by the end of 2010 or early 2011. The WFMPO prepared the 2011-2014 TIP under the guidelines set forth in the Code of Federal Regulations (referenced above) as updated on February 14, 2007 in the Federal Register, and as prescribed in SAFETEA-LU.

SAFETEA-LU (Safe, Accountable, Flexible, Efficient Transportation Equity Act: A Legacy for Users) was enacted on August 10, 2005 and requires the Metropolitan Planning Organizations (MPO) to provide for consideration of projects and strategies that will serve to advance eight (8) transportation planning factors. Those factors are as follows:

1. Support Economic Vitality of the metropolitan area, especially by enabling global, competitiveness, productivity, and efficiency.
2. Increase safety of transportation system for motorized and non-motorized users.
3. Increase the security of transportation system for motorized and non-motorized users.
4. Increase the accessibility and mobility of people and freight.
5. Protect and enhance the environment, promote energy conservation, improve the quality of life, and promote consistency between transportation improvements and State and local planned growth and economic development patterns.
6. Enhance the integration and connectivity of the transportation system, across and between modes, for people and freight.
7. Promote efficient system management and operation.
8. Emphasize the preservation of the existing transportation system.

WFMPO addressed these eight planning factors in detail in Chapter 4 – Vision, Goals, and Objectives [SAFETEA-LU Addendum] of the 2005-2030 Metropolitan Transportation Plan. In Section 1 Introduction/Goals and Objectives of the 2010-2035 update of the Metropolitan Transportation Plan, the WFMPO developed enabling goals and objectives that will continue to support and advance the eight transportation planning factors of SAFETEA-LU. It is important for the Wichita Falls Metropolitan Area to comply with any new trends in program management and funding mechanisms so it can continue to build a transportation system supported by state and federal agencies and funding sources. The 2010-2035 Metropolitan Transportation Plan (MTP) takes existing policies and best estimates future ones to create goals, objectives, and strategies that are visionary, yet achievable. The 2010-2035 MTP goals and objectives take into account policy directions from SAFETEA-LU, national trends in transportation, state policies, and local initiatives.

C. LEGAL REQUIREMENTS AFFECTING THE TIP

SAFETEA-LU and the Federal Transit Act describe the requirements of the TIP in general terms. Requirements that are more specific are contained in the Statewide and Metropolitan Planning Rules contained in 23 CFR Part 450 and 49 CFR Part 613. This section summarizes those requirements and describes the methods through which they are accomplished.

All roadway and transit projects receiving U.S. Department of Transportation funding under Title 23 U.S.C. – The Federal-Aid Highway Act and Title 49 U.S.C. – The Federal Transit Act must be financially constrained, and listed, in the TIP. The WFMPO initiated all proposed projects in this document in a manner consistent with the federal guidelines found in Section 450, Subpart B of the Title 23 Code of Federal Regulations and in Section 613, Subpart B of the Title 49 Code of Federal Regulations.

Federal regulations mandate that the metropolitan transportation planning process must include development of a TIP for the metropolitan planning area by the MPO, in cooperation with the State Department of Transportation, local governments, and public transportation authorities. WFMPO outlines below a brief discussion of how it complied with the specific requirements of the TIP.

- **The TIP must be updated at least every four years.**

The current policy of the WFMPO is to update the TIP for the Wichita Falls Metropolitan Area on a quarterly cycle as project implementation costs, schedules, and scopes change, and as the MPO identify new projects through funding initiatives. WFMPO will make all refinements to the TIP in coordination with TxDOT, the Wichita Falls Transit System, and counties and local governments inside the Wichita Falls Metropolitan Area.

- **In nonattainment and maintenance areas for transportation-related pollutants, the Federal Highway Administration (FHWA) and the Federal Transit Administration (FTA), as well as the MPO, must make a conformity determination on any new or amended TIP's (unless the amendment consists of exempt projects).**

According to the U.S. Environmental Protection Agency, the Wichita Falls Metropolitan Area qualifies as an "air attainment" area. The quality of the air in Wichita Falls is good. Therefore, WFMPO is not required to make a conformity determination on any of the projects listed in the TIP.

- **There must be reasonable opportunity for public comment.**

On July 25, 2007, the Transportation Policy Committee adopted the WFMPO Public Participation Plan, which meets the requirements mandated by federal law. WFMPO held regular, supplemental, and other applicable public meetings throughout the 2011-2014 TIP development process in accordance with this policy and federal law. [Section I, Part E. Public Involvement Process](#) describes the process followed in the development of the 2011-2014 TIP.

- **The TIP shall cover a period of not less than four years, but may cover a longer period if it identifies priorities and financial information for the additional years.**

In accordance with federal guidelines, the WFMPO 2011-2014 TIP identifies roadway and transit projects programmed within the next four years. WFMPO programs only those projects in the years for which federal and state funding can be committed or reasonably expected for each category.

- **The TIP shall be financially constrained by year and include a financial plan that demonstrates which projects can be implemented using current revenue sources and which projects are to be implemented using proposed revenue sources.**

The 2011-2014 TIP is financially constrained by category for the first four years of the TIP as required by federal regulation. WFMPO has identified and listed the projects in the four-year financial plan in Sections [III](#), [IV](#), [V](#), [VII](#), and [Appendix A](#).

- **The TIP shall include projects as required by federal regulation.**

According to the Metropolitan and Statewide Planning Regulations (23 CFR Section 450.324(c)), the TIP shall include all transportation projects or identified phases of a project, within the metropolitan area, proposed for funding under Title 23, U.S.C. The Federal Aid Highway Act, and Title 49 the Federal Transit Act. The TIP shall also include all regionally significant transportation projects scheduled for implementation with federal, state, or local funds consistent with the Metropolitan Transportation Plan.

Detailed project listings are included in Sections [III](#), [IV](#), [V](#), [VII](#), and [Appendix A](#) of this document. Information included in the project description includes: sufficient descriptive material to identify the location of the project, the type of work to be performed, estimated total cost, amount of committed federal funds for each program year, proposed funding source, and identification of the funding recipient and state and local agencies responsible for carrying out the project.

- **In nonattainment and maintenance areas, projects included shall be specified in sufficient detail to permit air quality conformity analysis.**

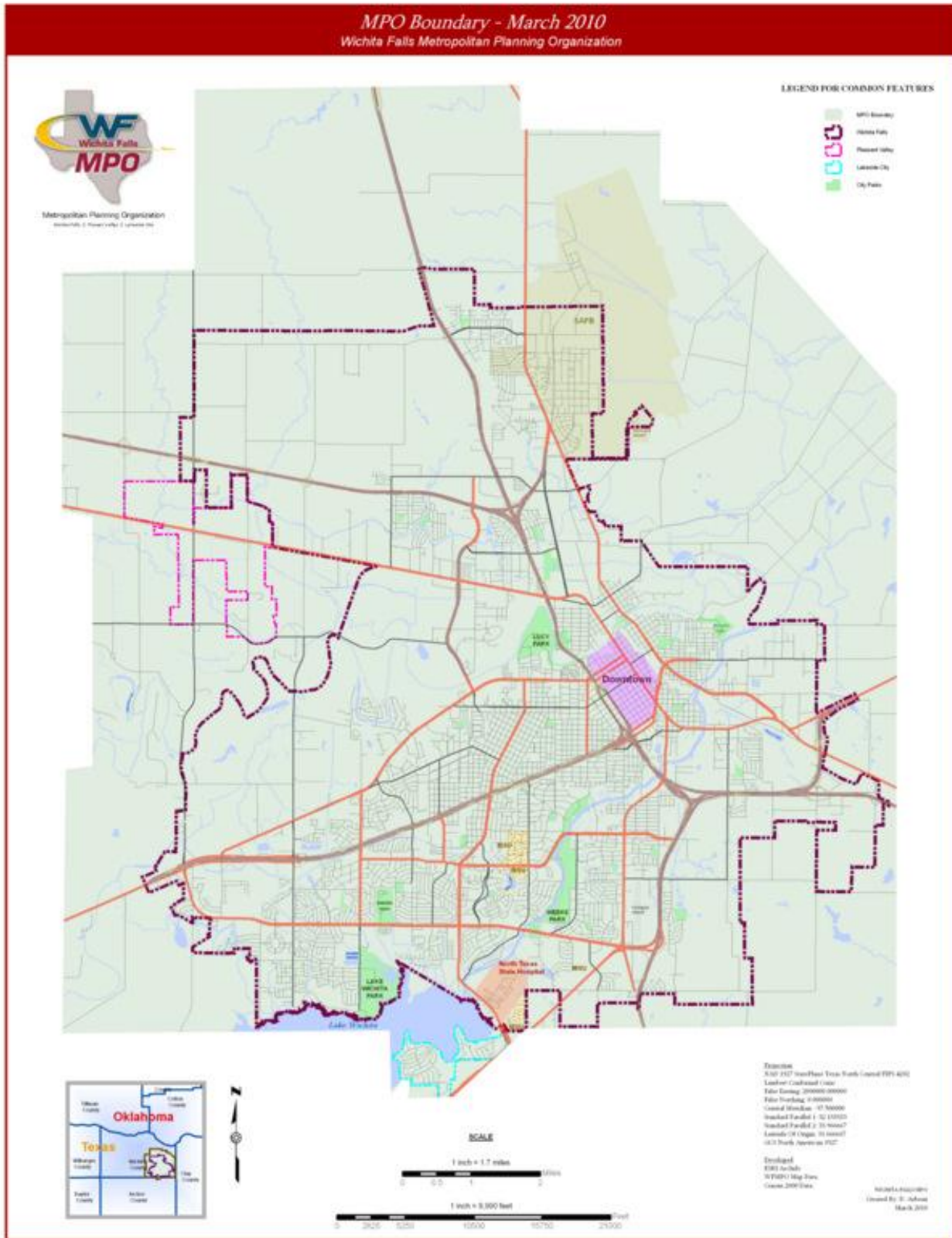
As stated in the second bullet above, the Wichita Falls Metropolitan Area is an “air attainment” area. At this time, the WFMPO is not required to perform air quality analysis on the projects listed in the TIP. However, if the Wichita Falls Metropolitan Area became a nonattainment area then the WFMPO would have to provide the design concept, or type of facility identified for each project contained in the project listings in Sections [III](#), [IV](#), [V](#), and [VII](#). The design scope identifies the design aspects that will affect the projects' impact on regional emissions, such as the number of lanes or tracks to be constructed, length of project, signalization, access control, etc.

D. DEFINITION OF PLANNING AREA

The Wichita Falls Metropolitan Planning Organization encompasses the eastern portion of Wichita County, which includes the City of Wichita Falls and Pleasant Valley, and a small portion of Archer County, which includes Lakeside City. The MPO area contains 150.01 square miles.

The population of Wichita Falls was 99,846 according to the U.S. Census Bureau estimates for 2005. Also in 2005, the estimated population for Wichita County was 125,894. In contrast, the 2000 U.S. Census indicated the City of Wichita Falls Metropolitan Statistical Area (MSA) to be 140,518. The City of Lakeside City had an estimated 2005 population of 1,032 while the City of Pleasant Valley had an estimated 2005 population of 374. See the Wichita Falls MPO boundary map in [Figure 1](#) on the next page.

Figure 1 – MPO Boundary Map



E. PUBLIC INVOLVEMENT PROCESS

WFMPO developed the 2011-2014 Transportation Improvement Program (TIP) in accordance with guidelines listed in the MPO's Public Participation Plan. The public involvement component of the TIP process provides an opportunity for concerned residents to provide input, and voice concerns and priorities regarding proposed roadway and public transportation projects.

The Public Participation Plan requires at least one public hearing to present the Transportation Improvement Program to the public. The WFMPO held two public hearings during the development of this TIP document. The Public Participation Plan requires a public comment period of 30 days prior to the meeting at which the Transportation Policy Committee approves the Transportation Improvement Plan. TIP amendments require a 10-day comment period before adoption by the Policy Board. WFMPO posted the TIP document at least 30 days prior to its adoption by the Policy Board.

WFMPO published Legal Notices of all the transportation planning public meetings prior to the adoption of the 2011-2014 TIP. WFMPO published Legal Notices in the daily local newspaper *Times Record News* and the Spanish language publication *Fronteras*. To ensure an opportunity for all interested parties to review and comment on the TIP, the MPO has developed an extensive email list that includes Federal, State, Tribal and Local agencies and all interested parties, including stakeholders and citizens, as discussed in Methods and Strategies of the Public Participation Plan. Additionally, WFMPO published the TIP on the WFMPO's website at www.wfmppo.com and www.wfmppo.org for people to view.

F. PROJECT SELECTION PROCESS

Federal and state funded capacity expansion projects come from the Metropolitan Transportation Plan. Projects in the Metropolitan Transportation Plan advance to the Short-Range, ten-year plan of the Transportation Improvement Program (TIP) based on funding availability. The approved 2011-2014 TIP programs projects located within the Wichita Falls Metropolitan Area. The TIP assigns each project to a specific fiscal year where project implementation is expected. The TIP gives priority to first year projects and may implement them as soon as plans are completed and funds appropriated. If unable to implement first year projects then the TIP considers second year projects as second priority. The TIP implements second year projects as plans are completed and funds appropriated. Projects in the third and fourth years will follow this same procedure. The WFMPO developed this procedure in cooperation with the Texas Department of Transportation and the Wichita Falls Transit System. See Section 134 (h) (2) of Title 23 U.S.C. as amended.

G. PROGRESS FROM PREVIOUS YEARS

The 2008-2011 Transportation Improvement Program implemented, scheduled for letting, or designed the following projects during FY 2008 and FY 2009. [Table 1](#) lists these projects below. For updates regarding highway and street projects, please refer to the Annual Project Listings, which Wichita Falls MPO provides at its website on www.wfmppo.com or www.wfmppo.org or by requesting a copy from Wichita Falls MPO, 2100 Seymour Hwy., Wichita Falls, Texas 76301, via email through the above websites or by calling (940) 761-7450. The MPO may also provide progress updates during Transportation Advisory (TAC) and Transportation Policy (TPC) committee meetings throughout the year. WFMPO provides minutes of these meetings on the website.

Table 1 – Progress from Previous Years

Project Name	Project Limits	Description	Estimated Cost
U.S. 82	From 0.3 miles west of Fairway Blvd. to 0.2 miles west of Kemp Blvd.	Repair Embankment Slopes (erosion control)	\$600,421
Loop 11	IH-44 to U.S 287 Frontage Road	New Location Non-Freeway Facility	\$4,009,373
U.S. 82	2.10 miles West of FM 369 to McNiel	Construct Main Lanes and Bridges	\$28,367,400
Holliday Creek Trail	East Scott St. to Hamilton Park	Construct Bicycle/Pedestrian Trail	\$2,582,604

H. AIR QUALITY ISSUES

The Clean Air Act Amendments of 1990 have significantly affected transportation activities. The impacts include a conformity analysis on all transportation programs, including the TIP, as well as statewide penalties if non-attainment areas do not meet national ambient air quality standards by the designated years for their areas. Currently, the Wichita Falls Metropolitan Area meets all requirements in all categories to be an “Attainment Area”.

I. AMERICANS WITH DISABILITIES ACT (ADA)

All projects considered for funding, regardless of the source, will include provisions for meeting the needs of the disabled. The Cities of Wichita Falls, Pleasant Valley and Lakeside City, Wichita County, the Texas Department of Transportation and the Wichita Falls Transit System continue their efforts to identify and aid the disabled in their mobility needs. All public transportation buses purchased by the City of Wichita Falls are low-floor, front-kneeling, hydraulic ramp equipped and fully accessible to the mobility impaired.

Falls Ride, owned by the City of Wichita Falls, operates a Route Deviation/Demand Response transit system that deviates up to one-quarter mile from the main route to pick up qualifying ADA passengers. Falls Ride picks up qualifying ADA passengers at the curb and delivers them to their destination. Falls Ride operates six main routes that deviate and one express route that serves Sheppard Air Force Base. Qualifying ADA passengers call one day in advance to schedule pick-ups and drop-offs.

J. ENVIRONMENTAL JUSTICE

Title VI of the 1964 Civil Rights Act (42 U.S.C. 2000d-1) states that “No person in the United States shall, on the ground of race, color, or national origin, be excluded from participation in, be denied the benefits of, or be subjected to discrimination under any program or activity receiving Federal financial assistance.” President Clinton’s Executive Order on Environmental Justice in 1999 further amplifies Title VI by providing that “each federal agency shall make achieving environmental justice part of its mission by identifying, as appropriate, disproportionately high and adverse human health or environmental effects of its programs, policies, and activities on minority populations and low-income populations.”

Transportation projects affect the environment and the way we live. Low-income and minority populations should receive an equitable distribution of proposed transportation benefits without

suffering from excessively high and difficult impacts to their quality of life. The Wichita Falls MPO developed a process starting in 2005 whereby it could present future planned surface transportation projects to the public for comment and receive project nominations back from them. Each year, usually in September, WFMPO combines projects from the Metropolitan Transportation Plan and the Transportation Improvement Program with project nominations from the public and other government agencies to develop a prioritized project list for the Wichita Falls Metropolitan Area. WFMPO uses the results of this list to develop the annual Environmental Justice Analysis Report. MPO staff analyzes each new project that comes in for impacts on minority and low-income communities. If staff detects adverse impacts to low-income and minority populations then staff looks for ways to avoid the project entirely, minimize or reduce its severity, or mitigate the impact by taking action to alleviate or offset the effect by replacing it with an appropriated resource. If none of these methods works then staff will use enhancement techniques to add a desirable or attractive feature to the project to make it fit more harmoniously into the community. However, this will not replace lost resources or alleviate project impacts. Once complete, MPO staff documents the analysis of each new project in the report and presents it to the Policy Board for review and approval.

K. TOTAL PROJECT COST AND YEAR OF EXPENDITURE DOLLARS

The Safe, Accountable, Flexible, and Efficient Transportation Equity Act: A Legacy for Users (SAFETEA-LU) superseded the Transportation Equity Act for the 21st Century (TEA-21) and became law on August 10, 2005. SAFETEA-LU legislation requires Transportation Improvement Programs (TIP's) to list Total Project Costs and Year of Expenditure dollars for each project. The Year of Expenditure, or simply stated, the year in which construction or a transit project is anticipated, has been identified for each of the projects. The WFMPO applied an annual inflation rate of 4% to all projects listed in the TIP. The TIP provides Total Project Costs to detail the parts of each project such as preliminary engineering, right of way, utility relocation and in the case of transit projects: operating, planning, preventive maintenance, and capital. The Total Project Cost and Year of Expenditure provide the public with a complete description of the components that make up each of the projects.

TxDOT and the MPO try to anticipate future revenues in order to plan for construction, operation, maintenance, and implementation needs of area surface transportation projects. The expenditures for the Transportation Improvement Program are financially constrained by the Year of Expenditure requirements of SAFETEA-LU. MPO staff base their financial constraint on an analysis of past funding, expected funding, and expected needs. The MPO analyzes federal, state, and local revenue sources to estimate total future revenues for projects in the TIP. The MPO utilized A Rate of Growth of 4% per year for all projects, which is consistent with a 4% annual inflation rate. MPO staff based the Rate of Growth on consultations with the Texas Department of Transportation (TxDOT). WFMPO reasonably expects funding for the projects in this document to come from federal, state, and local sources. The planning staff must account for cost escalation as part of the fiscal constraint determination.

Public transportation, or transit, funding apportionments have stayed relatively unchanged during the last five years. However, they are not increasing enough to cover the ever-increasing rate of inflation. The burden of local match by cities, counties, and regional transit providers continues to grow. Some transit providers are looking at ways to address funding gaps. Such methods include reducing service hours and routes, reducing the rate at which they replace buses, and delaying major capital projects like bus terminals. Fortunately, "Falls Ride", the City of Wichita Falls' transit system, has not had to resort to any to any of these tactics. In fact, in July 2008 Falls Ride expanded route coverage by adding one route that connects the two main

routes in the north with the three main routes in the south. MPO and Transit staff reworked the five existing routes and reduced headways on all routes by an average of fifteen minutes. The last adjustment to bus fares was in 1987. Therefore, staff analyzed and adjusted them as well. Because of all these changes and improvements, passenger counts are up, which translates to more revenue for system operations. The Transit Administrator also instituted a new bus advertising policy to generate additional revenue. As of this writing, the advertising program has been extremely successful generating as estimated \$50,000 to \$60,000 per year. Furthermore, the City of Wichita Falls plans to build a new downtown transit center in the next two to three years.

SECTION II. GLOSSARY

A. PROJECT LISTINGS

TxDOT DISTRICT	Wichita Falls District Office of the Texas Department of Transportation
COUNTY	County in which project is located
CITY	City in which project is located
LET DATE	Approximate date (month/year) that a project will go to contract. Project construction/implementation initiates when the project "lets"
HIGHWAY	Project name or location
LIMITS (FROM)	Cross street or location identifying the initial limits of a project
LIMITS (TO)	Cross street or location identifying the end limits of a project
LAYMANS DESCRIPTION	Brief description of work performed on the project
REVISION DATE	This entry refers to the revision date (i.e. the date a project is added or changed in the Statewide TIP). Most projects listed in the 2011-2014 TIP have a revision date to represent the anticipated approval date of the of the 2011-2014 TIP/Statewide TIP
LOCAL CONTRIBUTION	Local funds contributed to a project in excess of the 20 percent match required to receive federal reimbursement on a project
STATEWIDE CSJ	TxDOT has the ability to program projects through a statewide program using "Statewide CSJ's". Projects funded under these CSJ's are listed individually in Appendix A of the 2011-2014 TIP. The CSJ's provided under this entry are for informational purposes only
NEPA STATUS	All projects receiving federal funding must undergo environmental review. The NEPA status entry indicates the current stage of environmental review for each project (i.e. pending, cleared, exempt)
CS	City Street
CSJ	Control Section Job Number – TxDOT assigned number for projects entered into the Project Development Program (PDP) and Unified Transportation Program (UTP)
PHASE	Project Phase – for Federal Funding (C=Construction, E=Engineering, ROW=Right of Way Acquisition, and T=Transfer)

MPO ID MPO Project Identification Number – A number assigned by the MPO for local project identification for use in relating projects to the Metropolitan Transportation Plan.

TMA Transportation Maintenance Area

STP Surface Transportation Program

FUNCTIONAL CLASS Federal Functional Class – Federal classification of streets and highways into functional operating characteristics. Categories are:
Interstate
Other Urban Freeways and Expressways
Other Principal Arterials
Minor Arterials
Urban Collectors and Rural Major Collectors
Rural Minor Collectors
Urban and Rural Local Streets and Roads

FUNDING CATEGORY TxDOT category of funding used to fund the project

1. Preventive Maintenance and Rehabilitation
2. Metropolitan Area (TMA) Corridor Projects
3. Urban Area (Non-TMA) Corridor Projects
4. Statewide Connectivity Corridor Projects
5. Congestion Mitigation and Air Quality (CMAQ) Improvement
6. Structures Replacement and Rehabilitation
7. STP Metropolitan Mobility and Rehabilitation
8. STP Safety
9. STP Transportation Enhancements
10. Supplemental/Miscellaneous Transportation Projects
11. District Discretionary
12. Strategic Priority

B. GROUPED PROJECT CSJ DEFINITION AND FUNDING

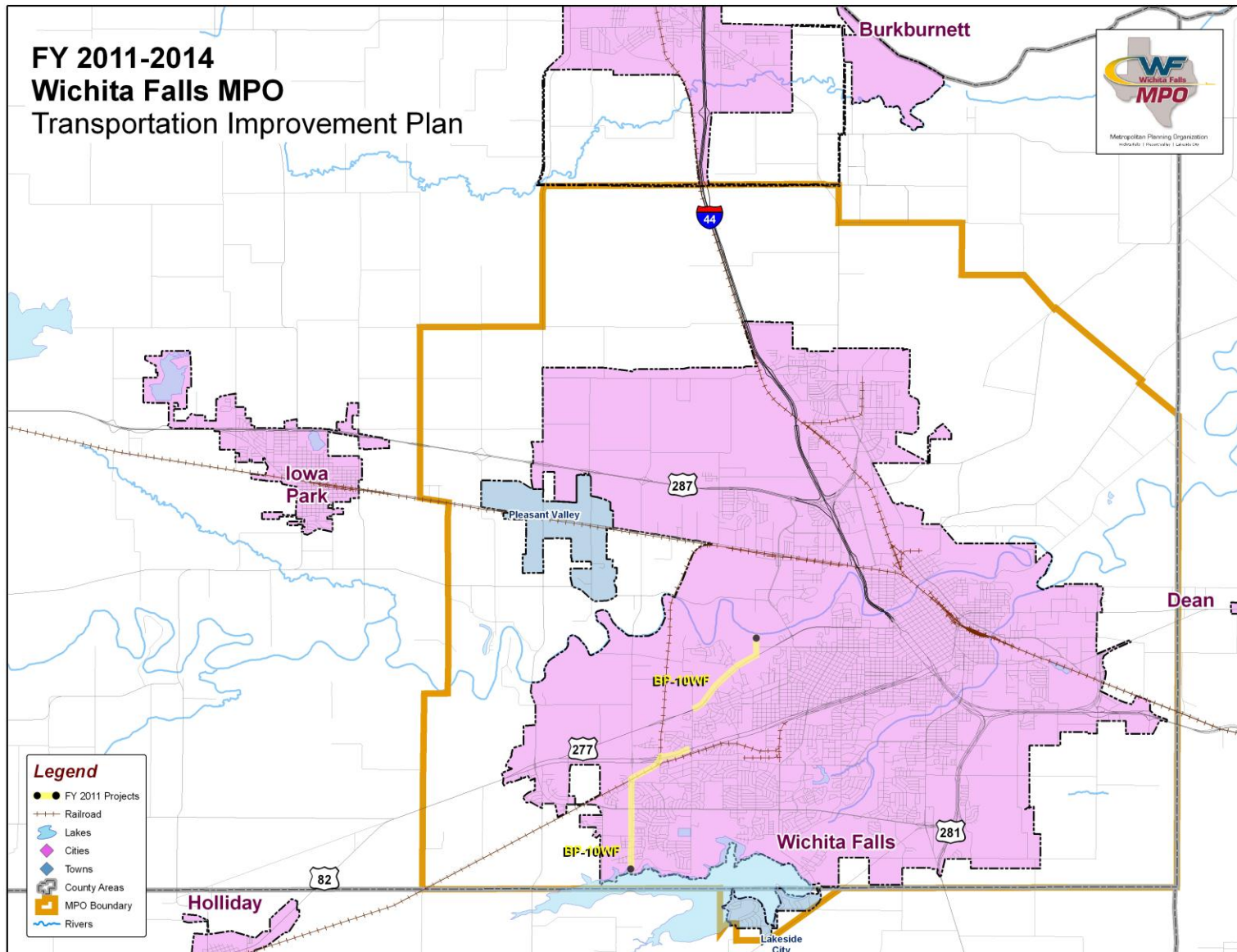
Table 2 - Grouped CSJ Definition and Funding

Proposed CSJ	Grouped Project Category	Definition and Funding
5000-00-950	Preliminary Engineering	Preliminary Engineering for any project that is not added capacity in a non-attainment area. Includes activities which do not involve or lead directly to construction such as planning and technical studies, grants for training and research programs.
5000-00-951	Right of Way Acquisition	Right of Way acquisition for any project that is not added capacity in a non-attainment area. Includes relocation assistance, hardship acquisition and protective buying.
5000-00-952 5000-00-957 5000-00-958	Preventive Maintenance and Rehabilitation	Projects to include pavement repair to preserve existing pavement so that it may achieve its designed loading. Includes seal coats, overlays, resurfacing, restoration and rehabilitation done with existing ROW. Also includes modernization of a highway by reconstruction, adding shoulders or adding auxiliary lanes (e.g., parking, weaving, turning, climbing, non-added capacity).
5000-00-953	Bridge Replacement and Rehabilitation	Projects to replace and/or rehabilitate functionally obsolete or structurally deficient bridges.
5000-00-954	Railroad Grade Separations	Projects to construct or replace existing highway-railroad grade crossings and to rehabilitate and/or replace deficient railroad underpasses, resulting in no added capacity.
5800-00-950	Safety	Projects to include the construction or replacement/rehabilitation of guard rails, median barriers, crash cushions, pavement markings, skid treatments, medians, lighting improvements, railroad/highway crossing warning devices, fencing, intersection improvements (e.g., turn lanes), signalization projects and interchange modifications. Also includes projects funded via the Federal Hazard Elimination Program and the Federal Railroad Signal Safety Program.
5000-00-956	Landscaping	Project consisting of typical right of way landscape development, establishment and aesthetic improvements to include any associated erosion control and environmental mitigation activities.
5800-00-915	Intelligent Transportation Systems Deployment	Highway traffic operation improvement projects including the installation of ramp metering control devices, variable message signs, traffic monitoring equipment and projects in the Federal ITS/IVHS programs.
5000-00-916	Bicycle and Pedestrian	Construction or rehabilitation of bicycle and pedestrian lanes, paths and facilities.
5000-00-917	Safety Rest Areas and Truck Weigh Stations	Construction and improvement of rest areas and truck weigh stations.
5000-00-918	Transit Improvements	Projects include the construction and improvement of small passenger shelters and information kiosks. Also includes the construction and improvement of rail storage/maintenance facilities bus transfer facilities here minor amounts of additional land are required and there is not a substantial increase in the number of users.

**SECTION III
FEDERALLY FUNDED
MOBILITY (HIGHWAY) PROJECTS**

2011-2014 Transportation Improvement Program Projects

Figure 2 – 2011-2014 TIP Project Location Map



2011-2014 STATEWIDE TRANSPORTATION IMPROVEMENT PROGRAM
 WICHITA FALLS METROPOLITAN PLANNING ORGANIZATION
 FY 2011

Wednesday, November 03, 2010

PAGE: 1 of 1

DISTRICT	COUNTY	CSJ	HWY	PHASE	CITY	PROJECT SPONSOR	YOE COST
3 - Wichita	WICHITA	0903-03-099	CS	C	WICHITA FALLS	TxDOT	\$ 3,097,036
LIMITS FROM: ALONG SEYMOUR HIGHWAY						REVISION DATE: Nov-10	
LIMITS TO: ALONG BARNETT ROAD						MPO PROJ NUM: BP-10WF	
PROJECT HIKE AND BIKE TRAIL (SECTIONS 3, 4, 5 AND 8)						FUNDING CAT(S): 9	
DESCRIPTION:						PROJECT HISTORY: NOV. 2010 REVISIONS	
REMARKS P7:							

TOTAL PROJECT COST INFORMATION			AUTHORIZED FUNDING BY CATEGORY/SHARE					
			FEDERAL	STATE	LOCAL	LC	TOTAL	
PRELIMINARY ENGINEERING:	\$ 151,755.00	COST OF APPROVED PHASES: 9-ENHANCEMTS	\$ 2,477,629	\$ -	\$ 619,407	\$ -	\$ 3,097,036	
ROW PURCHASE:	\$ -		\$ -	\$ -	\$ -	\$ -	\$ -	
CONSTRUCTION COST:	\$ 3,097,036.00		\$ -	\$ -	\$ -	\$ -	\$ -	
CONSTRUCTION ENGINEERING:	\$ 154,852.00		TOTAL:	\$ 2,477,629	\$ -	\$ 619,407	\$ -	\$ 3,097,036
CONTINGENCIES:	\$ 201,307.00							
INDIRECT COSTS:	\$ 259,841.00							
BOND FINANCING:	\$ -							
OTHER FIELD:	\$ -							
TOTAL PROJEC COST:	\$ 3,864,791.00							

DISTRICT	COUNTY	CSJ	HWY	PHASE	CITY	PROJECT SPONSOR	YOE COST
3 - Wichita						TxDOT	\$ -
LIMITS FROM:						REVISION DATE:	
LIMITS TO:						MPO PROJ NUM:	
PROJECT						FUNDING CAT(S):	
DESCRIPTION:						PROJECT HISTORY:	
REMARKS P7:							

TOTAL PROJECT COST INFORMATION			AUTHORIZED FUNDING BY CATEGORY/SHARE					
			FEDERAL	STATE	LOCAL	LC	TOTAL	
PRELIMINARY ENGINEERING:	\$ -	COST OF APPROVED PHASES:	\$ -	\$ -	\$ -	\$ -	\$ -	
ROW PURCHASE:	\$ -		\$ -	\$ -	\$ -	\$ -	\$ -	
CONSTRUCTION COST:	\$ -		\$ -	\$ -	\$ -	\$ -	\$ -	
CONSTRUCTION ENGINEERING:	\$ -		TOTAL:	\$ -	\$ -	\$ -	\$ -	\$ -
CONTINGENCIES:	\$ -							
INDIRECT COSTS:	\$ -							
BOND FINANCING:	\$ -							
OTHER FIELD:	\$ -							
TOTAL PROJEC COST:	\$ -							

DISTRICT	COUNTY	CSJ	HWY	PHASE	CITY	PROJECT SPONSOR	YOE COST
3 - Wichita						TxDOT	\$ -
LIMITS FROM:						REVISION DATE:	
LIMITS TO:						MPO PROJ NUM:	
PROJECT						FUNDING CAT(S):	
DESCRIPTION:						PROJECT HISTORY:	
REMARKS P7:							

TOTAL PROJECT COST INFORMATION			AUTHORIZED FUNDING BY CATEGORY/SHARE					
			FEDERAL	STATE	LOCAL	LC	TOTAL	
PRELIMINARY ENGINEERING:	\$ -	COST OF APPROVED PHASES:	\$ -	\$ -	\$ -	\$ -	\$ -	
ROW PURCHASE:	\$ -		\$ -	\$ -	\$ -	\$ -	\$ -	
CONSTRUCTION COST:	\$ -		\$ -	\$ -	\$ -	\$ -	\$ -	
CONSTRUCTION ENGINEERING:	\$ -		TOTAL:	\$ -	\$ -	\$ -	\$ -	\$ -
CONTINGENCIES:	\$ -							
INDIRECT COSTS:	\$ -							
BOND FINANCING:	\$ -							
OTHER FIELD:	\$ -							
TOTAL PROJEC COST:	\$ -							

PHASE: C = CONSTRUCTION, E = ENGINEERING, R = ROW, T = TRANSFER

2011-2014 STATEWIDE TRANSPORTATION IMPROVEMENT PROGRAM
 WICHITA FALLS METROPOLITAN PLANNING ORGANIZATION

Wednesday, November 03, 2010

PAGE: 1 of 1

FY 2012

DISTRICT	COUNTY	CSJ	HWY	PHASE	CITY	PROJECT SPONSOR	YOE COST
3 - Wichita						TxDOT	\$ -
LIMITS FROM:						REVISION DATE:	
LIMITS TO:						MPO PROJ NUM:	
PROJECT						FUNDING CAT(S):	
DESCRIPTION:						PROJECT HISTORY:	
REMARKS P7:							
TOTAL PROJECT COST INFORMATION			AUTHORIZED FUNDING BY CATEGORY/SHARE				
PRELIMINARY ENGINEERING:	\$ -	COST OF APPROVED PHASES:	FEDERAL	STATE	LOCAL	LC	TOTAL
ROW PURCHASE:	\$ -		\$ -	\$ -	\$ -	\$ -	\$ -
CONSTRUCTION COST:	\$ -		\$ -	\$ -	\$ -	\$ -	\$ -
CONSTRUCTION ENGINEERING:	\$ -		TOTAL:	\$ -	\$ -	\$ -	\$ -
CONTINGENCIES:	\$ -						
INDIRECT COSTS:	\$ -						
BOND FINANCING:	\$ -						
OTHER FIELD:	\$ -						
TOTAL PROJEC COST:	\$ -						
DISTRICT	COUNTY	CSJ	HWY	PHASE	CITY	PROJECT SPONSOR	YOE COST
3 - Wichita						TxDOT	\$ -
LIMITS FROM:						REVISION DATE:	
LIMITS TO:						MPO PROJ NUM:	
PROJECT						FUNDING CAT(S):	
DESCRIPTION:						PROJECT HISTORY:	
REMARKS P7:							
TOTAL PROJECT COST INFORMATION			AUTHORIZED FUNDING BY CATEGORY/SHARE				
PRELIMINARY ENGINEERING:	\$ -	COST OF APPROVED PHASES:	FEDERAL	STATE	LOCAL	LC	TOTAL
ROW PURCHASE:	\$ -		\$ -	\$ -	\$ -	\$ -	\$ -
CONSTRUCTION COST:	\$ -		\$ -	\$ -	\$ -	\$ -	\$ -
CONSTRUCTION ENGINEERING:	\$ -		TOTAL:	\$ -	\$ -	\$ -	\$ -
CONTINGENCIES:	\$ -						
INDIRECT COSTS:	\$ -						
BOND FINANCING:	\$ -						
OTHER FIELD:	\$ -						
TOTAL PROJEC COST:	\$ -						
DISTRICT	COUNTY	CSJ	HWY	PHASE	CITY	PROJECT SPONSOR	YOE COST
3 - Wichita						TxDOT	\$ -
LIMITS FROM:						REVISION DATE:	
LIMITS TO:						MPO PROJ NUM:	
PROJECT						FUNDING CAT(S):	
DESCRIPTION:						PROJECT HISTORY:	
REMARKS P7:							
TOTAL PROJECT COST INFORMATION			AUTHORIZED FUNDING BY CATEGORY/SHARE				
PRELIMINARY ENGINEERING:	\$ -	COST OF APPROVED PHASES:	FEDERAL	STATE	LOCAL	LC	TOTAL
ROW PURCHASE:	\$ -		\$ -	\$ -	\$ -	\$ -	\$ -
CONSTRUCTION COST:	\$ -		\$ -	\$ -	\$ -	\$ -	\$ -
CONSTRUCTION ENGINEERING:	\$ -		TOTAL:	\$ -	\$ -	\$ -	\$ -
CONTINGENCIES:	\$ -						
INDIRECT COSTS:	\$ -						
BOND FINANCING:	\$ -						
OTHER FIELD:	\$ -						
TOTAL PROJEC COST:	\$ -						

PHASE: C = CONSTRUCTION, E = ENGINEERING, R = ROW, T = TRANSFER

2011-2014 STATEWIDE TRANSPORTATION IMPROVEMENT PROGRAM
 WICHITA FALLS METROPOLITAN PLANNING ORGANIZATION
 FY 2013

Wednesday, November 03, 2010

PAGE: 1 of 1

DISTRICT	COUNTY	CSJ	HWY	PHASE	CITY	PROJECT SPONSOR	YOE COST	
3 - Wichita						TxDOT	\$ -	
LIMITS FROM:						REVISION DATE:		
LIMITS TO:						MPO PROJ NUM:		
PROJECT						FUNDING CAT(S):		
DESCRIPTION:						PROJECT HISTORY:		
REMARKS P7:								
TOTAL PROJECT COST INFORMATION			AUTHORIZED FUNDING BY CATEGORY/SHARE					
PRELIMINARY ENGINEERING:	\$ -		COST OF	FEDERAL	STATE	LOCAL	LC	TOTAL
ROW PURCHASE:	\$ -		APPROVED	\$ -	\$ -	\$ -	\$ -	\$ -
CONSTRUCTION COST:	\$ -		PHASES:	\$ -	\$ -	\$ -	\$ -	\$ -
CONSTRUCTION ENGINEERING:	\$ -	\$ -		TOTAL:	\$ -	\$ -	\$ -	\$ -
CONTINGENCIES:	\$ -							
INDIRECT COSTS:	\$ -							
BOND FINANCING:	\$ -							
OTHER FIELD:	\$ -							
TOTAL PROJEC COST:	\$ -							
DISTRICT	COUNTY	CSJ	HWY	PHASE	CITY	PROJECT SPONSOR	YOE COST	
3 - Wichita						TxDOT	\$ -	
LIMITS FROM:						REVISION DATE:		
LIMITS TO:						MPO PROJ NUM:		
PROJECT						FUNDING CAT(S):		
DESCRIPTION:						PROJECT HISTORY:		
REMARKS P7:								
TOTAL PROJECT COST INFORMATION			AUTHORIZED FUNDING BY CATEGORY/SHARE					
PRELIMINARY ENGINEERING:	\$ -		COST OF	FEDERAL	STATE	LOCAL	LC	TOTAL
ROW PURCHASE:	\$ -		APPROVED	\$ -	\$ -	\$ -	\$ -	\$ -
CONSTRUCTION COST:	\$ -		PHASES:	\$ -	\$ -	\$ -	\$ -	\$ -
CONSTRUCTION ENGINEERING:	\$ -	\$ -		TOTAL:	\$ -	\$ -	\$ -	\$ -
CONTINGENCIES:	\$ -							
INDIRECT COSTS:	\$ -							
BOND FINANCING:	\$ -							
OTHER FIELD:	\$ -							
TOTAL PROJEC COST:	\$ -							
DISTRICT	COUNTY	CSJ	HWY	PHASE	CITY	PROJECT SPONSOR	YOE COST	
3 - Wichita						TxDOT	\$ -	
LIMITS FROM:						REVISION DATE:		
LIMITS TO:						MPO PROJ NUM:		
PROJECT						FUNDING CAT(S):		
DESCRIPTION:						PROJECT HISTORY:		
REMARKS P7:								
TOTAL PROJECT COST INFORMATION			AUTHORIZED FUNDING BY CATEGORY/SHARE					
PRELIMINARY ENGINEERING:	\$ -		COST OF	FEDERAL	STATE	LOCAL	LC	TOTAL
ROW PURCHASE:	\$ -		APPROVED	\$ -	\$ -	\$ -	\$ -	\$ -
CONSTRUCTION COST:	\$ -		PHASES:	\$ -	\$ -	\$ -	\$ -	\$ -
CONSTRUCTION ENGINEERING:	\$ -	\$ -		TOTAL:	\$ -	\$ -	\$ -	\$ -
CONTINGENCIES:	\$ -							
INDIRECT COSTS:	\$ -							
BOND FINANCING:	\$ -							
OTHER FIELD:	\$ -							
TOTAL PROJEC COST:	\$ -							

PHASE: C = CONSTRUCTION, E = ENGINEERING, R = ROW, T = TRANSFER

2011-2014 STATEWIDE TRANSPORTATION IMPROVEMENT PROGRAM
 WICHITA FALLS METROPOLITAN PLANNING ORGANIZATION
 FY 2014

Wednesday, November 03, 2010

PAGE: 1 of 1

DISTRICT	COUNTY	CSJ	HWY	PHASE	CITY	PROJECT SPONSOR	YOE COST	
3 - Wichita						TxDOT	\$ -	
LIMITS FROM:						REVISION DATE:		
LIMITS TO:						MPO PROJ NUM:		
PROJECT						FUNDING CAT(S):		
DESCRIPTION:						PROJECT HISTORY:		
REMARKS P7:								
TOTAL PROJECT COST INFORMATION			AUTHORIZED FUNDING BY CATEGORY/SHARE					
PRELIMINARY ENGINEERING:	\$ -		COST OF	FEDERAL	STATE	LOCAL	LC	TOTAL
ROW PURCHASE:	\$ -		APPROVED	\$ -	\$ -	\$ -	\$ -	\$ -
CONSTRUCTION COST:	\$ -		PHASES:	\$ -	\$ -	\$ -	\$ -	\$ -
CONSTRUCTION ENGINEERING:	\$ -	\$ -		TOTAL:	\$ -	\$ -	\$ -	\$ -
CONTINGENCIES:	\$ -							
INDIRECT COSTS:	\$ -							
BOND FINANCING:	\$ -							
OTHER FIELD:	\$ -							
TOTAL PROJEC COST:	\$ -							
DISTRICT	COUNTY	CSJ	HWY	PHASE	CITY	PROJECT SPONSOR	YOE COST	
3 - Wichita						TxDOT	\$ -	
LIMITS FROM:						REVISION DATE:		
LIMITS TO:						MPO PROJ NUM:		
PROJECT						FUNDING CAT(S):		
DESCRIPTION:						PROJECT HISTORY:		
REMARKS P7:								
TOTAL PROJECT COST INFORMATION			AUTHORIZED FUNDING BY CATEGORY/SHARE					
PRELIMINARY ENGINEERING:	\$ -		COST OF	FEDERAL	STATE	LOCAL	LC	TOTAL
ROW PURCHASE:	\$ -		APPROVED	\$ -	\$ -	\$ -	\$ -	\$ -
CONSTRUCTION COST:	\$ -		PHASES:	\$ -	\$ -	\$ -	\$ -	\$ -
CONSTRUCTION ENGINEERING:	\$ -	\$ -		TOTAL:	\$ -	\$ -	\$ -	\$ -
CONTINGENCIES:	\$ -							
INDIRECT COSTS:	\$ -							
BOND FINANCING:	\$ -							
OTHER FIELD:	\$ -							
TOTAL PROJEC COST:	\$ -							
DISTRICT	COUNTY	CSJ	HWY	PHASE	CITY	PROJECT SPONSOR	YOE COST	
3 - Wichita						TxDOT	\$ -	
LIMITS FROM:						REVISION DATE:		
LIMITS TO:						MPO PROJ NUM:		
PROJECT						FUNDING CAT(S):		
DESCRIPTION:						PROJECT HISTORY:		
REMARKS P7:								
TOTAL PROJECT COST INFORMATION			AUTHORIZED FUNDING BY CATEGORY/SHARE					
PRELIMINARY ENGINEERING:	\$ -		COST OF	FEDERAL	STATE	LOCAL	LC	TOTAL
ROW PURCHASE:	\$ -		APPROVED	\$ -	\$ -	\$ -	\$ -	\$ -
CONSTRUCTION COST:	\$ -		PHASES:	\$ -	\$ -	\$ -	\$ -	\$ -
CONSTRUCTION ENGINEERING:	\$ -	\$ -		TOTAL:	\$ -	\$ -	\$ -	\$ -
CONTINGENCIES:	\$ -							
INDIRECT COSTS:	\$ -							
BOND FINANCING:	\$ -							
OTHER FIELD:	\$ -							
TOTAL PROJEC COST:	\$ -							

PHASE: C = CONSTRUCTION, E = ENGINEERING, R = ROW, T = TRANSFER

SECTION IV STATE FUNDED HIGHWAY PROJECTS

STATE FUNDED HIGHWAY PROJECTS include projects that do not receive Federal funds. These projects receive only State or Local funds.

The Wichita Falls FY 2011-2014 TIP does not contain any State funded highway projects.

**SECTION V
LOCALLY FUNDED
REGIONALLY SIGNIFICANT
PROJECTS**

2011-2014 Transportation Improvement Program Projects

LOCALLY FUNDED REGIONALLY SIGNIFICANT PROJECTS include projects that do not receive Federal or State funds. These projects only receive Local funds.

The Wichita Falls FY 2011-2014 TIP does not contain any locally funded regionally significant projects.

2011-2014 Transportation Improvement Program Projects

Wichita Falls Metropolitan Planning Organization Highway Financial Summary – Year of Expenditure Costs 2011-2014 TIP/STIP

Funding by Category

Category	Description	FY 2011		FY 2012		FY 2013		FY 2014		Total FY 2011 - 2014	
		Programmed	Authorized	Programmed	Authorized	Programmed	Authorized	Programmed	Authorized	Programmed	Authorized
1	Preventive Maintenance & Rehabilitation	\$0	\$0	\$0	\$0	\$0	\$0	\$0	\$0	\$0	\$0
2	Metropolitan Area (TMA) Corridor Projects	\$0	\$0	\$0	\$0	\$0	\$0	\$0	\$0	\$0	\$0
3	Urban Area (Non-TMA) Corridor Projects	\$0	\$0	\$0	\$0	\$0	\$0	\$0	\$0	\$0	\$0
4	Statewide Connectivity Corridor Projects	\$0	\$0	\$0	\$0	\$0	\$0	\$0	\$0	\$0	\$0
5	Congestion Mitigation & Air Quality (CMAQ) Improvement	\$0	\$0	\$0	\$0	\$0	\$0	\$0	\$0	\$0	\$0
6	Structures Replacement & Rehabilitation	\$0	\$0	\$0	\$0	\$0	\$0	\$0	\$0	\$0	\$0
7	STP Metropolitan Mobility & Rehabilitation	\$0	\$0	\$0	\$0	\$0	\$0	\$0	\$0	\$0	\$0
8	STP Safety	\$0	\$0	\$0	\$0	\$0	\$0	\$0	\$0	\$0	\$0
9	STP Transportation Enhancements	\$3,097,036	\$3,097,036	\$0	\$0	\$0	\$0	\$0	\$0	\$3,097,036	\$3,097,036
10	Supplemental & Miscellaneous Transportation Projects	\$0	\$0	\$0	\$0	\$0	\$0	\$0	\$0	\$0	\$0
11	District Discretionary	\$0	\$0	\$0	\$0	\$0	\$0	\$0	\$0	\$0	\$0
12	Strategic Priority	\$0	\$0	\$0	\$0	\$0	\$0	\$0	\$0	\$0	\$0
Other	Prop 12	\$0	\$0	\$0	\$0	\$0	\$0	\$0	\$0	\$0	\$0
Other	Prop 14	\$0	\$0	\$0	\$0	\$0	\$0	\$0	\$0	\$0	\$0
Other		\$0	\$0	\$0	\$0	\$0	\$0	\$0	\$0	\$0	\$0
LC	Local Contributions	\$0	\$0	\$0	\$0	\$0	\$0	\$0	\$0	\$0	\$0
Total		\$3,097,036	\$3,097,036	\$0	\$0	\$0	\$0	\$0	\$0	\$3,097,036	\$3,097,036

Funding Participation Source

Source	FY 2011	FY 2012	FY 2013	FY 2014	Total
Federal	\$2,477,629	\$0	\$0	\$0	\$2,477,629
State	\$0	\$0	\$0	\$0	\$0
Local Contributions	\$619,407	\$0	\$0	\$0	\$619,407
Prop 12	\$0	\$0	\$0	\$0	\$0
Prop 14	\$0	\$0	\$0	\$0	\$0
Other (Insert Entity Name)	\$0	\$0	\$0	\$0	\$0
Other (Insert Entity Name)	\$0	\$0	\$0	\$0	\$0
Total Programmed	\$3,097,036	\$0	\$0	\$0	\$3,097,036

**SECTION VI
FEDERALLY FUNDED
TRANSIT PROJECTS**

2011-2014 Transportation Improvement Program Projects

FY 2011 TRANSIT PROJECT LIST - SECTION 5307			
WICHITA FALLS MPO TRANSPORTATION IMPROVEMENT PROGRAM			
Wichita Falls		YOE = Year of Expenditure	
General Project Information		Funding Information (YOE)	
Project Sponsor:	WICHITA FALLS TRANSIT SYSTEM	Federal Funding Category	5307
MPO Project Information: (reference number, etc.)	TX-90-X917	Federal (FTA) Funds	\$601,576
Apportionment Year:	FY 2010	State Funds from TxDOT	\$0
Project Phase:	CONSTRUCTION	Other Funds	\$150,394
Brief Project Description: Capital Expenditures - construction of downtown transit center		Fiscal Year Cost	\$751,970
		Total Project Cost	\$5,000,000
		Trans. Dev. Credits Requested	
Sec 5309 ID Number	N/A	Trans. Dev. Credits Awarded (Date & Amount)	
Amendment Date & Action: November 3, 2010 - Revised to show actual grant amounts.			
General Project Information		Funding Information (YOE)	
Project Sponsor:	WICHITA FALLS TRANSIT SYSTEM	Federal Funding Category	5307
MPO Project Information: (reference number, etc.)	TX-90-X917	Federal (FTA) Funds	\$380,000
Apportionment Year:	FY 2010	State Funds from TxDOT	\$0
Project Phase:	PREVENTIVE MAINTENANCE	Other Funds	\$95,000
Brief Project Description: Preventive Maintenance		Fiscal Year Cost	\$475,000
		Total Project Cost	\$475,000
		Trans. Dev. Credits Requested	
Sec 5309 ID Number	N/A	Trans. Dev. Credits Awarded (Date & Amount)	
Amendment Date & Action: November 3, 2010 - Revised to show actual grant amounts.			
General Project Information		Funding Information (YOE)	
Project Sponsor:	WICHITA FALLS TRANSIT SYSTEM	Federal Funding Category	5307
MPO Project Information: (reference number, etc.)	TX-90-X917	Federal (FTA) Funds	\$345,000
Apportionment Year:	FY 2010	State Funds from TxDOT	\$302,699
Project Phase:	OPERATING ASSISTANCE	Other Funds	\$312,301
Brief Project Description: Operating Expenditures		Fiscal Year Cost	\$960,000
		Total Project Cost	\$960,000
		Trans. Dev. Credits Requested	
Sec 5309 ID Number	N/A	Trans. Dev. Credits Awarded (Date & Amount)	
Amendment Date & Action: November 3, 2010 - Revised to show actual grant amounts.			
General Project Information		Funding Information (YOE)	
Project Sponsor:	WICHITA FALLS TRANSIT SYSTEM	Federal Funding Category	5307
MPO Project Information: (reference number, etc.)	TX-90-X917	Federal (FTA) Funds	\$44,000
Apportionment Year:	FY 2010	State Funds from TxDOT	\$0
Project Phase:	PLANNING	Other Funds	\$11,000
Brief Project Description: Planning Expenditures - Grant Administration, Annual Software Maintenance, & Transit Studies		Fiscal Year Cost	\$55,000
		Total Project Cost	\$55,000
		Trans. Dev. Credits Requested	
Sec 5309 ID Number	N/A	Trans. Dev. Credits Awarded (Date & Amount)	
Amendment Date & Action: November 3, 2010 - Revised to show actual grant amounts.			
FY (TIP) 2011 - MPO PROJECT TOTALS			\$2,241,970

2011-2014 Transportation Improvement Program Projects

FY 2011 TRANSIT PROJECT LIST - SECTION 5307			
WICHITA FALLS MPO TRANSPORTATION IMPROVEMENT PROGRAM			
Wichita Falls			YOE = Year of Expenditure
General Project Information		Funding Information (YOE)	
Project Sponsor:	WICHITA FALLS TRANSIT SYSTEM	Federal Funding Category	5307
MPO Project Information: (reference number, etc.)	D2010-BUSP-110	Federal (FTA) Funds	\$592,000
Apportionment Year:	FY 2011	State Funds from TxDOT	\$0
Project Phase:	CAPITAL	Other Funds	\$148,000
Brief Project Description: Capital Expenditure- purchase two replacement buses.		Fiscal Year Cost	\$740,000
		Total Project Cost	\$740,000
		Trans. Dev. Credits Requested	
Sec 5309 ID Number	N/A	Trans. Dev. Credits Awarded (Date & Amount)	
Amendment Date & Action: April, 20 2011 - Revised to show actual grant amounts.			
General Project Information		Funding Information (YOE)	
Project Sponsor:	WICHITA FALLS TRANSIT SYSTEM	Federal Funding Category	5307
MPO Project Information: (reference number, etc.)	D2010-BUSP-110	Federal (FTA) Funds	\$0
Apportionment Year:	FY 2011	State Funds from TxDOT	\$0
Project Phase:	PREVENTIVE MAINTENANCE	Other Funds	\$0
Brief Project Description: Preventive Maintenance		Fiscal Year Cost	\$0
		Total Project Cost	\$0
		Trans. Dev. Credits Requested	
Sec 5309 ID Number	N/A	Trans. Dev. Credits Awarded (Date & Amount)	
Amendment Date & Action: April 20, 2011 - Revised to show actual grant amounts.			
General Project Information		Funding Information (YOE)	
Project Sponsor:	WICHITA FALLS TRANSIT SYSTEM	Federal Funding Category	5307
MPO Project Information: (reference number, etc.)	D2010-BUSP-110	Federal (FTA) Funds	\$0
Apportionment Year:	FY 2011	State Funds from TxDOT	\$0
Project Phase:	OPERATING ASSISTANCE	Other Funds	\$0
Brief Project Description: Operating Expenditures		Fiscal Year Cost	\$0
		Total Project Cost	\$0
		Trans. Dev. Credits Requested	
Sec 5309 ID Number	N/A	Trans. Dev. Credits Awarded (Date & Amount)	
Amendment Date & Action: April 20, 2011 - Revised to show actual grant amounts.			
General Project Information		Funding Information (YOE)	
Project Sponsor:	WICHITA FALLS TRANSIT SYSTEM	Federal Funding Category	5307
MPO Project Information: (reference number, etc.)	D2010-BUSP-110	Federal (FTA) Funds	\$0
Apportionment Year:	FY 2011	State Funds from TxDOT	\$0
Project Phase:	PLANNING	Other Funds	\$0
Brief Project Description: Planning Expenditures - Grant Administration, Annual Software Maintenance, & Transit Studies		Fiscal Year Cost	\$0
		Total Project Cost	\$0
		Trans. Dev. Credits Requested	
Sec 5309 ID Number	N/A	Trans. Dev. Credits Awarded (Date & Amount)	
Amendment Date & Action: April 20, 2011 - Revised to show actual grant amounts.			
FY (TIP) 2011 - MPO PROJECT TOTALS			\$740,000

2011-2014 Transportation Improvement Program Projects

FY 2011 TRANSIT PROJECT LIST - SECTION 5307			
WICHITA FALLS MPO TRANSPORTATION IMPROVEMENT PROGRAM			
Wichita Falls			YOE = Year of Expenditure
General Project Information		Funding Information (YOE)	
Project Sponsor:	WICHITA FALLS TRANSIT SYSTEM	Federal Funding Category	5307
MPO Project Information (reference number,etc)	TI-01WF(A)	Federal (FTA) Funds	\$544,040
Apportionment Year:	FY 2011	State Funds from TxDOT	\$0
Project Phase:	CAPITAL	Other Funds	\$136,010
Brief Project Description:	Capital Expenditures - purchase replacement buses, shop tools and equipment.	Fiscal Year Cost	\$680,050
		Total Project Cost	\$680,050
		Trans. Dev. Credits Requested	
Sec 5309 ID Number:	N/A	Trans. Dev. Credits Awarded (Date & Amount)	
Amendment Date & Action:			
General Project Information		Funding Information (YOE)	
Project Sponsor:	WICHITA FALLS TRANSIT SYSTEM	Federal Funding Category	5307
MPO Project Information (reference number,etc)	TI-01WF(A)	Federal (FTA) Funds	\$385,700
Apportionment Year:	FY 2011	State Funds from TxDOT	\$0
Project Phase:	PREVENTIVE MAINTENANCE	Other Funds	\$96,425
Brief Project Description:	Preventive Maintenance	Fiscal Year Cost	\$482,125
		Total Project Cost	\$482,125
		Trans. Dev. Credits Requested	
Sec 5309 ID Number:	N/A	Trans. Dev. Credits Awarded (Date & Amount)	
Amendment Date & Action:			
General Project Information		Funding Information (YOE)	
Project Sponsor:	WICHITA FALLS TRANSIT SYSTEM	Federal Funding Category	5307
MPO Project Information (reference number,etc)	TI-01WF(A)	Federal (FTA) Funds	\$350,175
Apportionment Year:	FY 2011	State Funds from TxDOT	\$307,239
Project Phase:	OPERATING ASSISTANCE	Other Funds	\$316,986
Brief Project Description:	Operating Expenditures	Fiscal Year Cost	\$974,400
		Total Project Cost	\$974,400
		Trans. Dev. Credits Requested	
Sec 5309 ID Number:	N/A	Trans. Dev. Credits Awarded (Date & Amount)	
Amendment Date & Action:			
General Project Information		Funding Information (YOE)	
Project Sponsor:	WICHITA FALLS TRANSIT SYSTEM	Federal Funding Category	5307
MPO Project Information (reference number,etc)	TI-01WF(A)	Federal (FTA) Funds	\$44,000
Apportionment Year:	FY 2011	State Funds from TxDOT	\$0
Project Phase:	PLANNING	Other Funds	\$11,000
Brief Project Description:	Planning Expenditures - Grant Administration, Annual Software Maintenance, & Transit Studies	Fiscal Year Cost	\$55,000
		Total Project Cost	\$55,000
		Trans. Dev. Credits Requested	
Sec 5309 ID Number:	N/A	Trans. Dev. Credits Awarded (Date & Amount)	
Amendment Date & Action:			
FY (TIP) 2011 - MPO PROJECT TOTALS			\$2,191,575

2011-2014 Transportation Improvement Program Projects

FY 2012 TRANSIT PROJECT LIST - SECTION 5307			
WICHITA FALLS MPO TRANSPORTATION IMPROVEMENT PROGRAM			
Wichita Falls			YOE = Year of Expenditure
General Project Information		Funding Information (YOE)	
Project Sponsor:	WICHITA FALLS TRANSIT SYSTEM	Federal Funding Category	5307
MPO Project Information (reference number,etc)	TI-01WF(B)	Federal (FTA) Funds	\$545,539
Apportionment Year:	FY 2012	State Funds from TxDOT	\$0
Project Phase:	CAPITAL	Other Funds	\$136,385
Brief Project Description:	Capital Expenditures - purchase replacement buses, shop tools and equipment.	Fiscal Year Cost	\$681,924
		Total Project Cost	\$681,924
		Trans. Dev. Credits Requested	
Sec 5309 ID Number:	N/A	Trans. Dev. Credits Awarded (Date & Amount)	
Amendment Date & Action:			
General Project Information		Funding Information (YOE)	
Project Sponsor:	WICHITA FALLS TRANSIT SYSTEM	Federal Funding Category	5307
MPO Project Information (reference number,etc)	TI-01WF(B)	Federal (FTA) Funds	\$391,486
Apportionment Year:	FY 2012	State Funds from TxDOT	\$0
Project Phase:	PREVENTIVE MAINTENANCE	Other Funds	\$97,871
Brief Project Description:	Preventive Maintenance	Fiscal Year Cost	\$489,357
		Total Project Cost	\$489,357
		Trans. Dev. Credits Requested	
Sec 5309 ID Number:	N/A	Trans. Dev. Credits Awarded (Date & Amount)	
Amendment Date & Action:			
General Project Information		Funding Information (YOE)	
Project Sponsor:	WICHITA FALLS TRANSIT SYSTEM	Federal Funding Category	5307
MPO Project Information (reference number,etc)	TI-01WF(B)	Federal (FTA) Funds	\$355,428
Apportionment Year:	FY 2012	State Funds from TxDOT	\$311,848
Project Phase:	OPERATING ASSISTANCE	Other Funds	\$321,741
Brief Project Description:	Operating Expenditures	Fiscal Year Cost	\$989,016
		Total Project Cost	\$989,016
		Trans. Dev. Credits Requested	
Sec 5309 ID Number:	N/A	Trans. Dev. Credits Awarded (Date & Amount)	
Amendment Date & Action:			
General Project Information		Funding Information (YOE)	
Project Sponsor:	WICHITA FALLS TRANSIT SYSTEM	Federal Funding Category	5307
MPO Project Information (reference number,etc)	TI-01WF(B)	Federal (FTA) Funds	\$44,000
Apportionment Year:	FY 2012	State Funds from TxDOT	\$0
Project Phase:	PLANNING	Other Funds	\$11,000
Brief Project Description:	Planning Expenditures - Grant Administration, Annual Software Maintenance, & Transit Studies	Fiscal Year Cost	\$55,000
		Total Project Cost	\$55,000
		Trans. Dev. Credits Requested	
Sec 5309 ID Number:	N/A	Trans. Dev. Credits Awarded (Date & Amount)	
Amendment Date & Action:			
FY (TIP) 2012 - MPO PROJECT TOTALS			\$2,215,297

2011-2014 Transportation Improvement Program Projects

FY 2013 TRANSIT PROJECT LIST - SECTION 5307			
WICHITA FALLS MPO TRANSPORTATION IMPROVEMENT PROGRAM			
Wichita Falls			YOE = Year of Expenditure
General Project Information		Funding Information (YOE)	
Project Sponsor:	WICHITA FALLS TRANSIT SYSTEM	Federal Funding Category	5307
MPO Project Information (reference number, etc)	TI-01WF(C)	Federal (FTA) Funds	\$552,201
Apportionment Year:	FY 2013	State Funds from TxDOT	\$0
Project Phase:	CAPITAL	Other Funds	\$138,050
Brief Project Description:	Capital Expenditures - purchase shop tools and equipment. Purchase bus shelters and benches.	Fiscal Year Cost	\$690,251
		Total Project Cost	\$690,251
		Trans. Dev. Credits Requested	
Sec 5309 ID Number:	N/A	Trans. Dev. Credits Awarded (Date & Amount)	
Amendment Date & Action:			
General Project Information		Funding Information (YOE)	
Project Sponsor:	WICHITA FALLS TRANSIT SYSTEM	Federal Funding Category	5307
MPO Project Information (reference number, etc)	TI-01WF(C)	Federal (FTA) Funds	\$397,358
Apportionment Year:	FY 2013	State Funds from TxDOT	\$0
Project Phase:	PREVENTIVE MAINTENANCE	Other Funds	\$99,339
Brief Project Description:	Preventive Maintenance	Fiscal Year Cost	\$496,697
		Total Project Cost	\$496,697
		Trans. Dev. Credits Requested	
Sec 5309 ID Number:	N/A	Trans. Dev. Credits Awarded (Date & Amount)	
Amendment Date & Action:			
General Project Information		Funding Information (YOE)	
Project Sponsor:	WICHITA FALLS TRANSIT SYSTEM	Federal Funding Category	5307
MPO Project Information (reference number, etc)	TI-01WF(C)	Federal (FTA) Funds	\$360,759
Apportionment Year:	FY 2013	State Funds from TxDOT	\$316,526
Project Phase:	OPERATING ASSISTANCE	Other Funds	\$326,567
Brief Project Description:	Operating Expenditures	Fiscal Year Cost	\$1,003,852
		Total Project Cost	\$1,003,852
		Trans. Dev. Credits Requested	
Sec 5309 ID Number:	N/A	Trans. Dev. Credits Awarded (Date & Amount)	
Amendment Date & Action:			
General Project Information		Funding Information (YOE)	
Project Sponsor:	WICHITA FALLS TRANSIT SYSTEM	Federal Funding Category	5307
MPO Project Information (reference number, etc)	TI-01WF(C)	Federal (FTA) Funds	\$44,000
Apportionment Year:	FY 2013	State Funds from TxDOT	\$0
Project Phase:	PLANNING	Other Funds	\$11,000
Brief Project Description:	Planning Expenditures - Grant Administration, Annual Software Maintenance, & Transit Studies	Fiscal Year Cost	\$55,000
		Total Project Cost	\$55,000
		Trans. Dev. Credits Requested	
Sec 5309 ID Number:	N/A	Trans. Dev. Credits Awarded (Date & Amount)	
Amendment Date & Action:			
FY (TIP) 2013 - MPO PROJECT TOTALS			\$2,245,800

2011-2014 Transportation Improvement Program Projects

FY 2014 TRANSIT PROJECT LIST - SECTION 5307			
WICHITA FALLS MPO TRANSPORTATION IMPROVEMENT PROGRAM			
Wichita Falls			YOE = Year of Expenditure
General Project Information		Funding Information (YOE)	
Project Sponsor:	WICHITA FALLS TRANSIT SYSTEM	Federal Funding Category	5307
MPO Project Information (reference number, etc)	TI-01WF(D)	Federal (FTA) Funds	\$563,358
Apportionment Year:	FY 2014	State Funds from TxDOT	\$0
Project Phase:	CAPITAL	Other Funds	\$140,839
Brief Project Description:	Capital Expenditures - Purchase replacement buses, shop tools and equipment.	Fiscal Year Cost	\$704,197
		Total Project Cost	\$704,197
		Trans. Dev. Credits Requested	
Sec 5309 ID Number:	N/A	Trans. Dev. Credits Awarded (Date & Amount)	
Amendment Date & Action:			
General Project Information		Funding Information (YOE)	
Project Sponsor:	WICHITA FALLS TRANSIT SYSTEM	Federal Funding Category	5307
MPO Project Information (reference number, etc)	TI-01WF(D)	Federal (FTA) Funds	\$403,318
Apportionment Year:	FY 2014	State Funds from TxDOT	\$0
Project Phase:	PREVENTIVE MAINTENANCE	Other Funds	\$100,829
Brief Project Description:	Preventive Maintenance	Fiscal Year Cost	\$504,147
		Total Project Cost	\$504,147
		Trans. Dev. Credits Requested	
Sec 5309 ID Number:	N/A	Trans. Dev. Credits Awarded (Date & Amount)	
Amendment Date & Action:			
General Project Information		Funding Information (YOE)	
Project Sponsor:	WICHITA FALLS TRANSIT SYSTEM	Federal Funding Category	5307
MPO Project Information (reference number, etc)	TI-01WF(D)	Federal (FTA) Funds	\$366,170
Apportionment Year:	FY 2014	State Funds from TxDOT	\$321,274
Project Phase:	OPERATING ASSISTANCE	Other Funds	\$331,466
Brief Project Description:	Operating Expenditures	Fiscal Year Cost	\$1,018,910
		Total Project Cost	\$1,018,910
		Trans. Dev. Credits Requested	
Sec 5309 ID Number:	N/A	Trans. Dev. Credits Awarded (Date & Amount)	
Amendment Date & Action:			
General Project Information		Funding Information (YOE)	
Project Sponsor:	WICHITA FALLS TRANSIT SYSTEM	Federal Funding Category	5307
MPO Project Information (reference number, etc)	TI-01WF(D)	Federal (FTA) Funds	\$44,000
Apportionment Year:	FY 2014	State Funds from TxDOT	\$0
Project Phase:	PLANNING	Other Funds	\$11,000
Brief Project Description:	Planning Expenditures - Grant Administration, Annual Software Maintenance, & Transit Studies	Fiscal Year Cost	\$55,000
		Total Project Cost	\$55,000
		Trans. Dev. Credits Requested	
Sec 5309 ID Number:	N/A	Trans. Dev. Credits Awarded (Date & Amount)	
Amendment Date & Action:			
FY (TIP) 2014 - MPO PROJECT TOTALS			\$2,282,254

SECTION VII – TRANSIT FINANCIAL SUMMARY

Transit Financial Summary Wichita Falls MPO / District FY 2011 - 2014 Transportation Improvement Program										
All Figures in Year of Expenditure (YOE) Dollars										Current as of November 3, 2010
Transit Program	FY 2011			FY 2012			FY 2013			
	Federal	State/Local	Total	Federal	State/Local	Total	Federal	State/Local	Total	
1 Sec. 5307 - Urbanized Formula >200K			0			0			0	
2 Sec. 5307 - Urbanized Formula <200K	3,286,491	1,887,054	5,173,545	1,336,453	878,845	2,215,298	1,354,318	891,482	2,245,800	
3 Sec. 5309 - Discretionary			0			0			0	
4 Sec. 5310 - Elderly & Individuals w/Disabilities			0			0			0	
5 Sec. 5311 - Nonurbanized Formula			0			0			0	
6 Sec. 5316 - JARC >200K			0			0			0	
7 Sec. 5316 - JARC <200K			0			0			0	
8 Sec. 5316 - JARC Nonurbanized			0			0			0	
9 Sec. 5317 - New Freedom >200K			0			0			0	
10 Sec. 5317 - New Freedom <200K			0			0			0	
11 Sec. 5317 - New Freedom Nonurbanized			0			0			0	
12 Other FTA (2009 ARRA Funds)			0			0			0	
13 Regionally Significant or Other (incl FHWA transfers)			0			0			0	
Total Funds	\$3,286,491	\$1,887,054	\$5,173,545	\$1,336,453	\$878,845	\$2,215,298	\$1,354,318	\$891,482	\$2,245,800	
Transportation Development Credits										
Requested			\$0			0			0	
Awarded			\$0			0			0	
All Figures in Year of Expenditure (YOE) Dollars										
Transit Program	FY 2014			Total						
	Federal	State/Local	Total	Federal	State/Local	Total				
1 Sec. 5307 - Urbanized Formula >200K			0	0	0	0				
2 Sec. 5307 - Urbanized Formula <200K	1,376,846	905,408	2,282,254	7,354,108	4,562,789	11,916,897				
3 Sec. 5309 - Discretionary			0	0	0	0				
4 Sec. 5310 - Elderly & Individuals w/Disabilities			0	0	0	0				
5 Sec. 5311 - Nonurbanized Formula			0	0	0	0				
6 Sec. 5316 - JARC >200K			0	0	0	0				
7 Sec. 5316 - JARC <200K			0	0	0	0				
8 Sec. 5316 - JARC Nonurbanized			0	0	0	0				
9 Sec. 5317 - New Freedom >200K			0	0	0	0				
10 Sec. 5317 - New Freedom <200K			0	0	0	0				
11 Sec. 5317 - New Freedom Nonurbanized			0	0	0	0				
12 Other FTA (2009 ARRA funds)			0	0	0	0				
13 Regionally Significant or Other (incl FHWA transfers)			0	0	0	0				
Total Funds	\$1,376,846	\$905,408	\$2,282,254	\$7,354,108	\$4,562,789	\$11,916,897				
Transportation Development Credits										
Requested			\$0			\$0				
Awarded			\$0			\$0				

YOE Total Project Cost Methodology:

- WFMPO accomplished calculations for 2011-2014 Year of Expenditure costs by utilizing actual costs from FY 2010 in all four major project areas: Capital, Preventive Maintenance, Operating Assistance, and Planning.
- WFMPO based all Capital-programming costs on information provided by the City of Wichita Falls' Purchasing Department. This includes the projected estimated cost of new replacement buses, shop equipment, and tools.
- WFMPO calculated Capital, Preventive Maintenance, Operating Assistance, and Planning programming costs for each YOE by utilizing FY 2010 as the base year then multiplying by 1.5% per year to increase YOE incrementally. WFMPO used the 2010 state allocation of \$302,699 as the base year for 2011-2014 state estimates.
- NOTE: The City of Wichita Falls generally purchases replacement buses two at a time every other year. 2011 and 2013 are the target years for bus purchases.

**SECTION VIII
ANNUAL MPO
SELF-CERTIFICATION**

MPO SELF-CERTIFICATION FOR ATTAINMENT AREAS

In accordance with 23 CFR Part 450.334 and 450.220 of the Safe, Accountable, Flexible, Efficient Transportation Equity Act: A Legacy for Users, the Texas Department of Transportation, and the Wichita Falls Metropolitan Planning Organization for the Wichita Falls urbanized area(s) hereby certify that the transportation planning process is addressing the major issues in the metropolitan planning area and is being conducted in accordance with all applicable requirements of:

- (1) 23 U.S.C. 134, 49 U.S.C. 5303, and this subpart;
- (2) Title VI of the Civil Rights Act of 1964, as amended (42 U.S.C. 2000d-1) and 49 CFR part 21;
- (3) 49 U.S.C. 5332, prohibiting discrimination on the basis of race, color, creed, national origin, sex, or age in employment or business opportunity;
- (4) Section 1101(b) of the SAFETEA-LU (Pub. L. 109-59) and 49 CFR part 26 regarding the involvement of disadvantaged business enterprises in USDOT funded projects;
- (5) 23 CFR part 230, regarding the implementation of an equal employment opportunity program on Federal and Federal-aid highway construction contracts;
- (6) The provisions of the Americans with Disabilities Act of 1990 (42 U.S.C. 12101 et seq.) and 49 CFR parts 27, 37, and 38;
- (7) The Older Americans Act, as amended (42 U.S.C. 6101), prohibiting discrimination on the basis of age in programs or activities receiving Federal financial assistance;
- (8) Section 324 of title 23 U.S.C. regarding the prohibition of discrimination based on gender; and
- (9) Section 504 of the Rehabilitation Act of 1973 (29 U.S.C. 794) and 49 CFR part 27 regarding discrimination against individuals with disabilities.

Wichita Falls
District
Texas Department of Transportation

District Engineer

Date

Wichita Falls
Metropolitan Planning Organization
Policy Board Chairperson

Chairperson

Date

APPENDIX A

STATEWIDE GROUPED CSJ HIGHWAY PROJECTS

For informational purposes only: listed on the next few pages are the candidate projects for statewide grouping, which may be completed in the Wichita Falls Metropolitan Area during the fiscal years of 2011, 2012, 2013 & 2014. Grouping projects by these categories provides an efficient and streamlined method of programming and implementing these projects. If additional funding becomes available later, the funds can be advanced into these or additional projects. These are the known projects at the time the Policy Board approved this document. These projects are financially constrained at the state level and funded from federal and state sources.

Refer to the [Section II Glossary, Part B Grouped Project CSJ Definition, and Funding](#) legend of this document for explanatory information related to the following projects.

2011-2014 STATEWIDE TRANSPORTATION IMPROVEMENT PROGRAM

Wednesday, November 03, 2010

WICHITA FALLS METROPOLITAN PLANNING ORGANIZATION

PAGE: 1 of 2

FY 2011

DISTRICT	COUNTY	CSJ	HWY	PHASE	CITY	PROJECT SPONSOR	YOE COST	
3 - Wichita Falls	Wichita	0283-01-929	FM2380	C	Wichita Falls	TxDOT	\$ 38,028	
LIMITS FROM:	FM369					REVISION DATE: Jul-10		
LIMITS TO:	Archer County Line					MPO PROJ NUM: N/A		
PROJECT	Seal Coat					FUNDING CAT(S): 1		
DESCRIPTION:						PROJECT HISTORY: Contract CSJ 0043-07-927		
REMARKS P7:								
TOTAL PROJECT COST INFORMATION		AUTHORIZED FUNDING BY CATEGORY/SHARE						
PRELIMINARY ENGINEERING:	\$ 1,863.00	COST OF APPROVED PHASES:	FEDERAL	STATE	LOCAL	LC	TOTAL	
ROW PURCHASE:	\$ -		1 - PRVNT	\$ 30,422	\$ 7,606	\$ -	\$ -	\$ 38,028
CONSTRUCTION COST:	\$ 38,028.00			\$ -	\$ -	\$ -	\$ -	\$ -
CONSTRUCTION ENGINEERING:	\$ 1,901.00		TOTAL:	\$ 30,422	\$ 7,606	\$ -	\$ -	\$ 38,028
CONTINGENCIES:	\$ 2,472.00							
INDIRECT COSTS:	\$ 2,898.00							
BOND FINANCING:	\$ -							
OTHER FIELD:	\$ -							
TOTAL PROJEC COST:	\$ 47,162.00							
3 - Wichita Falls	Wichita	2582-01-931	FM890	C	Wichita Falls	TxDOT	\$ 14,482	
LIMITS FROM:	Armstrong Drive					REVISION DATE: Jul-10		
LIMITS TO:	FM171					MPO PROJ NUM: N/A		
PROJECT	Seal Coat					FUNDING CAT(S): 1		
DESCRIPTION:						PROJECT HISTORY: Contract CSJ 0043-07-927		
REMARKS P7:								
TOTAL PROJECT COST INFORMATION		AUTHORIZED FUNDING BY CATEGORY/SHARE						
PRELIMINARY ENGINEERING:	\$ 710.00	COST OF APPROVED PHASES:	FEDERAL	STATE	LOCAL	LC	TOTAL	
ROW PURCHASE:	\$ -		1 - PRVNT	\$ 11,586	\$ 2,896	\$ -	\$ -	\$ 14,482
CONSTRUCTION COST:	\$ 14,482.00			\$ -	\$ -	\$ -	\$ -	\$ -
CONSTRUCTION ENGINEERING:	\$ 724.00		TOTAL:	\$ 11,586	\$ 2,896	\$ -	\$ -	\$ 14,482
CONTINGENCIES:	\$ 941.00							
INDIRECT COSTS:	\$ 1,104.00							
BOND FINANCING:	\$ -							
OTHER FIELD:	\$ -							
TOTAL PROJEC COST:	\$ 17,961.00							
3 - Wichita Falls	Wichita	0685-01-932	SP325	C	Wichita Falls	TxDOT	\$ 36,549	
LIMITS FROM:	SH 240					REVISION DATE: Jul-10		
LIMITS TO:	FM890 (Frontage Roads)					MPO PROJ NUM:		
PROJECT	Seal Coat					FUNDING CAT(S): 1		
DESCRIPTION:						PROJECT HISTORY: Contract CSJ 0043-07-927		
REMARKS P7:								
TOTAL PROJECT COST INFORMATION		AUTHORIZED FUNDING BY CATEGORY/SHARE						
PRELIMINARY ENGINEERING:	\$ 1,791.00	COST OF APPROVED PHASES:	FEDERAL	STATE	LOCAL	LC	TOTAL	
ROW PURCHASE:	\$ -		1 - PRVNT	\$ 29,239	\$ 7,310	\$ -	\$ -	\$ 36,549
CONSTRUCTION COST:	\$ 36,549.00			\$ -	\$ -	\$ -	\$ -	\$ -
CONSTRUCTION ENGINEERING:	\$ 1,827.00		TOTAL:	\$ 29,239	\$ 7,310	\$ -	\$ -	\$ 36,549
CONTINGENCIES:	\$ 2,376.00							
INDIRECT COSTS:	\$ 2,785.00							
BOND FINANCING:	\$ -							
OTHER FIELD:	\$ -							
TOTAL PROJEC COST:	\$ 45,328.00							

PHASE: C = CONSTRUCTION, E = ENGINEERING, R = ROW, T = TRANSFER FUNDING NOT FIXED FOR ANY PROJECTS IN THIS LIST

2011-2014 STATEWIDE TRANSPORTATION IMPROVEMENT PROGRAM
WICHITA FALLS METROPOLITAN PLANNING ORGANIZATION
FY 2011

Wednesday, November 03, 2010

PAGE: 2 of 2

DISTRICT	COUNTY	CSJ	HWY	PHASE	CITY	PROJECT SPONSOR	YOE COST	
3 - Wichita Falls	Wichita	0044-01-092	US 82	C	Wichita Falls	TxDOT	\$ 2,059,200	
LIMITS FROM:	McKinney Road					REVISION DATE:	Jul-10	
LIMITS TO:	Clay County Line					MPO PROJ NUM:	N/A	
PROJECT	Mill and level with overlay					FUNDING CAT(S):	1	
DESCRIPTION:	Rehabilitation of existing roadway					PROJECT HISTORY:	Contract CSJ 0044-01-092; Ancestor CSJ 0044-01-982	
REMARKS P7:								
TOTAL PROJECT COST INFORMATION			AUTHORIZED FUNDING BY CATEGORY/SHARE					
PRELIMINARY ENGINEERING:	\$ 100,901.00	COST OF APPROVED PHASES:	FEDERAL	STATE	LOCAL	LC	TOTAL	
ROW PURCHASE:	\$ -		1 - PRVNT	\$ 1,647,360	\$ 411,840	\$ -	\$ -	\$ 2,059,200
CONSTRUCTION COST:	\$ 2,059,200.00			\$ -	\$ -	\$ -	\$ -	\$ -
CONSTRUCTION ENGINEERING:	\$ 102,960.00		TOTAL:	\$ 1,647,360	\$ 411,840	\$ -	\$ -	\$ 2,059,200
CONTINGENCIES:	\$ 133,848.00							
INDIRECT COSTS:	\$ 156,911.00							
BOND FINANCING:	\$ -							
OTHER FIELD:	\$ -							
TOTAL PROJEC COST:	\$ 2,553,820.00							
3 - Wichita Falls	Wichita	0903-03-094	City Streets (CS)	C	Wichita Falls	TxDOT	\$ 226,720	
LIMITS FROM:	On Maplewood Ave. from Midwestern Pkwy.					REVISION DATE:	Jul-10	
LIMITS TO:	Kemp Blvd.					MPO PROJ NUM:	SF-12TX	
PROJECT	Safety treat fixed objects (breakaway light poles) - HES					FUNDING CAT(S):	8	
DESCRIPTION:	Miscellaneous construction					PROJECT HISTORY:	Contract CSJ 0903-03-094; Ancestor CSJ 0903-03-936	
REMARKS P7:								
TOTAL PROJECT COST INFORMATION			AUTHORIZED FUNDING BY CATEGORY/SHARE					
PRELIMINARY ENGINEERING:	\$ 11,109.00	COST OF APPROVED PHASES:	FEDERAL	STATE	LOCAL	LC	TOTAL	
ROW PURCHASE:	\$ -		8 - SAFETY	\$ 204,048	\$ -	\$ 22,672	\$ -	\$ 226,720
CONSTRUCTION COST:	\$ 226,720.00			\$ -	\$ -	\$ -	\$ -	\$ -
CONSTRUCTION ENGINEERING:	\$ 17,004.00		TOTAL:	\$ 204,048	\$ -	\$ 22,672	\$ -	\$ 226,720
CONTINGENCIES:	\$ 15,870.00							
INDIRECT COSTS:	\$ 17,276.00							
BOND FINANCING:	\$ -							
OTHER FIELD:	\$ -							
TOTAL PROJEC COST:	\$ 287,979.00							
3 - Wichita Falls	Wichita				Wichita Falls	TxDOT	\$ -	
LIMITS FROM:						REVISION DATE:		
LIMITS TO:						MPO PROJ NUM:		
PROJECT						FUNDING CAT(S):		
DESCRIPTION:						PROJECT HISTORY:		
REMARKS P7:								
TOTAL PROJECT COST INFORMATION			AUTHORIZED FUNDING BY CATEGORY/SHARE					
PRELIMINARY ENGINEERING:	\$ -	COST OF APPROVED PHASES:	FEDERAL	STATE	LOCAL	LC	TOTAL	
ROW PURCHASE:	\$ -			\$ -	\$ -	\$ -	\$ -	\$ -
CONSTRUCTION COST:	\$ -			\$ -	\$ -	\$ -	\$ -	\$ -
CONSTRUCTION ENGINEERING:	\$ -		TOTAL:	\$ -	\$ -	\$ -	\$ -	\$ -
CONTINGENCIES:	\$ -							
INDIRECT COSTS:	\$ -							
BOND FINANCING:	\$ -							
OTHER FIELD:	\$ -							
TOTAL PROJEC COST:	\$ -							

PHASE: C = CONSTRUCTION, E = ENGINEERING, R = ROW, T = TRANSFER

FUNDING NOT FIXED FOR ANY PROJECTS IN THIS LIST

**2011-2014 STATEWIDE TRANSPORTATION IMPROVEMENT PROGRAM
WICHITA FALLS METROPOLITAN PLANNING ORGANIZATION
FY 2012**

Wednesday, November 03, 2010

PAGE: 1 of 2

DISTRICT	COUNTY	CSJ	HWY	PHASE	CITY	PROJECT SPONSOR	YOE COST	
3 - Wichita Falls	Wichita	0156-04-105	US 82	C	Wichita Falls	TxDOT	\$ 540,259	
LIMITS FROM:	On frontage roads from FM 369					REVISION DATE:	Jul-10	
LIMITS TO:	Fairway Blvd.					MPO PROJ NUM:	N/A	
PROJECT	Full depth concrete pavement repair.					FUNDING CAT(S):	1	
DESCRIPTION:	Rehabilitation of existing roadway.					PROJECT HISTORY:	Ancestor CSJ 0156-04-980	
REMARKS P7:								
TOTAL PROJECT COST INFORMATION			AUTHORIZED FUNDING BY CATEGORY/SHARE					
PRELIMINARY ENGINEERING:	\$ 26,473.00	COST OF APPROVED PHASES:	FEDERAL	STATE	LOCAL	LC	TOTAL	
ROW PURCHASE:	\$ -		1 - PRVNT	\$ 432,207	\$ 108,052	\$ -	\$ -	\$ 540,259
CONSTRUCTION COST:	\$ 540,259.00			\$ -	\$ -	\$ -	\$ -	\$ -
CONSTRUCTION ENGINEERING:	\$ 40,519.00		TOTAL:	\$ 432,207	\$ 108,052	\$ -	\$ -	\$ 540,259
CONTINGENCIES:	\$ 37,818.00							
INDIRECT COSTS:	\$ 41,168.00							
BOND FINANCING:	\$ -							
OTHER FIELD:	\$ -							
TOTAL PROJEC COST:	\$ 686,237.00							
3 - Wichita Falls	Wichita	0156-04-979	US 82	C	Wichita Falls	TxDOT	\$ 94,099	
LIMITS FROM:	Archer County Line					REVISION DATE:	Jul-10	
LIMITS TO:	FM 369					MPO PROJ NUM:	N/A	
PROJECT	Seal Coat					FUNDING CAT(S):	1	
DESCRIPTION:						PROJECT HISTORY:	Contract CSJ 0043-07-977	
REMARKS P7:								
TOTAL PROJECT COST INFORMATION			AUTHORIZED FUNDING BY CATEGORY/SHARE					
PRELIMINARY ENGINEERING:	\$ 4,611.00	COST OF APPROVED PHASES:	FEDERAL	STATE	LOCAL	LC	TOTAL	
ROW PURCHASE:	\$ -		1 - PRVNT	\$ 75,279	\$ 18,820	\$ -	\$ -	\$ 94,099
CONSTRUCTION COST:	\$ 94,099.00			\$ -	\$ -	\$ -	\$ -	\$ -
CONSTRUCTION ENGINEERING:	\$ 4,705.00		TOTAL:	\$ 75,279	\$ 18,820	\$ -	\$ -	\$ 94,099
CONTINGENCIES:	\$ 6,116.00							
INDIRECT COSTS:	\$ 7,170.00							
BOND FINANCING:	\$ -							
OTHER FIELD:	\$ -							
TOTAL PROJEC COST:	\$ 116,701.00							
3 - Wichita Falls	Wichita	0802-01-980	FM 369	C	Wichita Falls	TxDOT	\$ 90,774	
LIMITS FROM:	FM 3492					REVISION DATE:	Jul-10	
LIMITS TO:	BU 287J					MPO PROJ NUM:	N/A	
PROJECT	Seal Coat					FUNDING CAT(S):	1	
DESCRIPTION:						PROJECT HISTORY:	Contract CSJ 0043-07-977	
REMARKS P7:								
TOTAL PROJECT COST INFORMATION			AUTHORIZED FUNDING BY CATEGORY/SHARE					
PRELIMINARY ENGINEERING:	\$ 4,448.00	COST OF APPROVED PHASES:	FEDERAL	STATE	LOCAL	LC	TOTAL	
ROW PURCHASE:	\$ -		1 - PRVNT	\$ 72,619	\$ 18,155	\$ -	\$ -	\$ 90,774
CONSTRUCTION COST:	\$ 90,774.00			\$ -	\$ -	\$ -	\$ -	\$ -
CONSTRUCTION ENGINEERING:	\$ 4,539.00		TOTAL:	\$ 72,619	\$ 18,155	\$ -	\$ -	\$ 90,774
CONTINGENCIES:	\$ 5,900.00							
INDIRECT COSTS:	\$ 6,917.00							
BOND FINANCING:	\$ -							
OTHER FIELD:	\$ -							
TOTAL PROJEC COST:	\$ 112,578.00							

PHASE: C = CONSTRUCTION, E = ENGINEERING, R = ROW, T = TRANSFER

FUNDING NOT FIXED FOR ANY PROJECTS IN THIS LIST

**2011-2014 STATEWIDE TRANSPORTATION IMPROVEMENT PROGRAM
WICHITA FALLS METROPOLITAN PLANNING ORGANIZATION
FY 2012**

Wednesday, November 03, 2010

PAGE: 2 of 2

DISTRICT	COUNTY	CSJ	HWY	PHASE	CITY	PROJECT SPONSOR	YOE COST
3 - Wichita Falls	Wichita	0802-02-981	FM 369	C	Wichita Falls	TxDOT	\$ 160,157
LIMITS FROM: BU 287J						REVISION DATE: Jul-10	
LIMITS TO: US 82						MPO PROJ NUM: N/A	
PROJECT: Seal Coat						FUNDING CAT(S): 1	
DESCRIPTION:						PROJECT HISTORY: Contract CSJ 0043-07-977	
REMARKS P7:							
TOTAL PROJECT COST INFORMATION			AUTHORIZED FUNDING BY CATEGORY/SHARE				
PRELIMINARY ENGINEERING:	\$ 7,848.00	COST OF APPROVED	FEDERAL	STATE	LOCAL	LC	TOTAL
ROW PURCHASE:	\$ -		1 - PRVNT	\$ 128,126	\$ 32,031	\$ -	\$ -
CONSTRUCTION COST:	\$ 160,157.00	PHASES:	\$ -	\$ -	\$ -	\$ -	\$ -
CONSTRUCTION ENGINEERING:	\$ 8,008.00		TOTAL:	\$ 128,126	\$ 32,031	\$ -	\$ -
CONTINGENCIES:	\$ 10,410.00						
INDIRECT COSTS:	\$ 12,204.00						
BOND FINANCING:	\$ -						
OTHER FIELD:	\$ -						
TOTAL PROJEC COST:	\$ 198,627.00						
3 - Wichita Falls	Wichita	0044-01-931	US 82	C	Wichita Falls	TxDOT	\$ 2,379,520
LIMITS FROM: 8th Street						REVISION DATE: Jul-10	
LIMITS TO: Galveston Stree						MPO PROJ NUM: PM-55TX	
PROJECT: Concrete patch and novachip						FUNDING CAT(S): 1	
DESCRIPTION:						PROJECT HISTORY: Contract CSJ 0044-01-931	
REMARKS P7:							
TOTAL PROJECT COST INFORMATION			AUTHORIZED FUNDING BY CATEGORY/SHARE				
PRELIMINARY ENGINEERING:	\$ 116,596.00	COST OF APPROVED	FEDERAL	STATE	LOCAL	LC	TOTAL
ROW PURCHASE:	\$ -		1 - PRVNT	\$ 1,903,616	\$ 475,904	\$ -	\$ -
CONSTRUCTION COST:	\$ 2,379,520.00	PHASES:	\$ -	\$ -	\$ -	\$ -	\$ -
CONSTRUCTION ENGINEERING:	\$ 118,976.00		TOTAL:	\$ 1,903,616	\$ 475,904	\$ -	\$ -
CONTINGENCIES:	\$ 154,669.00						
INDIRECT COSTS:	\$ 181,319.00						
BOND FINANCING:	\$ -						
OTHER FIELD:	\$ -						
TOTAL PROJEC COST:	\$ 2,951,080.00						
3 - Wichita Falls	WICHITA	0156-04-107	US 82	C	WICHITA FALLS	TxDOT	\$ 1,248,000
LIMITS FROM: FAIRWAY EXIT RAMP						REVISION DATE: Nov-10	
LIMITS TO:						MPO PROJ NUM: MO-17TX	
PROJECT RELOCATE EXIT RAMP						FUNDING CAT(S): 1	
DESCRIPTION:						PROJECT HISTORY: NEW PROJECT - NOV. 2010	
REMARKS P7:							
TOTAL PROJECT COST INFORMATION			AUTHORIZED FUNDING BY CATEGORY/SHARE				
PRELIMINARY ENGINEERING:	\$ 61,152.00	COST OF APPROVED	FEDERAL	STATE	LOCAL	LC	TOTAL
ROW PURCHASE:	\$ -		1 - PRVNT	\$ -	\$ -	\$ -	\$ -
CONSTRUCTION COST:	\$ 1,248,000.00	PHASES:	\$ -	\$ -	\$ -	\$ -	\$ -
CONSTRUCTION ENGINEERING:	\$ 93,600.00		TOTAL:	\$ -	\$ -	\$ -	\$ -
CONTINGENCIES:	\$ 87,360.00			CONSTRAINED			
INDIRECT COSTS:	\$ 104,707.00			STATEWIDE			
BOND FINANCING:	\$ -						
OTHER FIELD:	\$ -						
TOTAL PROJEC COST:	\$ 1,594,819.00						

PHASE: C = CONSTRUCTION, E = ENGINEERING, R = ROW, T = TRANSFER FUNDING NOT FIXED FOR ANY PROJECTS IN THIS LIST

**2011-2014 STATEWIDE TRANSPORTATION IMPROVEMENT PROGRAM
WICHITA FALLS METROPOLITAN PLANNING ORGANIZATION
FY 2013**

Wednesday, November 03, 2010

PAGE: 1 of 1

DISTRICT	COUNTY	CSJ	HWY	PHASE	CITY	PROJECT SPONSOR	YOE COST	
Wichita Falls	Wichita	0044-01-924	US 82	C	Wichita Falls	TxDOT	\$ 9,545,968	
LIMITS FROM: US 82/287 Under Windthorst Road						REVISION DATE: Jul-10		
LIMITS TO: US 82/287 Under Windthorst Road						MPO PROJ NUM: MO-03TX		
PROJECT: Replace bridge and approaches						FUNDING CAT(S): 6 & 11		
DESCRIPTION:						PROJECT HISTORY: Contract CSJ 0044-01-924		
REMARKS P7:								
TOTAL PROJECT COST INFORMATION			AUTHORIZED FUNDING BY CATEGORY/SHARE					
PRELIMINARY ENGINEERING:	\$ 188,049.00	COST OF APPROVED PHASES:	FEDERAL	STATE	LOCAL	LC	TOTAL	
ROW PURCHASE:	\$ -		6 - STRUCT RHB:	\$ 5,458,774	\$ 1,364,694	\$ -	\$ -	6,823,468
CONSTRUCTION COST:	\$ 3,837,737.00		11 - DIST. DISC:	\$ 2,178,000	\$ 544,500	\$ -	\$ -	2,722,500
CONSTRUCTION ENGINEERING:	\$ 191,887.00		TOTAL:	\$ 7,636,774	\$ 1,909,194	\$ -	\$ -	9,545,968
CONTINGENCIES:	\$ 249,453.00							
INDIRECT COSTS:	\$ 292,436.00							
BOND FINANCING:	\$ -							
OTHER FIELD:	\$ -							
TOTAL PROJEC COST:	\$ 4,759,562.00							
Wichita Falls	Wichita	0156-14-957	BU 277A	C	Wichita Falls	TxDOT	\$ 1,033,698	
LIMITS FROM: Fairway Blvd.						REVISION DATE: Jul-10		
LIMITS TO: Allendale Rd.						MPO PROJ NUM: PM-44TX		
PROJECT: Full depth pavement repair and ultra thin bond hot mix wear course						FUNDING CAT(S): 1		
DESCRIPTION:						PROJECT HISTORY: Contract CSJ 0156-14-957		
REMARKS P7:								
TOTAL PROJECT COST INFORMATION			AUTHORIZED FUNDING BY CATEGORY/SHARE					
PRELIMINARY ENGINEERING:	\$ 50,651.00	COST OF APPROVED PHASES:	FEDERAL	STATE	LOCAL	LC	TOTAL	
ROW PURCHASE:	\$ -		1 - PRVNT	826,958	206,740	-	-	1,033,698
CONSTRUCTION COST:	\$ 1,033,698.00							
CONSTRUCTION ENGINEERING:	\$ 77,527.00							
CONTINGENCIES:	\$ 72,359.00							
INDIRECT COSTS:	\$ 78,768.00		TOTAL:	826,958	206,740	-	-	1,033,698
BOND FINANCING:	\$ -							
OTHER FIELD:	\$ -							
TOTAL PROJEC COST:	\$ 1,313,003.00							
							\$ -	
LIMITS FROM:						REVISION DATE:		
LIMITS TO:						MPO PROJ NUM:		
PROJECT:						FUNDING CAT(S):		
DESCRIPTION:						PROJECT HISTORY:		
REMARKS P7:								
TOTAL PROJECT COST INFORMATION			AUTHORIZED FUNDING BY CATEGORY/SHARE					
PRELIMINARY ENGINEERING:	\$ -	COST OF APPROVED PHASES:	FEDERAL	STATE	LOCAL	LC	TOTAL	
ROW PURCHASE:	\$ -			\$ -	\$ -	\$ -	\$ -	-
CONSTRUCTION COST:	\$ -			\$ -	\$ -	\$ -	\$ -	-
CONSTRUCTION ENGINEERING:	\$ -		TOTAL:	\$ -	\$ -	\$ -	\$ -	-
CONTINGENCIES:	\$ -							
INDIRECT COSTS:	\$ -							
BOND FINANCING:	\$ -							
OTHER FIELD:	\$ -							
TOTAL PROJEC COST:	\$ -							

PHASE: C = CONSTRUCTION, E = ENGINEERING, R = ROW, T = TRANSFER

FUNDING NOT FIXED FOR ANY PROJECTS IN THIS LIST

2011-2014 STATEWIDE TRANSPORTATION IMPROVEMENT PROGRAM
 WICHITA FALLS METROPOLITAN PLANNING ORGANIZATION
 FY 2014

Wednesday, November 03, 2010

PAGE: 1 of 1

DISTRICT	COUNTY	CSJ	HWY	PHASE	CITY	PROJECT SPONSOR	YOE COST		
						\$	-		
LIMITS FROM:						REVISION DATE:			
LIMITS TO:						MPO PROJ NUM:			
PROJECT						FUNDING CAT(S):			
DESCRIPTION:						PROJECT HISTORY:			
REMARKS P7:									
TOTAL PROJECT COST INFORMATION			AUTHORIZED FUNDING BY CATEGORY/SHARE						
PRELIMINARY ENGINEERING:	\$	-	COST OF	FEDERAL	STATE	LOCAL	LC	TOTAL	
ROW PURCHASE:	\$	-	APPROVED	CAT 1	\$	- \$	- \$	- \$	- \$
CONSTRUCTION COST:	\$	-	PHASES:		\$	- \$	- \$	- \$	
CONSTRUCTION ENGINEERING:	\$	-		TOTAL:	\$	- \$	- \$	- \$	
CONTINGENCIES:	\$	-							
INDIRECT COSTS:	\$	-							
BOND FINANCING:	\$	-							
OTHER FIELD:	\$	-							
TOTAL PROJEC COST:	\$	-							
						\$	-		
LIMITS FROM:						REVISION DATE:			
LIMITS TO:						MPO PROJ NUM:			
PROJECT						FUNDING CAT(S):			
DESCRIPTION:						PROJECT HISTORY:			
REMARKS P7:									
TOTAL PROJECT COST INFORMATION			AUTHORIZED FUNDING BY CATEGORY/SHARE						
PRELIMINARY ENGINEERING:	\$	-	COST OF	FEDERAL	STATE	LOCAL	LC	TOTAL	
ROW PURCHASE:	\$	-	APPROVED		\$	- \$	- \$	- \$	
CONSTRUCTION COST:	\$	-	PHASES:		\$	- \$	- \$	- \$	
CONSTRUCTION ENGINEERING:	\$	-		TOTAL:	\$	- \$	- \$	- \$	
CONTINGENCIES:	\$	-							
INDIRECT COSTS:	\$	-							
BOND FINANCING:	\$	-							
OTHER FIELD:	\$	-							
TOTAL PROJEC COST:	\$	-							
						\$	-		
LIMITS FROM:						REVISION DATE:			
LIMITS TO:						MPO PROJ NUM:			
PROJECT						FUNDING CAT(S):			
DESCRIPTION:						PROJECT HISTORY:			
REMARKS P7:									
TOTAL PROJECT COST INFORMATION			AUTHORIZED FUNDING BY CATEGORY/SHARE						
PRELIMINARY ENGINEERING:	\$	-	COST OF	FEDERAL	STATE	LOCAL	LC	TOTAL	
ROW PURCHASE:	\$	-	APPROVED	CAT 8	\$	- \$	- \$	- \$	
CONSTRUCTION COST:	\$	-	PHASES:		\$	- \$	- \$	- \$	
CONSTRUCTION ENGINEERING:	\$	-		TOTAL:	\$	- \$	- \$	- \$	
CONTINGENCIES:	\$	-							
INDIRECT COSTS:	\$	-							
BOND FINANCING:	\$	-							
OTHER FIELD:	\$	-							
TOTAL PROJEC COST:	\$	-							

PHASE: C = CONSTRUCTION, E = ENGINEERING, R = ROW, T = TRANSFER FUNDING NOT FIXED FOR ANY PROJECTS IN THIS LIST