

# Wichita Falls Metropolitan Planning Organization

[www.wfmpo.com](http://www.wfmpo.com)



## FY 2008-2011 Transportation Improvement Program

Approved By Transportation  
Policy Committee  
April 25th, 2007



Metropolitan Planning Organization

Wichita Falls | Pleasant Valley | Lakewood City



# Wichita Falls Metropolitan Planning Organization

## FY 2008 – FY 2011 Transportation Improvement Program

Prepared by:  
Wichita Falls Metropolitan Planning Organization

Participating Agencies:

City of Wichita Falls  
City of Pleasant Valley  
City of Lakeside City  
Texas Department of Transportation  
Wichita Falls Transit System

In cooperation with:

U.S. Department of Transportation  
Federal Highway Administration  
Federal Transit Administration

Public Meeting Dates: *April 4, 2007; April 17, 2007; April 25, 2007*

Approved by Transportation Policy Committee: *April 25, 2007*

Amended by Transportation Policy Committee: *February 6, 2008, July 23, 2008, October 22, 2008, January 28, 2009, February 25, 2009, April 22, 2009, January 27, 2010*



## **INTRODUCTION**

The United States Department of Transportation through the Federal Highway Administration and the Federal Transit Administration requires the development of a Transportation Improvement Program (TIP). The TIP identifies transportation improvement projects which have evolved from a continual, comprehensive, and cooperative planning process and are in the Wichita Falls 2005-2030 Metropolitan Transportation Plan.

### **A. PURPOSE**

SAFETEA-LU (Safe, Accountable, Flexible, Efficient Transportation Equity Act: A Legacy for Users) requires that the metropolitan transportation planning process include the development of a Transportation Improvement Program (TIP). The TIP provides a short-range planning document that coordinates the transportation projects of the City of Wichita Falls, City of Pleasant Valley, City of Lakeside City Wichita County, the Texas Department of Transportation, and the Wichita Falls Transit System within the Metropolitan Planning Area. SAFETEA-LU (Safe, Accountable, Flexible, Efficient Transportation Equity Act: A Legacy for Users) was enacted on August 10, 2005 and requires the Metropolitan Planning Organizations (MPO) to provide for consideration of projects and strategies that will serve to advance eight (8) transportation planning factors:

**Support Economic Vitality of the metropolitan area, especially by enabling global, competitiveness, productivity, and efficiency.**

Both short and long range planning process and projects support the economic vitality of the MPO area by improving transportation infrastructure. Projects such as the Kell West Main Lanes will enhance accessibility and safety to ensure efficient movement of people and goods. The nearing completion of the Falls Flyover will open a new venue for retail, commercial and housing developments as well as allowing for more efficient movement of traffic throughout the central portion of the City.

**Increase safety of transportation system for motorized and non-motorized users.**

Safety of the transportation system is a high priority in the Metropolitan Planning Area. During the update of the 2005-2030 Metropolitan Transportation Plan, the MPO devised a new MPO Identification Legend that would help the reader understand and locate projects intended for safety. The Falls Flyover Interchange will include the latest innovations in safety for motorists as it becomes a part of the Kell and Central Freeway system. Dynamic Message Signs were installed, in two locations on Central Freeway, several years ago to warn motorists of any unsafe conditions they might encounter.

Street improvement projects take into account the proper cross sections that include curb and gutter as well as sidewalks and possible bicycle lanes. Additionally, Intelligent Transportation System (ITS) projects will improve the performance and the operation and maintenance of the transportation network providing increased security and safety as well as efficiency. Rehabilitation projects such as the Safe Routes to School projects will also provide increased security and safety for both motorized and non-motorized users.

**Increase the security of transportation system for motorized and non-motorized users.**

After the events of September 11, 2001, the Federal Transit Administration has undertaken a series of major steps to help the transit industry counter terrorist threats. As part of this initiative, the FTA developed the top 20 security program action items for transit agencies. As a means to implement these security programs, Wichita Falls Transit System and Transportation Planning work together to insure all 20 security program action items have been addressed.

Intelligent Transportation System (ITS) and Safe Routes to School projects will also provide increased security for both motorized and non-motorized users.

**Increase the accessibility and mobility of people and freight.**

The essential movement of goods and products as freight cargo is often considered a region's lifeline. Ideally, a robust freight transportation system should rely on a variety of modes to ensure system flexibility. The development of intermodal networks requires preserving connections between modes (road/rail) and cooperation between local intermodal agencies and transportation providers. The implementation of the North American Free Trade Agreement (NAFTA) has also emphasized the development of a transportation plan that meets present and future intermodal transportation needs in the Wichita Falls MPO region.

The 2005-2030 Wichita Falls Metropolitan Transportation Plan targets improvements to intermodal facilities as a major objective under the goal of increasing economic vitality in the region. The Wichita Falls MPO area is well served by an intermodal network composed of truck routes, railroads and rail yards, and airports. The Wichita Falls MPO area truck network provides a vital link between airports, rail yards and trucking centers. This network is maintained by preserving arterial and freeway corridors at acceptable service levels to ensure connectivity between the various intermodal facilities. The WFMPO region also has major truck service facilities along US 287 in Jolly, Texas and at the intersection of Old Jacksboro Hwy. (Loop 473) and US 281/287.

**Protect and enhance the environment, promote energy conservation, improve the quality of life, and promote consistency between transportation improvements and State and local planned growth and economic development patterns.**

An effective transportation system provides the basis for activities surrounding national parks, recreation areas, and historic sites. The MPO has always promoted accessibility to these areas and will continue to look at addressing these needs through the identification of projects that will best serve these facilities.

WFMPO will continue to promote the development of a transportation system that minimizes the degradation of fragile ecosystems, recreational areas, and other valuable natural resources in the WFMPO region.

WFMPO will continue to support the design and construction of transportation projects that adhere to high environmental standards. Such projects should reduce soil erosion, control sediment runoff, assist in floodplain management, protect watersheds, and enhance natural, historic, cultural and recreational resources within the region.

The Wichita Falls MPO is presently in attainment for all air quality categories. If any of the MPO area is classified as non-attainment in the future, this Plan will be revised to include

projects that will reduce vehicle emissions.

**Enhance the integration and connectivity of the transportation system, across and between modes, for people and freight.**

The Kell Freeway System (Falls Flyover and West Main Lanes) will improve the connectivity of the transportation system by creating direct access from West US 82/277 to Interstate 44/US 281/287 at its completion. The completion of the Falls Flyover will create a nexus of route connectivity from East to West and North to South thus decreasing traffic and congestion on US 281/287/277/82 and IH-44. The extension of Loop 11 north to Airport Road will allow greater access to the recently developed shopping center west of IH-44 including the new Wal-Mart North. Phase 1 and 2 of the Maplewood extension will greatly benefit retail businesses that are currently being built near Lawrence Road.

**Promote efficient system management and operation.**

This goal centers on improving person and goods movement within the existing transportation system. There are a number of projects that have taken place and will continue to take place in order to reduce the number and length of stop delays associated with vehicular traffic. Traffic light synchronization systems were implemented in order to reduce vehicle stops and delays leading to savings in fuel consumption and lost time.

The MPO will continue to encourage initiatives that promote transit and other transportation modes as alternatives to the single occupancy vehicle and to promote operational efficiency through the use of technological improvements. WFMPO will continue to support measures that reduce traffic congestion and peak hour travel demand.

**Emphasize the preservation of the existing transportation system.**

This goal focuses on optimizing the existing system while accommodating present and future transportation needs without constructing expensive new transportation facilities. This will help improve system reliability, enhance safety, and reduce operating costs.

Improvement projects to rehabilitate the existing transportation system are one of the MPO's highest priorities. The existing transportation infrastructure is of utmost importance in order to continue providing a safe and reliable system. One goal of the MPO is to provide funding to continue the maintenance and operational enhancements to the existing street network. Another goal is operational improvements that will increase traffic flow and capacities.

The MPO will give priority to projects that improve the condition of the existing transportation system or upgrade existing transportation facilities; improve junctions between transportation modes and discourage improvements that create unnecessary increases in travel demand.

**B. DEFINITION OF AREA**

The Wichita Falls Metropolitan Planning Organization encompasses the eastern portion of Wichita County, which includes the City of Wichita Falls and Pleasant Valley, and a small portion of Archer County, which includes Lakeside City. The MPO area contains 150.01 square miles.

The population of Wichita Falls was 99,846 according to the U.S. Census Bureau estimates for 2005. Wichita County was estimated to have a 2005 population of 125,894. In contrast, the 2000 U.S. Census indicated the City of Wichita Falls Metropolitan Statistical Area (MSA) to be 140,518. The City of Lakeside City had an estimated 2005 population of 1,032 while the City of Pleasant Valley had an estimated 2005 population of 374.

### **C. PUBLIC INVOLVEMENT**

The FY 2008-2011 TIP was developed in accordance with the Public Involvement Policy of the Wichita Falls MPO. The public involvement component of the TIP process provides an opportunity for concerned residents to provide input, voice concerns and priorities regarding proposed roadway and public transportation projects.

The Public Involvement Policy requires two or more public meetings to be held to present the Transportation Improvement Program. At least one of these meetings shall be held a minimum of 10 days prior to the adoption of the program. Amendments to the Transportation Improvement Program updating or adjusting amounts of listed projects, let dates, project numbers and similar amendments will not require approval by the Transportation Policy Committee following concurrence by TxDOT.

The Transportation Policy Committee (TPC) for the Wichita Falls Metropolitan Planning Organization will adopt a Public Participation Plan for the Wichita Falls Metropolitan Planning Organization prior to July 1, 2007. The policy will include the following requirements for the development of the TIP:

The Public Participation Plan requires a public comment period of 30 days prior to the meeting at which the Transportation Policy Committee approves the Transportation Improvement Plan. The TIP will be posted on the MPO's website 30 days prior to the same meeting.

Legal Notices of all the transportation planning public meetings will be published prior to the adoption of the new 4-year Transportation Improvement Program (TIP). Legal Notices will be published in the daily local newspaper *Times Record News* and the Spanish language publication *Fronteras*. To ensure an opportunity for all interested parties to review and comment on the TIP, the MPO has developed an extensive email list that includes Federal, State, Tribal and Local agencies and all interested parties, including stakeholders and citizens, as discussed in Methods and Strategies of the Public Participation Plan. Additionally, the TIP is posted on the WFMPPO's website at [www.wfmpo.com](http://www.wfmpo.com) and [www.wfmpo.org](http://www.wfmpo.org) for people to view.

### **D. PROJECT SELECTION PROCESS**

The approved Transportation Improvement Program shall be utilized for programming projects within the metropolitan area. Any projects listed in the first year of the approved Transportation Improvement Program shall be considered in the first priority and may be implemented as soon as plans are completed and funds are appropriated. Should any project not be implemented from the first priority, then projects should be selected from the second year which shall be considered the second priority, and, those projects may be implemented as plans are completed and funds are appropriated. Projects in the third and fourth years will follow this same procedure. This procedure was developed in cooperation with the Texas Department of Transportation, Wichita Falls Transit System, and Wichita

Falls MPO. See Section 134 (h) (2) of Title 23 U.S.C. as amended.



## E. PROGRESS FROM PREVIOUS YEARS

The following projects were implemented, scheduled for letting, or designed during FY 2005 and/or FY 2006. For updates regarding highway and street projects, please refer to the Annual Project Listing which can be found on the Wichita Falls MPO website at [www.wfmipo.com](http://www.wfmipo.com) or [www.wfmipo.org](http://www.wfmipo.org) or by requesting a copy from the WFMPO, 2100 Seymour Hwy., Wichita Falls, Texas 76301, via email through the above websites or by calling (940) 761-7450. The MPO may also provide progress updates during Transportation Advisory (TAC) and Transportation Policy (TPC) committee meetings throughout the year. Minutes of these meetings are also provided on the website.

Project Name	Project Limits	Description	Estimated Cost
IH 44	At Maurine Street Overpass	Landscaping	\$67,600
Loop 473	At US 82 Overpass	Landscaping	\$91,834
Loop 473	At Holliday Road	Channelization	\$61,244
US 82	Kemp St. to US 287	Improve Guardrail	\$45,100
US 82	At Fairway Blvd.	Safety Lighting at Intersection	\$28,140
US 82	0.5 Miles W. of Fairway Blvd to Fairway Blvd.	Safety Lighting	\$36,477
IH 44	Near Bacon Switch Rd. and East Rd.	Safety Illumination	\$103,170
City Street	Cypress Ave. at Drainage Ditch	Replace Bridge & Approaches	\$229,132
US 82	US 82 at US 281	Falls Flyover Interchange	\$16,896,955
US 82	US 82 at US 281	Falls Flyover Interchange	\$9,214,769
BUS 287J	At Galveston Street	Install Traffic Signals & Flashing Beacons	\$99,943
IH 44	BUS 277A Exit Ramp to 6 <sup>th</sup> Street	Preventive Maintenance & Rehabilitation	\$281,050
US 287	8 <sup>th</sup> Street to 6 <sup>th</sup> Street	Preventive Maintenance & Rehabilitation	\$281,050
BUS 287J	Loop 11 to 0.3 Miles W. of IH 44	Widen Structures	\$57,679
US 287	0.2 Miles S. of SH 240 to 1.2 Miles S. of SH 240	Install Traffic Signals & Flashing Beacons	\$63,724
US 82	At US 82 & Galveston Street	Install Traffic Signals & Flashing Beacons	\$65,823
Spur 479	US 287/IH 44 to Broad Street	Preventive Maintenance & Rehabilitation	\$140,525
BUS 277A	Baylor Street to US 287/IH 44	Preventive Maintenance & Rehabilitation	\$140,525
FM 367	0.3 Miles E. of FM 1814 to 1.9 Miles E. of FM 1814	Preventive Maintenance & Rehabilitation	\$230,000

**F. AIR QUALITY ISSUES**

The Clean Air Act Amendments of 1990 have significantly impacted transportation activities. The impacts include a conformity analysis on all transportation programs, including the TIP, as well as statewide penalties if non-attainment areas do not meet national ambient air quality standards by the designated years for their areas.

The City of Wichita Falls is currently listed as "Attainment" in all categories.

**G. AMERICANS WITH DISABILITIES ACT**

All projects considered for funding, regardless of the source, will include provisions for the meeting the needs of the disabled. The Cities of Wichita Falls, Pleasant Valley and Lakeside City, Wichita County, the Texas Department of Transportation and the Wichita Falls Transit System continue their efforts to identify and aid the disabled in their mobility needs.

All public transportation buses purchased by the City of Wichita Falls are wheelchair-lift equipped and fully accessible to the mobility impaired.

## GLOSSARY FOR PROJECT LISTINGS

<b>CS</b>	City Street
<b>CSJ</b>	Control Section Job Number – TXDOT assigned number for projects entered into the Project Development Program (PDP).
<b>PHASE</b>	Project Phase – for Federal Funding (C=Construction, E=Engineering, ROW=Right of Way Acquisition, and T=Transfer)
<b>MPO ID</b>	MPO Project Identification Number – A number assigned by the MPO for local project identification. For use in relating projects to the Metropolitan Transportation Plan.

**FUNDING CATEGORY** – TxDOT category of funding used to fund the project.

1. Preventive Maintenance and Rehabilitation
2. Metropolitan Area Corridor Projects
3. Urban Area Corridor Projects
4. Statewide Connectivity Corridor Projects
5. Congestion Mitigation and Air Quality Improvement
6. Structures Replacement and Rehabilitation
7. Metropolitan Mobility/Rehabilitation
8. Safety
9. Transportation Enhancements
10. Supplemental Transportation Projects
11. District Discretionary
12. Strategic Priority

## Grouped Project CSJ

WFS MPO ID	Proposed CSJ	Grouped Project Category	Definition and Funding
PE	5000-00-950	Preliminary Engineering	Preliminary Engineering for any project that is not added capacity in a non-attainment area. Includes activities which do not involve or lead directly to construction such as planning and technical studies, grants for training and research programs.
RW	5000-00-951	Right of Way Acquisition	Right of Way acquisition for any project that is not added capacity in a non-attainment area. Includes relocation assistance, hardship acquisition and protective buying.
PM	5000-00-952 5000-00-957 5000-00-958	Preventive Maintenance and Rehabilitation	Projects to include pavement repair to preserve existing pavement so that it may achieve its designed loading. Includes seal coats, overlays, resurfacing, restoration and rehabilitation done with existing ROW. Also includes modernization of a highway by reconstruction, adding shoulders or adding auxiliary lanes (e.g., parking, weaving, turning, climbing, non-added capacity).
BR	5000-00-953	Bridge Replacement and Rehabilitation	Projects to replace and/or rehabilitate functionally obsolete or structurally deficient bridges.
RR	5000-00-954	Railroad Grade Separations	Projects to construct or replace existing highway-railroad grade crossings and to rehabilitate and/or replace deficient railroad underpasses, resulting in no added capacity.
SF	5800-00-950	Safety	Projects to include the construction or replacement/rehabilitation of guard rails, median barriers, crash cushions, pavement markings, skid treatments, medians, lighting improvements, railroad/highway crossing warning devices, fencing, intersection improvements (e.g., turn lanes), signalization projects and interchange modifications. Also includes projects funded via the Federal Hazard Elimination Program and the Federal Railroad Signal Safety Program.
LD	5000-00-956	Landscaping	Project consisting of typical right of way landscape development, establishment and aesthetic improvements to include any associated erosion control and environmental mitigation activities.
ITS	5800-00-915	Intelligent Transportation Systems Deployment	Highway traffic operation improvement projects including the installation of ramp metering control devices, variable message signs, traffic monitoring equipment and projects in the Federal ITS/IVHS programs.
B/P	5000-00-916	Bicycle and Pedestrian	Construction or rehabilitation of bicycle and pedestrian lanes, paths and facilities.
TWS	5000-00-917	Safety Rest Areas and Truck Weigh Stations	Construction and improvement of rest areas and truck weigh stations.
TI	5000-00-918	Transit Improvements	Projects include the construction and improvement of small passenger shelters and information kiosks. Also includes the construction and improvement of rail storage/maintenance facilities bus transfer facilities here minor amounts of additional land are required and there is not a substantial increase in the number of users.

# FEDERALLY FUNDED HIGHWAY PROJECTS

## **SAFETEA-LU CHECKLIST FOR YEAR OF EXPENDITURE (YOE) AND TOTAL PROJECT COST FINANCIAL PLAN DATA FOR FEDERALLY FUNDED HIGHWAY PROJECTS**

**MPO Policy Board Adoption/Resolution** – documentation that the MPO Policy Board has formally adopted the February 2008 TIP Revision (and if necessary an MTP revision), reflecting total project cost and Year-of-Expenditure (YOE) cost and revenue estimates consistent with FHWA/FTA metropolitan planning regulations (23 CFR 450) is indicated in the January 2008 Transportation Policy Committee meeting minutes and on page 2 of this document immediately after the cover page.

**MPO Public Participation** – documentation of public and interagency resource agency involvement consistent with the MPO's adopted public participation plan procedures for TIP and MTP revisions was done in accordance with the WFMPO's adopted Public Participation Plan. Environmental Justice Public Meetings were held in September 2007 allowing the public and all interested agencies and stakeholders the opportunity to examine, review and comment on the 2007-2008 Surface Transportation Prioritized Projects List. Some of the projects in this prioritized list are listed within this 2008-2011 TIP revision. Project descriptions, limits, funding categories and total costs are all listed below.

**State DOT Adoption** – documentation of State DOT public participation and adoption action consistent with the most recently adopted State DOT public participation and approval procedures for STIP revisions per Texas Administrative Code under Title 43, Part 1, Chapter 15, Subchapter A, under Section 15.8 is on file with the local Wichita Falls TxDOT District. The Wichita Falls TxDOT district held a public meeting for review and comment on the Unified Transportation Plan for our region on March 20, 2007.

**Documentation of the YOE and Total Project Cost Methodology** – for highway elements utilized by the MPO and/or TxDOT including the calculation of the YOE and total project cost as part of the financial plan document for the relevant MPO TIP/STIP is included in this TIP revision and is shown below in the associated fiscal year project listings. Year-of-Expenditure and Total Project Cost Methodology is based upon calculations derived from the Texas Department of Transportation's DCIS system. An additional line of information has been added to each Federally Funded Highway project listed by State Category within this TIP revision reflecting the Total Project Cost as calculated by the TxDOT DCIS system. Information on the additional line includes: Construction, PE, ROW, Bond Finance, CE, Contingencies, and Indirect costs.

**Documentation of the Rate of Inflation (ROI)** – used for determining YOE and total project cost, including all phases of the project's life. TxDOT has assumed a 4% rate of inflation for construction costs within the DCIS system. The Wichita Falls MPO will adopt this same inflation rate for use in all current and future TIP and MTP revisions.

**Documentation of the Rate of Growth (ROG)** – for incoming Federal, State, and Local sources of revenues (including private sources) used to estimate total projected

incoming revenues as part of the federal-aid highway and transit program. The Wichita Falls MPO will assume a rate of growth of 4%, which is in line with the ROI of 4%, and is based on consultations with our local TxDOT District.

**YOE Funding Estimate** – include YOE cost estimates for each project or project phase included in the TIP/STIP and for each project included in the MTP (if the MTP is being revised). The Wichita Falls MPO has included YOE cost estimates for each project located in the Federally Funded Highway Projects, Fiscal Year Projects by State Category section of this TIP revision. No YOE cost estimates are included for Appendix A – Statewide Grouped CSJ Projects by State Category. YOE cost estimates are based on DCIS calculations.

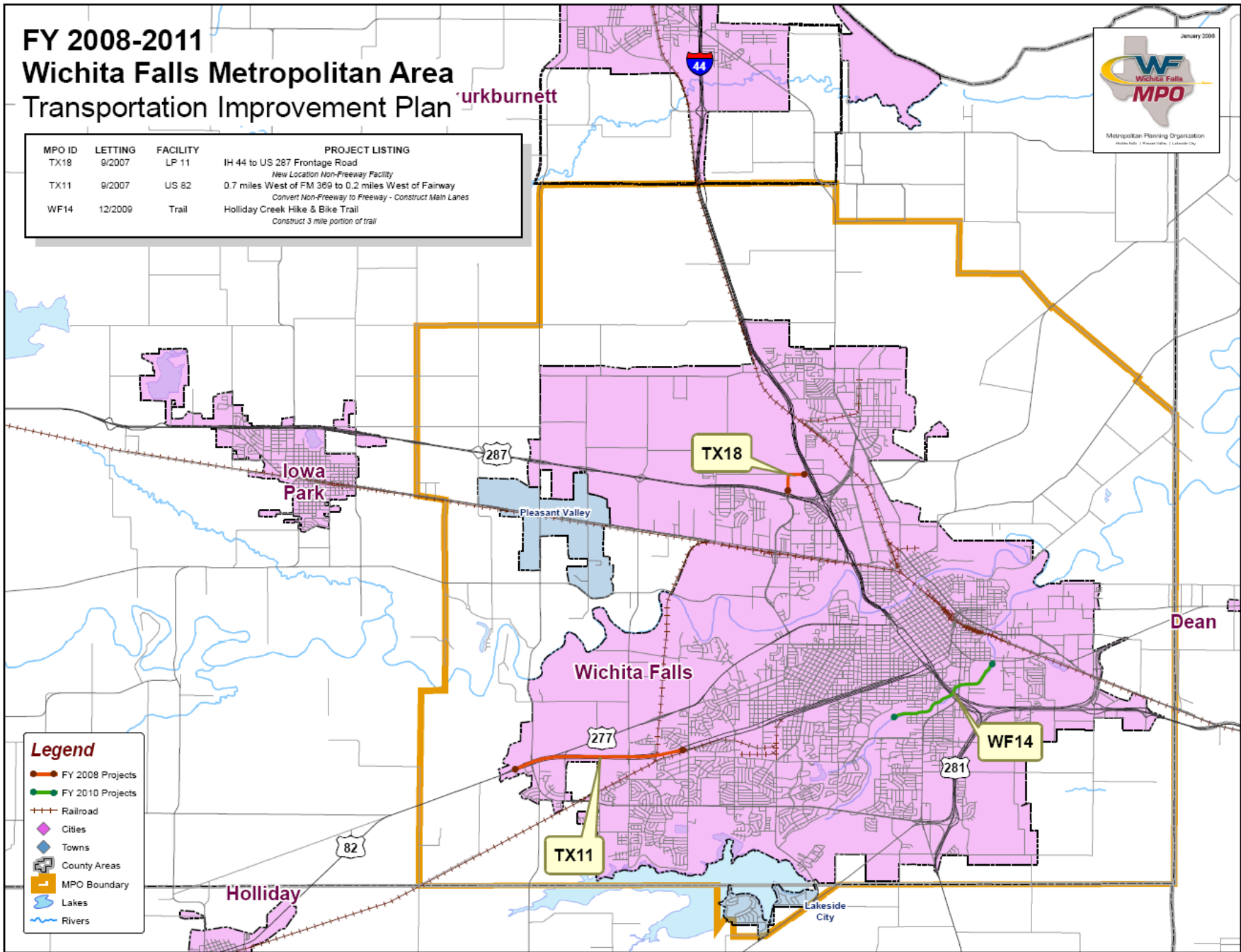
**Total Project Cost** – for each highway or transit project included in the TIP/STIP and MTP (if MTP is being revised). Total project cost should reflect estimated cost of all project phases. It is understood that not all project phases may be implemented within the time-frame of the TIP/STIP. An additional line of information has been added to each Federally Funded Highway project listed by State Category within this TIP revision reflecting the Total Project Cost as calculated by the TxDOT DCIS system. Information on the additional line includes: Construction, PE, ROW, Bond Finance, CE, Contingencies, and Indirect costs.

**Documentation of MPO and Transit Agency Coordination** – provide adequate documentation of coordination and consultation with relevant regional transit authorities or operators within the MPO planning area regarding transit-related financial operating and capital/maintenance costs and revenues with the applicable regional transit provider(s) as found necessary for FTA-funded transit projects and programs included within the TIP. The Wichita Falls MPO held two public hearings for the FY 2008 Transit Grant on December 4<sup>th</sup> and 6<sup>th</sup> of 2007. Programming of funding for the Wichita Falls Transit System is always done on a yearly basis. Therefore, YOE and total project costs, including ROI and ROG, were calculated for each fiscal year during the original development of the 2008-2011 TIP. Under the Federally Funded Transit Projects section of this document, we have shown the actual dollars programmed for Capital, Preventive Maintenance, Planning and Operating Assistance for FY 2008. The remaining fiscal years are estimates only. The Wichita Falls MPO Director is also on the Regional Transportation Plan Committee, which meets quarterly to discuss better integration of regional transit resources. This is our primary means of coordinating and consulting with other relevant regional transit authorities such as Sharplines and Texoma Area Paratransit System (TAPS). Documentation of all transit public hearings is available for review at the Wichita Falls MPO office.

# FY 2008-2011 Wichita Falls Metropolitan Area Transportation Improvement Plan



MPO ID	LETTING	FACILITY	PROJECT LISTING
TX18	9/2007	LP 11	IH 44 to US 287 Frontage Road <i>New Location Non-Freeway Facility</i>
TX11	9/2007	US 82	0.7 miles West of FM 369 to 0.2 miles West of Fairway <i>Convert Non-Freeway to Freeway - Construct Main Lanes</i>
WF14	12/2009	Trail	Holliday Creek Hike & Bike Trail <i>Construct 3 mile portion of trail</i>





**WICHITA FALLS MPO - FEDERALLY FUNDED HIGHWAY PROJECTS  
TRANSPORTATION IMPROVEMENT PROGRAM (TIP)**

**FY 2008 Projects by State Category**

DISTRICT	COUNTY	CSJ#	HWY	EST LET DATE	PHASE	CITY	TIP/MTP PROJ ID	YOE COST
WICHITA FALLS	WICHITA	0043-14-020	LP 11	9/2007	C,E,R	WICHITA FALLS	WFS CAT 11-1	
LIMITS FROM:	IH 44					FUND CATEGORY:	11 - DIST DISCRETION	
LIMITS TO:	US 287 FRONTAGE ROAD					REV DATE:	3/2008	\$3,607,315
DESCRIPTION:	NEW LOCATION NON-FREEWAY FACILITY					OTHER CATEGORIES:		\$3,607,315
REMARKS:						LOCAL CONTRIBUTION:		\$0
YEAR-OF-EXP:	2008					MPO PROJ ID	TX-18	
TTL. PROJ. COST	CONSTRUCTION	PE	ROW	CE		BOND FINANCE	CONTINGINCIES	INDIRECT
4,009,373.12	2,892,501.71	141,732.58	428,456.00	144,625.09		0.00	202,475.12	199,582.62
WICHITA FALLS	WICHITA	0156-04-080	US 82	9/2007	C,E	WICHITA FALLS	WFS CAT 3-2	
LIMITS FROM:	2.1 MILES WEST OF FM 369					FUND CATEGORY:	3 - URBAN CORRIDOR	
LIMITS TO:	MCNEIL (KELL FREEWAY)					REV DATE:	3/2008	\$34,794,131
DESCRIPTION:	CONSTRUCT MAIN LANES					OTHER CATEGORIES:		\$34,794,131
REMARKS:	(FUNDING CHANGED FROM CAT 11 TO CAT 3 - ID WAS WFSCAT 11-9)					LOCAL CONTRIBUTION:		\$0
YEAR-OF-EXP:	2008					MPO PROJ ID	TX-11	
TTL. PROJ. COST	CONSTRUCTION	PE	ROW	CE		BOND FINANCE	CONTINGINCIES	INDIRECT
38,915,749.38	31,950,533.17	1,565,576.12	0.00	1,278,021.32		0.00	1,917,031.99	2,204,586.78
WICHITA FALLS						WICHITA FALLS		
LIMITS FROM:						FUND CATEGORY:		
LIMITS TO:						REV DATE:		
DESCRIPTION:						OTHER CATEGORIES:		
REMARKS:						LOCAL CONTRIBUTION:		
YEAR-OF-EXP:						MPO PROJ ID		
TTL. PROJ. COST	CONSTRUCTION	PE	ROW	CE		BOND FINANCE	CONTINGINCIES	INDIRECT
WICHITA FALLS						WICHITA FALLS		
LIMITS FROM:						FUND CATEGORY:		
LIMITS TO:						REV DATE:		
DESCRIPTION:						OTHER CATEGORIES:		
REMARKS:						LOCAL CONTRIBUTION:		
YEAR-OF-EXP:						MPO PROJ ID		
TTL. PROJ. COST	CONSTRUCTION	PE	ROW	CE		BOND FINANCE	CONTINGINCIES	INDIRECT
WICHITA FALLS						WICHITA FALLS		
LIMITS FROM:						FUND CATEGORY:		
LIMITS TO:						REV DATE:		
DESCRIPTION:						OTHER CATEGORIES:		
REMARKS:						LOCAL CONTRIBUTION:		
YEAR-OF-EXP:						MPO PROJ ID		
TTL. PROJ. COST	CONSTRUCTION	PE	ROW	CE		BOND FINANCE	CONTINGINCIES	INDIRECT
<b>FY 2008 – MPO PROJECT TOTALS FOR WICHITA FALLS:</b>								<b>\$38,401,446</b>

**WICHITA FALLS MPO - FEDERALLY FUNDED HIGHWAY PROJECTS  
TRANSPORTATION IMPROVEMENT PROGRAM (TIP)  
FY 2009 Projects by State Category**

DISTRICT	COUNTY	CSJ#	HWY	EST LET DATE	PHASE	CITY	TIP/MTP PROJ ID	EST COST
WICHITA FALLS						WICHITA FALLS		
LIMITS FROM:						FUND CATEGORY:		
LIMITS TO:						REV DATE:		
DESCRIPTION:						OTHER CATEGORIES:		
REMARKS:						LOCAL CONTRIBUTION:		
YEAR-OF-EXP:						MPO PROJ ID		
TTL. PROJ. COST	CONSTRUCTION		PE	ROW	CE	BOND FINANCE	CONTINGINCIES	INDIRECT
WICHITA FALLS						WICHITA FALLS		
LIMITS FROM:						FUND CATEGORY:		
LIMITS TO:						REV DATE:		
DESCRIPTION:						OTHER CATEGORIES:		
REMARKS:						LOCAL CONTRIBUTION:		
YEAR-OF-EXP:						MPO PROJ ID		
TTL. PROJ. COST	CONSTRUCTION		PE	ROW	CE	BOND FINANCE	CONTINGINCIES	INDIRECT
WICHITA FALLS						WICHITA FALLS		
LIMITS FROM:						FUND CATEGORY:		
LIMITS TO:						REV DATE:		
DESCRIPTION:						OTHER CATEGORIES:		
REMARKS:						LOCAL CONTRIBUTION:		
YEAR-OF-EXP:						MPO PROJ ID		
TTL. PROJ. COST	CONSTRUCTION		PE	ROW	CE	BOND FINANCE	CONTINGINCIES	INDIRECT
WICHITA FALLS						WICHITA FALLS		
LIMITS FROM:						FUND CATEGORY:		
LIMITS TO:						REV DATE:		
DESCRIPTION:						OTHER CATEGORIES:		
REMARKS:						LOCAL CONTRIBUTION:		
YEAR-OF-EXP:						MPO PROJ ID		
TTL. PROJ. COST	CONSTRUCTION		PE	ROW	CE	BOND FINANCE	CONTINGINCIES	INDIRECT
WICHITA FALLS						WICHITA FALLS		
LIMITS FROM:						FUND CATEGORY:		
LIMITS TO:						REV DATE:		
DESCRIPTION:						OTHER CATEGORIES:		
REMARKS:						LOCAL CONTRIBUTION:		
YEAR-OF-EXP:						MPO PROJ ID		
TTL. PROJ. COST	CONSTRUCTION		PE	ROW	CE	BOND FINANCE	CONTINGINCIES	INDIRECT
<b>FY 2009 – MPO PROJECT TOTALS FOR WICHITA FALLS:</b>								<b>\$0</b>

**WICHITA FALLS MPO - FEDERALLY FUNDED HIGHWAY PROJECTS  
TRANSPORTATION IMPROVEMENT PROGRAM (TIP)  
FY 2010 Projects by State Category**

DISTRICT	COUNTY	CSJ#	HWY	EST LET DATE	PHASE	CITY	TIP/MTP PROJ ID	EST COST
WICHITA FALLS	WICHITA	0903-03-901	H&B TRAIL	12/2009	C,E	WICHITA FALLS	WFS WF-4	
LIMITS FROM:	EAST SCOTT STREET					FUND CATEGORY:	10 -MISC	
LIMITS TO:	HAMILTON PARK					REV DATE:	2/2009	\$2,900,000
DESCRIPTION:	CONSTRUCTION OF BICYCLE/PEDESTRIAN TRAIL					OTHER CATEGORIES:		\$2,900,000
REMARKS:	PHASE III OF INNER LOOP TRAIL SYSTEM					LOCAL CONTRIBUTION:		
YEAR-OF-EXP:	2009					MPO PROJ ID	WF-14	
TTL. PROJ. COST	CONSTRUCTION		PE	ROW	CE	BOND FINANCE	CONTINGINCIES	INDIRECT
2,900,000.00	2,900,000.00							
WICHITA FALLS						WICHITA FALLS		
LIMITS FROM:						FUND CATEGORY:		
LIMITS TO:						REV DATE:		
DESCRIPTION:						OTHER CATEGORIES:		
REMARKS:						LOCAL CONTRIBUTION:		
YEAR-OF-EXP:						MPO PROJ ID		
TTL. PROJ. COST	CONSTRUCTION		PE	ROW	CE	BOND FINANCE	CONTINGINCIES	INDIRECT
WICHITA FALLS						WICHITA FALLS		
LIMITS FROM:						FUND CATEGORY:		
LIMITS TO:						REV DATE:		
DESCRIPTION:						OTHER CATEGORIES:		
REMARKS:						LOCAL CONTRIBUTION:		
YEAR-OF-EXP:						MPO PROJ ID		
TTL. PROJ. COST	CONSTRUCTION		PE	ROW	CE	BOND FINANCE	CONTINGINCIES	INDIRECT
WICHITA FALLS						WICHITA FALLS		
LIMITS FROM:						FUND CATEGORY:		
LIMITS TO:						REV DATE:		
DESCRIPTION:						OTHER CATEGORIES:		
REMARKS:						LOCAL CONTRIBUTION:		
YEAR-OF-EXP:						MPO PROJ ID		
TTL. PROJ. COST	CONSTRUCTION		PE	ROW	CE	BOND FINANCE	CONTINGINCIES	INDIRECT
WICHITA FALLS						WICHITA FALLS		
LIMITS FROM:						FUND CATEGORY:		
LIMITS TO:						REV DATE:		
DESCRIPTION:						OTHER CATEGORIES:		
REMARKS:						LOCAL CONTRIBUTION:		
YEAR-OF-EXP:						MPO PROJ ID		
TTL. PROJ. COST	CONSTRUCTION		PE	ROW	CE	BOND FINANCE	CONTINGINCIES	INDIRECT
<b>FY 2010 – MPO PROJECT TOTALS FOR WICHITA FALLS:</b>								<b>\$2,900,000</b>

**WICHITA FALLS MPO - FEDERALLY FUNDED HIGHWAY PROJECTS  
TRANSPORTATION IMPROVEMENT PROGRAM (TIP)  
FY 2011 Projects by State Category**

DISTRICT	COUNTY	CSJ#	HWY	EST LET DATE	PHASE	CITY	TIP/MTP PROJ ID	EST COST
WICHITA FALLS						WICHITA FALLS		
LIMITS FROM:						FUND CATEGORY:		
LIMITS TO:						REV DATE:		
DESCRIPTION:						OTHER CATEGORIES:		
REMARKS:						LOCAL CONTRIBUTION:		
YEAR-OF-EXP:						MPO PROJ ID		
TTL. PROJ. COST	CONSTRUCTION		PE	ROW	CE	BOND FINANCE	CONTINGINCIES	INDIRECT
WICHITA FALLS						WICHITA FALLS		
LIMITS FROM:						FUND CATEGORY:		
LIMITS TO:						REV DATE:		
DESCRIPTION:						OTHER CATEGORIES:		
REMARKS:						LOCAL CONTRIBUTION:		
YEAR-OF-EXP:						MPO PROJ ID		
TTL. PROJ. COST	CONSTRUCTION		PE	ROW	CE	BOND FINANCE	CONTINGINCIES	INDIRECT
WICHITA FALLS						WICHITA FALLS		
LIMITS FROM:						FUND CATEGORY:		
LIMITS TO:						REV DATE:		
DESCRIPTION:						OTHER CATEGORIES:		
REMARKS:						LOCAL CONTRIBUTION:		
YEAR-OF-EXP:						MPO PROJ ID		
TTL. PROJ. COST	CONSTRUCTION		PE	ROW	CE	BOND FINANCE	CONTINGINCIES	INDIRECT
WICHITA FALLS						WICHITA FALLS		
LIMITS FROM:						FUND CATEGORY:		
LIMITS TO:						REV DATE:		
DESCRIPTION:						OTHER CATEGORIES:		
REMARKS:						LOCAL CONTRIBUTION:		
YEAR-OF-EXP:						MPO PROJ ID		
TTL. PROJ. COST	CONSTRUCTION		PE	ROW	CE	BOND FINANCE	CONTINGINCIES	INDIRECT
WICHITA FALLS						WICHITA FALLS		
LIMITS FROM:						FUND CATEGORY:		
LIMITS TO:						REV DATE:		
DESCRIPTION:						OTHER CATEGORIES:		
REMARKS:						LOCAL CONTRIBUTION:		
YEAR-OF-EXP:						MPO PROJ ID		
TTL. PROJ. COST	CONSTRUCTION		PE	ROW	CE	BOND FINANCE	CONTINGINCIES	INDIRECT
<b>FY 2011 – MPO PROJECT TOTALS FOR WICHITA FALLS:</b>								<b>\$0</b>

**FEDERALLY FUNDED  
TRANSIT PROJECTS**

**FY 2008 TRANSIT PROJECT LIST - SECTION 5307**

**WICHITA FALLS MPO TRANSPORTATION IMPROVEMENT PROGRAM**

Wichita Falls		YOE = Year of Expenditure	
General Project Information		Funding Information (YOE)	
<b>Project Sponsor:</b>	WICHITA FALLS TRANSIT SYSTEM	<b>Federal Funding Category</b>	5307
<b>MPO Project Number:</b>	WF-T2008-CAP	<b>Federal Share</b>	\$1,151,504
<b>Apportionment Year:</b>	FY 2008	<b>State Funds from TxDOT</b>	
<b>Project Phase:</b>	N/A	<b>Local Funds</b>	\$287,876
<b>Brief Project Description:</b>	Capital Expenditures - replacement buses, shop tools and equipment.	<b>Fiscal Year Cost</b>	\$1,439,380
		<b>Total Project Cost</b>	\$1,439,380
		<b>Trans. Dev. Credits Requested</b>	
<b>Sec 5309 ID # if applicable:</b>	N/A	<b>Trans. Dev. Credits Awarded (Date &amp; Amount)</b>	
<b>Amendment Date &amp; Action:</b>			
General Project Information		Funding Information (YOE)	
<b>Project Sponsor:</b>	WICHITA FALLS TRANSIT SYSTEM	<b>Federal Funding Category</b>	5307
<b>MPO Project Number:</b>	WF-T2008-PM	<b>Federal Share</b>	\$225,600
<b>Apportionment Year:</b>	FY2008	<b>State Funds from TxDOT</b>	
<b>Project Phase:</b>	N/A	<b>Local Funds</b>	\$56,400
<b>Brief Project Description:</b>	Preventive Maintenance	<b>Fiscal Year Cost</b>	\$282,000
		<b>Total Project Cost</b>	\$282,000
		<b>Trans. Dev. Credits Requested</b>	
<b>Sec 5309 ID # if applicable:</b>	N/A	<b>Trans. Dev. Credits Awarded (Date &amp; Amount)</b>	
<b>Amendment Date &amp; Action:</b>			
General Project Information		Funding Information (YOE)	
<b>Project Sponsor:</b>	WICHITA FALLS TRANSIT SYSTEM	<b>Federal Funding Category</b>	5307
<b>MPO Project Number:</b>	WF-T2008-OPS	<b>Federal Share</b>	\$400,130
<b>Apportionment Year:</b>	FY 2008	<b>State Funds from TxDOT</b>	\$352,224
<b>Project Phase:</b>	N/A	<b>Local Funds</b>	\$255,906
<b>Brief Project Description:</b>	Operating Expenditures	<b>Fiscal Year Cost</b>	\$1,008,260
		<b>Total Project Cost</b>	\$1,008,260
		<b>Trans. Dev. Credits Requested</b>	
<b>Sec 5309 ID # if applicable:</b>	N/A	<b>Trans. Dev. Credits Awarded (Date &amp; Amount)</b>	
<b>Amendment Date &amp; Action:</b>			
General Project Information		Funding Information (YOE)	
<b>Project Sponsor:</b>	WICHITA FALLS TRANSIT SYSTEM	<b>Federal Funding Category</b>	5307
<b>MPO Project Number:</b>	WF-T2008-PLG	<b>Federal Share</b>	\$44,000
<b>Apportionment Year:</b>	FY 2008	<b>State Funds from TxDOT</b>	
<b>Project Phase:</b>	N/A	<b>Local Funds</b>	\$11,000
<b>Brief Project Description:</b>	Planning Expenditures - Grant Administration, Annual Software Maintenance, & Transit Studies	<b>Fiscal Year Cost</b>	\$55,000
		<b>Total Project Cost</b>	\$55,000
		<b>Trans. Dev. Credits Requested</b>	
<b>Sec 5309 ID # if applicable:</b>	N/A	<b>Trans. Dev. Credits Awarded (Date &amp; Amount)</b>	
<b>Amendment Date &amp; Action:</b>			
<b>FY (TIP) 2008 - MPO PROJECT TOTALS</b>			<b>\$2,784,640</b>

**FY 2009 TRANSIT PROJECT LIST - SECTION 5307**

**WICHITA FALLS MPO TRANSPORTATION IMPROVEMENT PROGRAM**

Wichita Falls		YOE = Year of Expenditure	
General Project Information		Funding Information (YOE)	
Project Sponsor:	WICHITA FALLS TRANSIT SYSTEM	Federal Funding Category	5307
MPO Project Number:	WF-T2009-CAP	Federal Share*	\$354,765
Apportionment Year:	FY 2009	State Funds from TxDOT	
Project Phase:	N/A	Local Funds	\$88,691
Brief Project Description:	Capital Expenditures - replacement buses, shop tools and equipment.	Fiscal Year Cost	\$443,456
		Total Project Cost	\$443,456
		Trans. Dev. Credits Requested	
Sec 5309 ID # if applicable:	N/A	Trans. Dev. Credits Awarded (Date & Amount)	
Amendment Date & Action:			
General Project Information		Funding Information (YOE)	
Project Sponsor:	WICHITA FALLS TRANSIT SYSTEM	Federal Funding Category	5307
MPO Project Number:	WF-T2009-PM	Federal Share	\$216,320
Apportionment Year:	FY 2009	State Funds from TxDOT	
Project Phase:	N/A	Local Funds	\$54,080
Brief Project Description:	Preventive Maintenance	Fiscal Year Cost	\$270,400
		Total Project Cost	\$270,400
		Trans. Dev. Credits Requested	
Sec 5309 ID # if applicable:	N/A	Trans. Dev. Credits Awarded (Date & Amount)	
Amendment Date & Action:			
General Project Information		Funding Information (YOE)	
Project Sponsor:	WICHITA FALLS TRANSIT SYSTEM	Federal Funding Category	5307
MPO Project Number:	WF-T2009-OPS	Federal Share	\$407,536
Apportionment Year:	FY 2009	State Funds from TxDOT	\$302,319
Project Phase:	N/A	Local Funds	\$285,217
Brief Project Description:	Operating Expenditures	Fiscal Year Cost	\$995,072
		Total Project Cost	\$995,072
		Trans. Dev. Credits Requested	
Sec 5309 ID # if applicable:	N/A	Trans. Dev. Credits Awarded (Date & Amount)	
Amendment Date & Action:			
General Project Information		Funding Information (YOE)	
Project Sponsor:	WICHITA FALLS TRANSIT SYSTEM	Federal Funding Category	5307
MPO Project Number:	WF-T2009-PLG	Federal Share	\$25,958
Apportionment Year:	FY 2009	State Funds from TxDOT	
Project Phase:	N/A	Local Funds	\$6,490
Brief Project Description:	Planning Expenditures - Grant Administration, Annual Software Maintenance, & Transit Studies	Fiscal Year Cost	\$32,448
		Total Project Cost	\$32,448
		Trans. Dev. Credits Requested	
Sec 5309 ID # if applicable:	N/A	Trans. Dev. Credits Awarded (Date & Amount)	
Amendment Date & Action:			
<b>FY (TIP) 2009 - MPO PROJECT TOTALS</b>			<b>\$1,741,376</b>

**FY 2009 TRANSIT PROJECT LIST - SECTION 5307**

**WICHITA FALLS MPO TRANSPORTATION IMPROVEMENT PROGRAM**

Wichita Falls		YOE = Year of Expenditure	
General Project Information		Funding Information (YOE)	
<b>Project Sponsor:</b>	WICHITA FALLS TRANSIT SYSTEM	<b>Federal Funding Category</b>	5307
<b>MPO Project Number:</b>	WF-T2009-CAP (ARRA)	<b>Federal Share*</b>	\$1,340,000
<b>Apportionment Year:</b>	FY 2009	<b>State Funds from TxDOT</b>	
<b>Project Phase:</b>	N/A	<b>Local Funds</b>	\$0
<b>Brief Project Description:</b>	Capital Expenditure Request of \$1,340,000 for 4 additional buses from ARRA 2009 funds.	<b>Fiscal Year Cost</b>	\$1,340,000
		<b>Total Project Cost</b>	\$1,340,000
		<b>Trans. Dev. Credits Requested</b>	
<b>Sec 5309 ID # if applicable:</b>	N/A	<b>Trans. Dev. Credits Awarded (Date &amp; Amount)</b>	
<b>Amendment Date &amp; Action:</b> January 28, 2009: Policy Committee approval to use ARRA 2009 funds for 4 additional replacement buses.			
General Project Information		Funding Information (YOE)	
<b>Project Sponsor:</b>		<b>Federal Funding Category</b>	
<b>MPO Project Number:</b>		<b>Federal Share</b>	
<b>Apportionment Year:</b>		<b>State Funds from TxDOT</b>	
<b>Project Phase:</b>		<b>Local Funds</b>	
<b>Brief Project Description:</b>		<b>Fiscal Year Cost</b>	\$0
		<b>Total Project Cost</b>	\$0
		<b>Trans. Dev. Credits Requested</b>	
<b>Sec 5309 ID # if applicable:</b>		<b>Trans. Dev. Credits Awarded (Date &amp; Amount)</b>	
<b>Amendment Date &amp; Action:</b>			
General Project Information		Funding Information (YOE)	
<b>Project Sponsor:</b>		<b>Federal Funding Category</b>	
<b>MPO Project Number:</b>		<b>Federal Share</b>	
<b>Apportionment Year:</b>		<b>State Funds from TxDOT</b>	
<b>Project Phase:</b>		<b>Local Funds</b>	
<b>Brief Project Description:</b>		<b>Fiscal Year Cost</b>	\$0
		<b>Total Project Cost</b>	\$0
		<b>Trans. Dev. Credits Requested</b>	
<b>Sec 5309 ID # if applicable:</b>		<b>Trans. Dev. Credits Awarded (Date &amp; Amount)</b>	
<b>Amendment Date &amp; Action:</b>			
General Project Information		Funding Information (YOE)	
<b>Project Sponsor:</b>		<b>Federal Funding Category</b>	
<b>MPO Project Number:</b>		<b>Federal Share</b>	
<b>Apportionment Year:</b>		<b>State Funds from TxDOT</b>	
<b>Project Phase:</b>		<b>Local Funds</b>	
<b>Brief Project Description:</b>		<b>Fiscal Year Cost</b>	\$0
		<b>Total Project Cost</b>	\$0
		<b>Trans. Dev. Credits Requested</b>	
<b>Sec 5309 ID # if applicable:</b>		<b>Trans. Dev. Credits Awarded (Date &amp; Amount)</b>	
<b>Amendment Date &amp; Action:</b>			
General Project Information		Funding Information (YOE)	
<b>Project Sponsor:</b>		<b>Federal Funding Category</b>	
<b>MPO Project Number:</b>		<b>Federal Share</b>	
<b>Apportionment Year:</b>		<b>State Funds from TxDOT</b>	
<b>Project Phase:</b>		<b>Local Funds</b>	
<b>Brief Project Description:</b>		<b>Fiscal Year Cost</b>	\$0
		<b>Total Project Cost</b>	\$0
		<b>Trans. Dev. Credits Requested</b>	
<b>Sec 5309 ID # if applicable:</b>		<b>Trans. Dev. Credits Awarded (Date &amp; Amount)</b>	
<b>Amendment Date &amp; Action:</b>			
<b>FY (TIP) 2009 - MPO PROJECT TOTALS</b>			\$1,340,000



**FY 2010 TRANSIT PROJECT LIST - SECTION 5307**

**WICHITA FALLS MPO TRANSPORTATION IMPROVEMENT PROGRAM**

Wichita Falls		YOE = Year of Expenditure	
General Project Information		Funding Information (YOE)	
<b>Project Sponsor:</b>	WICHITA FALLS TRANSIT SYSTEM	<b>Federal Funding Category</b>	5307
<b>MPO Project Number:</b>	WF-T2010-CAP	<b>Federal Share</b>	\$1,069,824
<b>Apportionment Year:</b>	FY 2010	<b>State Funds from TxDOT</b>	
<b>Project Phase:</b>	N/A	<b>Local Funds</b>	\$267,456
<b>Brief Project Description:</b>	Capital Expenditures - Shop tools and equipment. Land acquisition, building demolition and architectural plans for construction of downtown transit hub.	<b>Fiscal Year Cost</b>	\$1,337,280
		<b>Total Project Cost</b>	\$1,337,280
		<b>Trans. Dev. Credits Requested</b>	
<b>Sec 5309 ID # if applicable:</b>	N/A	<b>Trans. Dev. Credits Awarded (Date &amp; Amount)</b>	
<b>Amendment Date &amp; Action:</b>			
General Project Information		Funding Information (YOE)	
<b>Project Sponsor:</b>	WICHITA FALLS TRANSIT SYSTEM	<b>Federal Funding Category</b>	5307
<b>MPO Project Number:</b>	WF-T2010-PM	<b>Federal Share</b>	\$524,570
<b>Apportionment Year:</b>	FY 2010	<b>State Funds from TxDOT</b>	
<b>Project Phase:</b>	N/A	<b>Local Funds</b>	\$131,142
<b>Brief Project Description:</b>	Preventive Maintenance	<b>Fiscal Year Cost</b>	\$655,712
		<b>Total Project Cost</b>	\$655,712
		<b>Trans. Dev. Credits Requested</b>	
<b>Sec 5309 ID # if applicable:</b>	N/A	<b>Trans. Dev. Credits Awarded (Date &amp; Amount)</b>	
<b>Amendment Date &amp; Action:</b>			
General Project Information		Funding Information (YOE)	
<b>Project Sponsor:</b>	WICHITA FALLS TRANSIT SYSTEM	<b>Federal Funding Category</b>	5307
<b>MPO Project Number:</b>	WF-T2010-OPS	<b>Federal Share</b>	\$369,509
<b>Apportionment Year:</b>	FY 2010	<b>State Funds from TxDOT</b>	\$317,002
<b>Project Phase:</b>	N/A	<b>Local Funds</b>	\$272,507
<b>Brief Project Description:</b>	Operating Expenditures	<b>Fiscal Year Cost</b>	\$959,018
		<b>Total Project Cost</b>	\$959,018
		<b>Trans. Dev. Credits Requested</b>	
<b>Sec 5309 ID # if applicable:</b>	N/A	<b>Trans. Dev. Credits Awarded (Date &amp; Amount)</b>	
<b>Amendment Date &amp; Action:</b>			
General Project Information		Funding Information (YOE)	
<b>Project Sponsor:</b>	WICHITA FALLS TRANSIT SYSTEM	<b>Federal Funding Category</b>	5307
<b>MPO Project Number:</b>	WF-T2008-PLG	<b>Federal Share</b>	\$42,400
<b>Apportionment Year:</b>	FY 2010	<b>State Funds from TxDOT</b>	
<b>Project Phase:</b>	N/A	<b>Local Funds</b>	\$10,600
<b>Brief Project Description:</b>	Planning Expenditures - Grant Administration, Annual Software Maintenance, & Transit Study	<b>Fiscal Year Cost</b>	\$53,000
		<b>Total Project Cost</b>	\$53,000
		<b>Trans. Dev. Credits Requested</b>	
<b>Sec 5309 ID # if applicable:</b>	N/A	<b>Trans. Dev. Credits Awarded (Date &amp; Amount)</b>	
<b>Amendment Date &amp; Action:</b>			
<b>FY (TIP) 2010 - MPO PROJECT TOTALS</b>			<b>\$3,005,010.00</b>

**FY 2010 TRANSIT PROJECT LIST - SECTION 5307**

**WICHITA FALLS MPO TRANSPORTATION IMPROVEMENT PROGRAM**

Wichita Falls		YOE = Year of Expenditure	
General Project Information		Funding Information (YOE)	
<b>Project Sponsor:</b>	WICHITA FALLS TRANSIT SYSTEM	<b>Federal Funding Category</b>	5307
<b>MPO Project Number:</b>	WF-T2010-CAP (ARRA)	<b>Federal Share</b>	\$430,192
<b>Apportionment Year:</b>	FY 2010	<b>State Funds from TxDOT</b>	
<b>Project Phase:</b>	N/A	<b>Local Funds</b>	
<b>Brief Project Description:</b>	Capital Expenditures - bus shelters, benches, farebox upgrades, replace aging bus audio/video security systems, install street annunciator systems, install AVL/GPS systems.	<b>Fiscal Year Cost</b>	\$430,192
		<b>Total Project Cost</b>	\$430,192
		<b>Trans. Dev. Credits Requested</b>	
<b>Sec 5309 ID # if applicable:</b>	N/A	<b>Trans. Dev. Credits Awarded (Date &amp; Amount)</b>	
<b>Amendment Date &amp; Action:</b>	April 22, 2009 - Transportation Policy Committee approval of Transit TIP Amendment using ARRA funds.		
General Project Information		Funding Information (YOE)	
<b>Project Sponsor:</b>		<b>Federal Funding Category</b>	
<b>MPO Project Number:</b>		<b>Federal Share</b>	
<b>Apportionment Year:</b>		<b>State Funds from TxDOT</b>	
<b>Project Phase:</b>		<b>Local Funds</b>	
<b>Brief Project Description:</b>		<b>Fiscal Year Cost</b>	
		<b>Total Project Cost</b>	
		<b>Trans. Dev. Credits Requested</b>	
<b>Sec 5309 ID # if applicable:</b>		<b>Trans. Dev. Credits Awarded (Date &amp; Amount)</b>	
<b>Amendment Date &amp; Action:</b>			
General Project Information		Funding Information (YOE)	
<b>Project Sponsor:</b>		<b>Federal Funding Category</b>	
<b>MPO Project Number:</b>		<b>Federal Share</b>	
<b>Apportionment Year:</b>		<b>State Funds from TxDOT</b>	
<b>Project Phase:</b>		<b>Local Funds</b>	
<b>Brief Project Description:</b>		<b>Fiscal Year Cost</b>	
		<b>Total Project Cost</b>	
		<b>Trans. Dev. Credits Requested</b>	
<b>Sec 5309 ID # if applicable:</b>		<b>Trans. Dev. Credits Awarded (Date &amp; Amount)</b>	
<b>Amendment Date &amp; Action:</b>			
General Project Information		Funding Information (YOE)	
<b>Project Sponsor:</b>		<b>Federal Funding Category</b>	
<b>MPO Project Number:</b>		<b>Federal Share</b>	
<b>Apportionment Year:</b>		<b>State Funds from TxDOT</b>	
<b>Project Phase:</b>		<b>Local Funds</b>	
<b>Brief Project Description:</b>		<b>Fiscal Year Cost</b>	
		<b>Total Project Cost</b>	
		<b>Trans. Dev. Credits Requested</b>	
<b>Sec 5309 ID # if applicable:</b>		<b>Trans. Dev. Credits Awarded (Date &amp; Amount)</b>	
<b>Amendment Date &amp; Action:</b>			
General Project Information		Funding Information (YOE)	
<b>Project Sponsor:</b>		<b>Federal Funding Category</b>	
<b>MPO Project Number:</b>		<b>Federal Share</b>	
<b>Apportionment Year:</b>		<b>State Funds from TxDOT</b>	
<b>Project Phase:</b>		<b>Local Funds</b>	
<b>Brief Project Description:</b>		<b>Fiscal Year Cost</b>	
		<b>Total Project Cost</b>	
		<b>Trans. Dev. Credits Requested</b>	
<b>Sec 5309 ID # if applicable:</b>		<b>Trans. Dev. Credits Awarded (Date &amp; Amount)</b>	
<b>Amendment Date &amp; Action:</b>			
<b>FY (TIP) 2010 - MPO PROJECT TOTALS</b>			<b>\$430,192.00</b>

FY 2011 TRANSIT PROJECT LIST - SECTION 5307			
WICHITA FALLS MPO TRANSPORTATION IMPROVEMENT PROGRAM			
Wichita Falls			YOE = Year of Expenditure
<b>General Project Information</b>		<b>Funding Information (YOE)</b>	
<b>Project Sponsor:</b>	WICHITA FALLS TRANSIT SYSTEM	<b>Federal Funding Category</b>	5307
<b>MPO Project Number:</b>	WF-T2011-CAP	<b>Federal Share</b>	\$205,895.00
<b>Apportionment Year:</b>	FY 2011	<b>State Funds from TxDOT</b>	
<b>Project Phase:</b>	N/A	<b>Local Funds</b>	\$51,474.00
<b>Brief Project Description:</b>	Capital Expenditures - Shop tools and equipment. Land acquisition, building demolition and architectural plans for construction of downtown transit hub.	<b>Fiscal Year Cost</b>	\$257,369.00
		<b>Total Project Cost</b>	\$257,369.00
		<b>Trans. Dev. Credits Requested</b>	
<b>Sec 5309 ID # if applicable:</b>	N/A	<b>Trans. Dev. Credits Awarded (Date &amp; Amount)</b>	
<b>Amendment Date &amp; Action:</b>			
<b>General Project Information</b>		<b>Funding Information (YOE)</b>	
<b>Project Sponsor:</b>	WICHITA FALLS TRANSIT SYSTEM	<b>Federal Funding Category</b>	5307
<b>MPO Project Number:</b>	WF-T2011-PM	<b>Federal Share</b>	\$233,972.00
<b>Apportionment Year:</b>	FY 2011	<b>State Funds from TxDOT</b>	
<b>Project Phase:</b>	N/A	<b>Local Funds</b>	\$58,493.00
<b>Brief Project Description:</b>	Preventive Maintenance	<b>Fiscal Year Cost</b>	\$292,465.00
		<b>Total Project Cost</b>	\$292,465.00
		<b>Trans. Dev. Credits Requested</b>	
<b>Sec 5309 ID # if applicable:</b>	N/A	<b>Trans. Dev. Credits Awarded (Date &amp; Amount)</b>	
<b>Amendment Date &amp; Action:</b>			
<b>General Project Information</b>		<b>Funding Information (YOE)</b>	
<b>Project Sponsor:</b>	WICHITA FALLS TRANSIT SYSTEM	<b>Federal Funding Category</b>	5307
<b>MPO Project Number:</b>	WF-T2011-OPS	<b>Federal Share</b>	\$448,135.00
<b>Apportionment Year:</b>	FY 2011	<b>State Funds from TxDOT</b>	\$299,330.00
<b>Project Phase:</b>	N/A	<b>Local Funds</b>	\$328,805.00
<b>Brief Project Description:</b>	Operating Expenditures	<b>Fiscal Year Cost</b>	\$1,076,270.00
		<b>Total Project Cost</b>	\$1,076,270.00
		<b>Trans. Dev. Credits Requested</b>	
<b>Sec 5309 ID # if applicable:</b>	N/A	<b>Trans. Dev. Credits Awarded (Date &amp; Amount)</b>	
<b>Amendment Date &amp; Action:</b>			
<b>General Project Information</b>		<b>Funding Information (YOE)</b>	
<b>Project Sponsor:</b>	WICHITA FALLS TRANSIT SYSTEM	<b>Federal Funding Category</b>	5307
<b>MPO Project Number:</b>	WF-T2011-PLG	<b>Federal Share</b>	\$28,077.00
<b>Apportionment Year:</b>	FY 2011	<b>State Funds from TxDOT</b>	
<b>Project Phase:</b>	N/A	<b>Local Funds</b>	\$7,019.00
<b>Brief Project Description:</b>	Planning Expenditures - Grant Administration, Annual Software Maintenance, & Transit Studies	<b>Fiscal Year Cost</b>	\$35,096.00
		<b>Total Project Cost</b>	\$35,096.00
		<b>Trans. Dev. Credits Requested</b>	
<b>Sec 5309 ID # if applicable:</b>	N/A	<b>Trans. Dev. Credits Awarded (Date &amp; Amount)</b>	
<b>Amendment Date &amp; Action:</b>			
<b>FY (TIP) 2011 - MPO PROJECT TOTALS</b>			<b>\$1,661,200.00</b>

**Transit Financial Summary  
Wichita Falls MPO / District**

**FY 2008 - 2011 Transportation Improvement Program**

All Figures in Year of Expenditure (YOE) Dollars									
Current as of January 27, 2010									
Transit Program									
	Federal	FY 2008 State/Local	Total	Federal	FY 2009 State/Local	Total	Federal	FY 2010 State/Local	Total
1 Sec. 5307 - Urbanized Formula >200K			0			0			0
2 Sec. 5307 - Urbanized Formula <200K	1,821,234	963,406	2,784,640	1,004,579	736,797	1,741,376	2,006,303	998,707	3,005,010
3 Sec. 5309 - Discretionary			0			0			0
4 Sec. 5310 - Elderly & Individuals w/Disabilities			0			0			0
5 Sec. 5311 - Nonurbanized Formula			0			0			0
6 Sec. 5316 - JARC >200K			0			0			0
7 Sec. 5316 - JARC <200K			0			0			0
8 Sec. 5316 - JARC Nonurbanized			0			0			0
9 Sec. 5317 - New Freedom >200K			0			0			0
10 Sec. 5317 - New Freedom <200K			0			0			0
11 Sec. 5317 - New Freedom Nonurbanized			0			0			0
12 Other FTA (2009 ARRA Funds)			0	1,340,000		1,340,000	430,192		430,192
13 Regionally Significant or Other (incl FHWA transfers)			0			0			0
<b>Total Funds</b>	<b>\$1,821,234</b>	<b>\$963,406</b>	<b>\$2,784,640</b>	<b>\$2,344,579</b>	<b>\$736,797</b>	<b>\$3,081,376</b>	<b>\$2,436,495</b>	<b>\$998,707</b>	<b>\$3,435,202</b>
Transportation Development Credits									
Requested			\$0			\$0			\$0
Awarded			\$0			\$0			\$0
All Figures in Year of Expenditure (YOE) Dollars									
Transit Program									
	Federal	FY 2011 State/Local	Total	Federal	Total	Total			
1 Sec. 5307 - Urbanized Formula >200K			0	0	0	0			
2 Sec. 5307 - Urbanized Formula <200K	916,078	745,122	1,661,200	5,748,194	3,444,032	9,192,226			
3 Sec. 5309 - Discretionary			0	0	0	0			
4 Sec. 5310 - Elderly & Individuals w/Disabilities			0	0	0	0			
5 Sec. 5311 - Nonurbanized Formula			0	0	0	0			
6 Sec. 5316 - JARC >200K			0	0	0	0			
7 Sec. 5316 - JARC <200K			0	0	0	0			
8 Sec. 5316 - JARC Nonurbanized			0	0	0	0			
9 Sec. 5317 - New Freedom >200K			0	0	0	0			
10 Sec. 5317 - New Freedom <200K			0	0	0	0			
11 Sec. 5317 - New Freedom Nonurbanized			0	0	0	0			
12 Other FTA (2009 ARRA funds)			0	1,770,192	0	1,770,192			
13 Regionally Significant or Other (incl FHWA transfers)			0	0	0	0			
<b>Total Funds</b>	<b>\$916,078</b>	<b>\$745,122</b>	<b>\$1,661,200</b>	<b>\$7,518,386</b>	<b>\$3,444,032</b>	<b>\$10,962,418</b>			
Transportation Development Credits									
Requested			\$0			\$0			
Awarded			\$0			\$0			

**YOE Total Project Cost Methodology:**

- Calculations for Year of Expenditure costs were accomplished by first establishing base year estimates for FY 2008 in all four major project areas: Capital, Preventive Maintenance, Operating Assistance and Planning.
- All Capital programming costs are based on information provided by the City of Wichita Falls Purchasing Department. This includes the projected estimated cost of new replacement buses, shop equipment and tools.
- Preventive Maintenance, Operating Assistance and Planning programming costs were calculated for each YOE by utilizing FY 2008 as the base year then multiplying by 4% per year to increase YOE incrementally.
- NOTE: Replacement buses are generally purchased two at a time every other year.

**STATE FUNDED  
HIGHWAY PROJECTS**

**STATE FUNDED HIGHWAY PROJECTS** include projects that do not receive Federal funds. These are projects that receive only State or Local funds.

The Wichita Falls FY 2008-2011 TIP does not contain any State funded highway projects.

**LOCALLY FUNDED  
REGIONALLY SIGNIFICANT  
PROJECTS**

**LOCALLY FUNDED REGIONALLY SIGNIFICANT PROJECTS** include projects that do not receive Federal or State funds. These projects only receive Local funds.

The Wichita Falls FY 2008-2011 TIP does not contain any locally funded regionally significant projects.



# **FINANCIAL PLAN**

## Wichita Falls District MPO Financial Summary

### FY 2008 - 2011 Transportation Improvement Program

Work CAT	Work Category Description	FY 2008 Programmed	FY 2009 Programmed	FY 2010 Programmed	FY 2011 Programmed	Totals Programmed
1	Preventive Maintenance & Rehabilitation					\$0
2	Metropolitan Corridor Projects					\$0
3	Urban Corridor Projects	\$34,794,131				\$34,794,131
4	Statewide Connectivity					\$0
5	CMAQ					\$0
6	Structure Rehabilitation					\$0
7	Metropolitan Mobility					\$0
8	Safety					\$0
9	Enhancements			\$2,900,000		\$2,900,000
10	Miscellaneous					\$0
11	District Discretionary	\$3,607,315				\$3,607,315
12	Strategic Priority					\$0
	<b>Total Funds</b>	<b>\$38,401,446</b>	<b>\$0</b>	<b>\$2,900,000</b>	<b>\$0</b>	<b>\$41,301,446</b>

**ANNUAL**

**SELF-CERTIFICATION**

**MPO SELF-CERTIFICATION**

In accordance with 23 CFR Part 450.334 and 450.220 of the Safe, Accountable, Flexible, Efficient Transportation Equity Act: A Legacy for Users, the Texas Department of Transportation, and the Wichita Falls Metropolitan Planning Organization for the Wichita Falls urbanized area(s) hereby certify that the transportation planning process is addressing the major issues in the metropolitan planning area and is being conducted in accordance with all applicable requirements of:

- (1) 23 U.S.C. 134, 49 U.S.C. 5303, and this subpart;
- (2) Title VI of the Civil Rights Act of 1964, as amended (42 U.S.C. 2000d-1) and 49 CFR part 21;
- (3) 49 U.S.C. 5332, prohibiting discrimination on the basis of race, color, creed, national origin, sex, or age in employment or business opportunity;
- (4) Section 1101(b) of the SAFETEA-LU (Pub. L. 109-59) and 49 CFR part 26 regarding the involvement of disadvantaged business enterprises in USDOT funded projects;
- (5) 23 CFR part 230, regarding the implementation of an equal employment opportunity program on Federal and Federal-aid highway construction contracts;
- (6) The provisions of the Americans with Disabilities Act of 1990 (42 U.S.C. 12101 et seq.) and 49 CFR parts 27, 37, and 38;
- (7) The Older Americans Act, as amended (42 U.S.C. 6101), prohibiting discrimination on the basis of age in programs or activities receiving Federal financial assistance;
- (8) Section 324 of title 23 U.S.C. regarding the prohibition of discrimination based on gender; and
- (9) Section 504 of the Rehabilitation Act of 1973 (29 U.S.C. 794) and 49 CFR part 27 regarding discrimination against individuals with disabilities.

\_\_\_\_\_  
Wichita Falls  
District  
Texas Department of Transportation

\_\_\_\_\_  
District Engineer

\_\_\_\_\_  
Date

\_\_\_\_\_  
Wichita Falls  
Metropolitan Planning Organization  
Policy Board Chairperson

\_\_\_\_\_  
Chairperson

\_\_\_\_\_  
Date

**APPENDIX A  
STATEWIDE GROUPED  
CSJ HIGHWAY PROJECTS**

**WICHITA FALLS MPO - STATEWIDE GROUPED CSJ HIGHWAY PROJECTS  
TRANSPORTATION IMPROVEMENT PROGRAM (TIP)**

**FY 2008 Projects by State Category**

DISTRICT	COUNTY	CSJ#	HWY	EST LET DATE	PHASE	CITY	TIP/MTP PROJ ID	EST COST
WICHITA FALLS	WICHITA	0156-03-044	SH 240	2/2008	C,E	WICHITA FALLS	N/A	Constrained
LIMITS FROM:	WICHITA RIVER					FUND CATEGORY:	1 - PRVNT MNT/REHAB	Statewide
LIMITS TO:	BUS 287J					REV DATE:		
DESCRIPTION:	NOVACHIP					OTHER CATEGORIES:		
DESCRIPTION:						LOCAL CONTRIBUTION:		
REMARKS:						STATEWIDE CSJ:	5000-00-958	
WICHITA FALLS	WICHITA	0249-01-038	LP 473	2/2008	C,E	WICHITA FALLS	N/A	Constrained
LIMITS FROM:	US 82/US 287					FUND CATEGORY:	1 - PRVNT MNT/REHAB	Statewide
LIMITS TO:	BUS 287J					REV DATE:		
DESCRIPTION:	NOVACHIP					OTHER CATEGORIES:		
DESCRIPTION:						LOCAL CONTRIBUTION:		
REMARKS:						STATEWIDE CSJ:	5000-00-958	
WICHITA FALLS	WICHITA	0685-01-025	SP 325	2/2008	C,E	WICHITA FALLS	N/A	Constrained
LIMITS FROM:	INTERCHANGE					FUND CATEGORY:	1 - PRVNT MNT/REHAB	Statewide
LIMITS TO:	SH 240					REV DATE:		
DESCRIPTION:	NOVACHIP					OTHER CATEGORIES:		
DESCRIPTION:						LOCAL CONTRIBUTION:		
REMARKS:						STATEWIDE CSJ:	5000-00-958	
WICHITA FALLS	WICHITA	0043-09-111	US 287	9/2007	C,E	WICHITA FALLS	NA	Constrained
LIMITS FROM:	NEAR LOOP 11					FUND CATEGORY:	11 - DIST DISCRETION	Statewide
LIMITS TO:	US 287 (SB) AND IH 44 (WEST) MERGE					REV DATE:		
DESCRIPTION:	RELOCATE ENTRANCE RAMP					OTHER CATEGORIES:		
DESCRIPTION:	ENTRANCE RAMP RELOCATION AND FREEWAY WIDENING					LOCAL CONTRIBUTION:		
REMARKS:						STATEWIDE CSJ:	5000-00-958	
WICHITA FALLS	WICHITA	0156-07-101	IH 44	9/2007	C,E	WICHITA FALLS	WFS BR-4	Constrained
LIMITS FROM:	AT FM 890					FUND CATEGORY:	6 - REHAB/11-DIST.DISC.	Statewide
LIMITS TO:						REV DATE:		
DESCRIPTION:	REPLACE BRIDGE AND APPROACHES					OTHER CATEGORIES:		
DESCRIPTION:						LOCAL CONTRIBUTION:		
REMARKS:						STATEWIDE CSJ:	5000-00-953	

**FY 2008 – MPO PROJECT TOTALS FOR WICHITA FALLS:**

# WICHITA FALLS MPO - STATEWIDE GROUPED CSJ HIGHWAY PROJECTS TRANSPORTATION IMPROVEMENT PROGRAM (TIP)

## FY 2008 Projects by State Category

DISTRICT	COUNTY	CSJ#	HWY	EST LET DATE	PHASE	CITY	TIP/MTP PROJ ID	EST COST
WICHITA FALLS	WICHITA	0156-12-018	SP 447	5/2008	C,E	WICHITA FALLS	N/A	Constrained
LIMITS FROM:	SP 447 AT BUS 287J (SCOTT STREET)					FUND CATEGORY:	8 - SAFETY/11 - DIST. DISC.	Statewide
LIMITS TO:						REV DATE:		
DESCRIPTION:	MISC. CONSTRUCTION					OTHER CATEGORIES:		
DESCRIPTION:	UPGRADE TRAFFIC SIGNALS					LOCAL CONTRIBUTION:		
REMARKS:						STATEWIDE CSJ:	5800-00-950	
WICHITA FALLS	WICHITA	0903-03-086	CS	6/2008	C,E	WICHITA FALLS	N/A	Constrained
LIMITS FROM:	ON BARNETT RD, AT JOHNSON RD.					FUND CATEGORY:	8 - SAFETY	Statewide
LIMITS TO:						REV DATE:		
DESCRIPTION:	MISC. CONSTRUCTION					OTHER CATEGORIES:		
DESCRIPTION:	INSTALL TRAFFIC SIGNALS					LOCAL CONTRIBUTION:		
REMARKS:						STATEWIDE CSJ:	5800-00-950	
WICHITA FALLS	WICHITA	0903-03-087	CS	6/2008	C,E	WICHITA FALLS	N/A	Constrained
LIMITS FROM:	ON MIDWESTERN PKWY FROM JACKSBORO					FUND CATEGORY:	8 - SAFETY	Statewide
LIMITS TO:	HENRY S GRACE FREEWAY					REV DATE:		
DESCRIPTION:	MISC. CONSTRUCTION					OTHER CATEGORIES:		
DESCRIPTION:	SAFETY TREAT FIXED OBJECTS (BREAKAWAY LIGHT POLES)					LOCAL CONTRIBUTION:		
REMARKS:						STATEWIDE CSJ:	5800-00-950	
WICHITA FALLS	WICHITA	0903-03-088	CS	6/2008	C,E	WICHITA FALLS	N/A	Constrained
LIMITS FROM:	ON KEMP STREET FROM MAPLEWOOD AVE.					FUND CATEGORY:	8 - SAFETY	Statewide
LIMITS TO:	WESTGATE					REV DATE:		
DESCRIPTION:	MISC. CONSTRUCTION					OTHER CATEGORIES:		
DESCRIPTION:	SAFETY TREAT FIXED OBJECTS (BREAKAWAY LIGHT POLES)					LOCAL CONTRIBUTION:		
REMARKS:						STATEWIDE CSJ:	5000-00-957	
WICHITA FALLS	WICHITA	0903-03-089	CS	6/2008	C,E	WICHITA FALLS	N/A	Constrained
LIMITS FROM:	ON TAFT FROM MIDWESTERN PKWY					FUND CATEGORY:	8 - SAFETY	Statewide
LIMITS TO:	FM 369					REV DATE:		
DESCRIPTION:	MISC. CONSTRUCTION					OTHER CATEGORIES:		
DESCRIPTION:	SAFETY TREAT FIXED OBJECTS (BREAKAWAY LIGHT POLES)					LOCAL CONTRIBUTION:		
REMARKS:						STATEWIDE CSJ:	5800-00-950	

**FY 2008 – MPO PROJECT TOTALS FOR WICHITA FALLS:**

**WICHITA FALLS MPO - STATEWIDE GROUPED CSJ HIGHWAY PROJECTS  
TRANSPORTATION IMPROVEMENT PROGRAM (TIP)**

**FY 2008 Projects by State Category**

DISTRICT	COUNTY	CSJ#	HWY	EST LET DATE	PHASE	CITY	TIP/MTP PROJ ID	EST COST
WICHITA FALLS	WICHITA	0043-17-026	BU 287J	3/2008	C,E	WICHITA FALLS	N/A	Constrained
LIMITS FROM:	AT MIDDLE FORK POND CREEK					FUND CATEGORY:	6 - REHAB	Statewide
LIMITS TO:						REV DATE:		
DESCRIPTION:	REPLACE BRIDGE AND APPROACHES					OTHER CATEGORIES:		
DESCRIPTION:	REPLACE BRIDGE AND APPROACHES					LOCAL CONTRIBUTION:		
REMARKS:						STATEWIDE CSJ:	5000-00-953	
WICHITA FALLS	WICHITA	0903-03-078	CR	3/2008	C,E	WICHITA FALLS	N/A	Constrained
LIMITS FROM:	CR 228 (HORSESHOE LAKE RD) AT WEST					FUND CATEGORY:	6 - REHAB	Statewide
LIMITS TO:	FORK POND CREEK					REV DATE:		
DESCRIPTION:	REPLACE BRIDGE AND APPROACHES					OTHER CATEGORIES:		
DESCRIPTION:	REPLACE BRIDGE AND APPROACHES					LOCAL CONTRIBUTION:		
REMARKS:						STATEWIDE CSJ:	5000-00-953	
WICHITA FALLS	WICHITA	0903-03-079	CR	3/2008	C,E	WICHITA FALLS	N/A	Constrained
LIMITS FROM:	CR 228 (HORSESHOE LAKE RD) AT NORTH					FUND CATEGORY:	6 - REHAB	Statewide
LIMITS TO:	SIDE CANAL					REV DATE:		
DESCRIPTION:	REPLACE BRIDGE AND APPROACHES					OTHER CATEGORIES:		
DESCRIPTION:	REPLACE BRIDGE AND APPROACHES					LOCAL CONTRIBUTION:		
REMARKS:						STATEWIDE CSJ:	5000-00-953	
WICHITA FALLS	WICHITA	0903-03-080	CR	3/2008	C,E	WICHITA FALLS	N/A	Constrained
LIMITS FROM:	CR 339 (DOVE LANE) AT DRAW					FUND CATEGORY:	6 - REHAB	Statewide
LIMITS TO:						REV DATE:		
DESCRIPTION:	REPLACE BRIDGE AND APPROACHES					OTHER CATEGORIES:		
DESCRIPTION:	REPLACE BRIDGE AND APPROACHES					LOCAL CONTRIBUTION:		
REMARKS:						STATEWIDE CSJ:	5000-00-953	
WICHITA FALLS						WICHITA FALLS		Constrained
LIMITS FROM:						FUND CATEGORY:		Statewide
LIMITS TO:						REV DATE:		
DESCRIPTION:						OTHER CATEGORIES:		
DESCRIPTION:						LOCAL CONTRIBUTION:		
REMARKS:						STATEWIDE CSJ:		

**FY 2008 – MPO PROJECT TOTALS FOR WICHITA FALLS:**



**WICHITA FALLS MPO - STATEWIDE GROUPED CSJ HIGHWAY PROJECTS  
TRANSPORTATION IMPROVEMENT PROGRAM (TIP)**

**FY 2009 Projects by State Category**

DISTRICT	COUNTY	CSJ#	HWY	EST LET DATE	PHASE	CITY	TIP/MTP PROJ ID	EST COST
WICHITA FALLS	WICHITA	0156-04-901	US 82	01/2009	C,E	WICHITA FALLS	N/A	CONSTRAINED
LIMITS FROM:	ON FRONTAGE ROADS; FROM FM 369					FUND CATEGORY:	1-PM/REHAB	STATEWIDE
LIMITS TO:	US 287					REV DATE:	02/2008	
DESCRIPTION:	CONCRETE PATCH REPAIR					OTHER CATEGORIES:		
DESCRIPTION:						LOCAL CONTRIBUTION:		
REMARKS:						STATEWIDE CSJ:	5000-00-952	
WICHITA FALLS	WICHITA	0903-00-949	VA	03/2009	C	WICHITA FALLS	N/A	CONSTRAINED
LIMITS FROM:	VARIOUS LOCATIONS DISTRICT WIDE					FUND CATEGORY:	1-PM/REHAB	STATEWIDE
LIMITS TO:						REV DATE:	02/2008	
DESCRIPTION:	BRIDGE MAINTENANCE AND REPAIR					OTHER CATEGORIES:		
DESCRIPTION:						LOCAL CONTRIBUTION:		
REMARKS:						STATEWIDE CSJ:	5000-00-953	
WICHITA FALLS	WICHITA	0044-01-941	US 287	01/2009	C,E	WICHITA FALLS	N/A	CONSTRAINED
LIMITS FROM:	ON FRONTAGE ROADS; FROM US 82/277					FUND CATEGORY:	1-PM/REHAB	STATEWIDE
LIMITS TO:	MCKINNEY ROAD					REV DATE:	02/2008	
DESCRIPTION:	REHABILITATION OF EXISTING ROADWAY					OTHER CATEGORIES:		
DESCRIPTION:	CONCRETE PATCH REPAIR					LOCAL CONTRIBUTION:		
REMARKS:						STATEWIDE CSJ:	5000-00-952	
WICHITA FALLS	WICHITA	0249-01-943	US 281	01/2009	C,E	WICHITA FALLS	N/A	CONSTRAINED
LIMITS FROM:	ON FRONTAGE ROADS; FROM LP 473					FUND CATEGORY:	1-PM/REHAB	STATEWIDE
LIMITS TO:	RATHGEBER ROAD					REV DATE:	02/2008	
DESCRIPTION:	REHABILITATION OF EXISTING ROADWAY					OTHER CATEGORIES:		
DESCRIPTION:	CONCRETE PATCH REPAIR					LOCAL CONTRIBUTION:		
REMARKS:						STATEWIDE CSJ:	5000-00-952	
WICHITA FALLS	WICHITA	0283-06-942	SH 79	01/2009	C,E	WICHITA FALLS	N/A	CONSTRAINED
LIMITS FROM:	US 281 / SH 79					FUND CATEGORY:	1-PM/REHAB	STATEWIDE
LIMITS TO:	0.1 MILE NORTH OF PROFESSIONAL DRIVE					REV DATE:	02/2008	
DESCRIPTION:	REHABILITATION OF EXISTING ROADWAY					OTHER CATEGORIES:		
DESCRIPTION:	CONCRETE PATCH REPAIR					LOCAL CONTRIBUTION:		
REMARKS:						STATEWIDE CSJ:	5000-00-952	

**FY 2009 – MPO PROJECT TOTALS FOR WICHITA FALLS:**

**WICHITA FALLS MPO - STATEWIDE GROUPED CSJ HIGHWAY PROJECTS  
TRANSPORTATION IMPROVEMENT PROGRAM (TIP)**

**FY 2009 Projects by State Category**

DISTRICT	COUNTY	CSJ#	HWY	EST LET DATE	PHASE	CITY	TIP/MTP PROJ ID	EST COST
WICHITA FALLS	WICHITA	0156-14-027	BU 277A	3/2009	C,E	WICHITA FALLS	N/A	CONSTRAINED
LIMITS FROM:	LOOP 11					FUND CATEGORY:	4-ST.WIDE CONNECT	STATEWIDE
LIMITS TO:	BROOK STREET					REV DATE:	5/2009	
DESCRIPTION:	ASPHALTIC CONCRETE PAVEMENT OVERLAY					OTHER CATEGORIES:		
DESCRIPTION:	ULTRA THIN BONDED HOT MIX WEARING COURSE (UTBHMWC)					LOCAL CONTRIBUTION:		
REMARKS:						STATEWIDE CSJ:	5000-00-952	
WICHITA FALLS						WICHITA FALLS		
LIMITS FROM:						FUND CATEGORY:		
LIMITS TO:						REV DATE:		
DESCRIPTION:						OTHER CATEGORIES:		
DESCRIPTION:						LOCAL CONTRIBUTION:		
REMARKS:						STATEWIDE CSJ:		
WICHITA FALLS						WICHITA FALLS		
LIMITS FROM:						FUND CATEGORY:		
LIMITS TO:						REV DATE:		
DESCRIPTION:						OTHER CATEGORIES:		
DESCRIPTION:						LOCAL CONTRIBUTION:		
REMARKS:						STATEWIDE CSJ:		
WICHITA FALLS						WICHITA FALLS		
LIMITS FROM:						FUND CATEGORY:		
LIMITS TO:						REV DATE:		
DESCRIPTION:						OTHER CATEGORIES:		
DESCRIPTION:						LOCAL CONTRIBUTION:		
REMARKS:						STATEWIDE CSJ:		
WICHITA FALLS						WICHITA FALLS		
LIMITS FROM:						FUND CATEGORY:		
LIMITS TO:						REV DATE:		
DESCRIPTION:						OTHER CATEGORIES:		
DESCRIPTION:						LOCAL CONTRIBUTION:		
REMARKS:						STATEWIDE CSJ:		

**FY 2009 – MPO PROJECT TOTALS FOR WICHITA FALLS:**

**WICHITA FALLS MPO - STATEWIDE GROUPED CSJ HIGHWAY PROJECTS  
TRANSPORTATION IMPROVEMENT PROGRAM (TIP)  
FY 2010 Projects by State Category**

DISTRICT	COUNTY	CSJ#	HWY	EST LET DATE	PHASE	CITY	TIP/MTP PROJ ID	EST COST
WICHITA FALLS	WICHITA	0043-09-112	IH 44	09/2009	C,E	WICHITA FALLS	N/A	CONSTRAINED
LIMITS FROM:	NEAR MAURINE STREET					FUND CATEGORY:	11-DIST. DISC.	STATEWIDE
LIMITS TO:	US 287 (SB)/IH 44 (WEST) MERGE					REV DATE:	02/2008	
DESCRIPTION:	ENTRANCE RAMP RELOCATION AND FREEWAY WIDENING					OTHER CATEGORIES:		
DESCRIPTION:						LOCAL CONTRIBUTION:		
REMARKS:						STATEWIDE CSJ:	5000-00-952	
WICHITA FALLS	WICHITA	0043-09-914	IH 44	09/2009	C,E	WICHITA FALLS	N/A	CONSTRAINED
LIMITS FROM:	IH 44/US 287/SP 325 INTERCHANGE					FUND CATEGORY:	1-PM/REHAB	STATEWIDE
LIMITS TO:	WICHITA RIVER					REV DATE:	02/2008	
DESCRIPTION:	FULL DEPTH REPAIR OF CONCRETE PAVEMENT					OTHER CATEGORIES:		
DESCRIPTION:						LOCAL CONTRIBUTION:		
REMARKS:						STATEWIDE CSJ:	5000-00-952	
WICHITA FALLS	WICHITA	0156-14-909	BUS 277A	12/2009	C,E	WICHITA FALLS	N/A	CONSTRAINED
LIMITS FROM:	LP 11					FUND CATEGORY:	1-PM/REHAB	STATEWIDE
LIMITS TO:	IH 44					REV DATE:	02/2008	
DESCRIPTION:	OVERLAY					OTHER CATEGORIES:		
DESCRIPTION:						LOCAL CONTRIBUTION:		
REMARKS:						STATEWIDE CSJ:	5000-00-952	
WICHITA FALLS						WICHITA FALLS		
LIMITS FROM:						FUND CATEGORY:		
LIMITS TO:						REV DATE:		
DESCRIPTION:						OTHER CATEGORIES:		
DESCRIPTION:						LOCAL CONTRIBUTION:		
REMARKS:						STATEWIDE CSJ:		
WICHITA FALLS						WICHITA FALLS		
LIMITS FROM:						FUND CATEGORY:		
LIMITS TO:						REV DATE:		
DESCRIPTION:						OTHER CATEGORIES:		
DESCRIPTION:						LOCAL CONTRIBUTION:		
REMARKS:						STATEWIDE CSJ:		

**FY 2010 – MPO PROJECT TOTALS FOR WICHITA FALLS:**

**WICHITA FALLS MPO - STATEWIDE GROUPED CSJ HIGHWAY PROJECTS  
TRANSPORTATION IMPROVEMENT PROGRAM (TIP)**

**FY 2011 Projects by State Category**

DISTRICT	COUNTY	CSJ#	HWY	EST LET DATE	PHASE	CITY	TIP/MTP PROJ ID	EST COST
WICHITA FALLS	WICHITA	0043-09-916	US 287	12/2010	C,E	WICHITA FALLS	N/A	CONSTRAINED
LIMITS FROM:	IH 44/US 287/SP 325 INTERCHANGE					FUND CATEGORY:	1-PM/REHAB	STATEWIDE
LIMITS TO:	FM 368					REV DATE:	02/2008	
DESCRIPTION:	NOVACHIP					OTHER CATEGORIES:		
DESCRIPTION:						LOCAL CONTRIBUTION:		
REMARKS:						STATEWIDE CSJ:	5000-00-952	
WICHITA FALLS						WICHITA FALLS		
LIMITS FROM:						FUND CATEGORY:		
LIMITS TO:						REV DATE:		
DESCRIPTION:						OTHER CATEGORIES:		
DESCRIPTION:						LOCAL CONTRIBUTION:		
REMARKS:						STATEWIDE CSJ:		
WICHITA FALLS						WICHITA FALLS		
LIMITS FROM:						FUND CATEGORY:		
LIMITS TO:						REV DATE:		
DESCRIPTION:						OTHER CATEGORIES:		
DESCRIPTION:						LOCAL CONTRIBUTION:		
REMARKS:						STATEWIDE CSJ:		
WICHITA FALLS						WICHITA FALLS		
LIMITS FROM:						FUND CATEGORY:		
LIMITS TO:						REV DATE:		
DESCRIPTION:						OTHER CATEGORIES:		
DESCRIPTION:						LOCAL CONTRIBUTION:		
REMARKS:						STATEWIDE CSJ:		
WICHITA FALLS						WICHITA FALLS		
LIMITS FROM:						FUND CATEGORY:		
LIMITS TO:						REV DATE:		
DESCRIPTION:						OTHER CATEGORIES:		
DESCRIPTION:						LOCAL CONTRIBUTION:		
REMARKS:						STATEWIDE CSJ:		

**FY 2011 – MPO PROJECT TOTALS FOR WICHITA FALLS:**