

# **Wichita Falls Metropolitan Planning Organization**

## **FY 2013 – FY 2016 Transportation Improvement Program**

**Prepared by:  
Wichita Falls Metropolitan Planning Organization**

**Participating Agencies:**

**City of Wichita Falls  
City of Pleasant Valley  
City of Lakeside City  
Wichita County  
Archer County  
Texas Department of Transportation  
Wichita Falls Transit System**

**In cooperation with:**

**U.S. Department of Transportation  
Federal Highway Administration  
Federal Transit Administration**

**Public Meeting Dates: *May 8 & May 10, 2012***

**Approved by Transportation Policy Committee: *June 4, 2012***

**Amended by Transportation Policy Committee: *October 24, 2012; October 30, 2013; April 23, 2014***

# TABLE OF CONTENTS

<b>SECTION I. INTRODUCTION/BACKGROUND .....</b>	<b>3</b>
<b>A. METROPOLITAN PLANNING ORGANIZATON.....</b>	<b>3</b>
<b>B. PURPOSE OF THE TRANSPORTATION IMPROVEMENT PROGRAM (TIP) .....</b>	<b>3</b>
<b>C. LEGAL REQUIREMENTS AFFECTING THE TIP .....</b>	<b>4</b>
<b>D. DEFINITION OF PLANNING AREA.....</b>	<b>6</b>
<b>E. PUBLIC INVOLVEMENT PROCESS .....</b>	<b>8</b>
<b>F. PROJECT SELECTION PROCESS .....</b>	<b>8</b>
<b>G. PROGRESS FROM PREVIOUS YEARS .....</b>	<b>8</b>
<b>H. AIR QUALITY ISSUES .....</b>	<b>9</b>
<b>I. AMERICANS WITH DISABILITIES ACT (ADA) .....</b>	<b>9</b>
<b>J. ENVIRONMENTAL JUSTICE.....</b>	<b>10</b>
<b>K. TOTAL PROJECT COST AND YEAR OF EXPENDITURE DOLLARS.....</b>	<b>10</b>
<b>SECTION II. GLOSSARY.....</b>	<b>12</b>
<b>A. PROJECT LISTINGS .....</b>	<b>12</b>
<b>B. GROUPED PROJECT CSJ DEFINITION AND FUNDING .....</b>	<b>14</b>
<b>SECTION III - FEDERALLY FUNDED MOBILITY (HIGHWAY) PROJECTS .....</b>	<b>15</b>
<b>SECTION IV - STATE FUNDED HIGHWAY PROJECTS .....</b>	<b>17</b>
<b>SECTION V - LOCALLY FUNDED REGIONALLY SIGNIFICANT PROJECTS.....</b>	<b>19</b>
<b>SECTION VI - FEDERALLY FUNDED TRANSIT PROJECTS.....</b>	<b>22</b>
<b>SECTION VII - ANNUAL MPO SELF-CERTIFICATION.....</b>	<b>31</b>

## TABLES AND FIGURES

TABLE 1 – PROGRESS FROM PREVIOUS YEARS.....	9
TABLE 2 - GROUPED CSJ DEFINITION AND FUNDING .....	14
FIGURE 1 – MPO BOUNDARY MAP.....	7
FIGURE 2 – 2013-2016 TIP PROJECT LOCATION MAP .....	16

## **SECTION I. INTRODUCTION/BACKGROUND**

### **A. METROPOLITAN PLANNING ORGANIZATION**

The Federal Aid Highway Act of 1962 established the “3C’s Concept” of transportation planning that encouraged a continuing, comprehensive planning process carried on cooperatively by states and local communities from each urban area of more than fifty thousand population. The City of Wichita Falls conducted the first transportation planning survey of its kind in 1964 under the designation Wichita Falls Urban Transportation Plan, Volume 1, Origin-Destination Survey. In 1967, the City of Wichita Falls signed an agreement with the State of Texas that established overall transportation policy guidance for the Wichita Falls Metropolitan Area by creating the Policy Advisory Committee (PAC). In 1973, the State revised the agreement with the City of Wichita Falls in order to establish the Technical Advisory Committee (TAC). The Technical Advisory Committee provided support to the Policy Advisory Committee and helped the Policy Board make informed transportation policy decisions for the Wichita Falls Metropolitan Area.

Transportation Planning for the Wichita Falls Metropolitan Area formally began at the City of Wichita Falls in 1973 when the Governor of the State of Texas, acting by, and through the State Department of Highways and Public Transportation designated the City of Wichita Falls, acting through its Policy Advisory Committee, to be the Metropolitan Planning Organization (MPO) for the Wichita Falls Urban Transportation Study Area. This designation changed in June 2000 and replaced the Policy Advisory Committee (PAC) with the Transportation Policy Committee (TPC), which is now the designated Metropolitan Planning Organization. The Technical Advisory Committee continues to support the Transportation Policy Committee in their policy-making decisions.

### **B. PURPOSE OF THE TRANSPORTATION IMPROVEMENT PROGRAM (TIP)**

The United States Department of Transportation through the Federal Highway Administration and the Federal Transit Administration requires the development of a Transportation Improvement Program (TIP). The TIP is a staged, multiyear program of projects proposed for funding by federal, state, and local sources within the Wichita Falls Metropolitan Area. The 2013-2016 TIP identifies roadway and transit projects programmed for construction within the next four years inside the Wichita Falls Metropolitan Area. The Wichita Falls MPO (WFMPO) in cooperation with the local governments of the City of Wichita Falls, the City of Lakeside City, the City of Pleasant Valley, Archer County, Wichita County, the Texas Department of Transportation, and the Wichita Falls Transit System developed the 2013-2016 TIP. The Wichita Falls MPO developed the TIP in accordance with the metropolitan planning requirements set forth in the Statewide and Metropolitan Planning Final Rule 23 CFR Part 450 (Federal Register / Vol. 72, No. 30 / Pg. 7261) and 49 CFR Part 613 (Federal Register / Vol. 72, No. 30 / Pg. 7285) as required by the Intermodal Surface Transportation Efficiency Act of 1991 (ISTEA), which was reauthorized as the Transportation Equity Act for the 21<sup>st</sup> Century (TEA-21), and was again reauthorized as the Safe, Accountable, Flexible, Efficient Transportation Equity Act: A Legacy for Users (SAFETEA-LU), which expired on February 28, 2010. As of this writing, Congress continues to pass continuing resolutions of SAFETEA-LU in order to fund transportation projects, planning agencies, and their programs. Congress is expected to produce a new transportation reauthorization bill to supersede SAFETEA-LU by the end of 2010 or early 2011. The WFMPO prepared the 2013-2016 TIP under the guidelines set forth in the Code of Federal Regulations (referenced above) as updated on February 14, 2007 in the Federal Register, and as prescribed in SAFETEA-LU.

SAFETEA-LU (Safe, Accountable, Flexible, Efficient Transportation Equity Act: A Legacy for Users) was enacted on August 10, 2005 and requires the Metropolitan Planning Organizations (MPO) to provide for consideration of projects and strategies that will serve to advance eight (8) transportation planning factors. Those factors are as follows:

1. Support Economic Vitality of the metropolitan area, especially by enabling global, competitiveness, productivity, and efficiency.
2. Increase safety of transportation system for motorized and non-motorized users.
3. Increase the security of transportation system for motorized and non-motorized users.
4. Increase the accessibility and mobility of people and freight.
5. Protect and enhance the environment, promote energy conservation, improve the quality of life, and promote consistency between transportation improvements and State and local planned growth and economic development patterns.
6. Enhance the integration and connectivity of the transportation system, across and between modes, for people and freight.
7. Promote efficient system management and operation.
8. Emphasize the preservation of the existing transportation system.

WFMPO addressed these eight planning factors in detail in Chapter 4 – Vision, Goals, and Objectives [SAFETEA-LU Addendum] of the 2005-2030 Metropolitan Transportation Plan. In Section 1 Introduction/Goals and Objectives of the 2010-2035 update of the Metropolitan Transportation Plan, the WFMPO developed enabling goals and objectives that will continue to support and advance the eight transportation planning factors of SAFETEA-LU. It is important for the Wichita Falls Metropolitan Area to comply with any new trends in program management and funding mechanisms so it can continue to build a transportation system supported by state and federal agencies and funding sources. The 2010-2035 Metropolitan Transportation Plan (MTP) takes existing policies and best estimates future ones to create goals, objectives, and strategies that are visionary, yet achievable. The 2010-2035 MTP goals and objectives take into account policy directions from SAFETEA-LU, national trends in transportation, state policies, and local initiatives.

### **C. LEGAL REQUIREMENTS AFFECTING THE TIP**

SAFETEA-LU and the Federal Transit Act describe the requirements of the TIP in general terms. Requirements that are more specific are contained in the Statewide and Metropolitan Planning Rules contained in 23 CFR Part 450 and 49 CFR Part 613. This section summarizes those requirements and describes the methods through which they are accomplished.

All roadway and transit projects receiving U.S. Department of Transportation funding under Title 23 U.S.C. – The Federal-Aid Highway Act and Title 49 U.S.C. – The Federal Transit Act must be financially constrained, and listed, in the TIP. The WFMPO initiated all proposed projects in this document in a manner consistent with the federal guidelines found in Section 450, Subpart B of the Title 23 Code of Federal Regulations and in Section 613, Subpart B of the Title 49 Code of Federal Regulations.

Federal regulations mandate that the metropolitan transportation planning process must include development of a TIP for the metropolitan planning area by the MPO, in cooperation with the State Department of Transportation, local governments, and public transportation authorities. WFMPO outlines below a brief discussion of how it complied with the specific requirements of the TIP.

- **The TIP must be updated at least every four years.**

The current policy of the WFMPO is to update the TIP for the Wichita Falls Metropolitan Area on a quarterly cycle as project implementation costs, schedules, and scopes change, and as the MPO identify new projects through funding initiatives. WFMPO will make all refinements to the TIP in coordination with TxDOT, the Wichita Falls Transit System, and counties and local governments inside the Wichita Falls Metropolitan Area.

- **In nonattainment and maintenance areas for transportation-related pollutants, the Federal Highway Administration (FHWA) and the Federal Transit Administration (FTA), as well as the MPO, must make a conformity determination on any new or amended TIP's (unless the amendment consists of exempt projects).**

According to the U.S. Environmental Protection Agency, the Wichita Falls Metropolitan Area qualifies as an "air attainment" area. The quality of the air in Wichita Falls is good. Therefore, WFMPO is not required to make a conformity determination on any of the projects listed in the TIP.

- **There must be reasonable opportunity for public comment.**

On July 25, 2007, the Transportation Policy Committee adopted the WFMPO Public Participation Plan, which meets the requirements mandated by federal law. WFMPO held regular, supplemental, and other applicable public meetings throughout the 2013-2016 TIP development process in accordance with this policy and federal law. [Section I, Part E. Public Involvement Process](#) describes the process followed in the development of the 2011-2014 TIP.

- **The TIP shall cover a period of not less than four years, but may cover a longer period if it identifies priorities and financial information for the additional years.**

In accordance with federal guidelines, the WFMPO 2013-2016 TIP identifies roadway and transit projects programmed within the next four years. WFMPO programs only those projects in the years for which federal and state funding can be committed or reasonably expected for each category.

- **The TIP shall be financially constrained by year and include a financial plan that demonstrates which projects can be implemented using current revenue sources and which projects are to be implemented using proposed revenue sources.**

The 2013-2016 TIP is financially constrained by category for the first four years of the TIP as required by federal regulation. WFMPO has identified and listed the projects in the four-year financial plan in Sections [III](#), [IV](#), [V](#), and [VII](#).

- **The TIP shall include projects as required by federal regulation.**

According to the Metropolitan and Statewide Planning Regulations (23 CFR Section 450.324(c)), the TIP shall include all transportation projects or identified phases of a project, within the metropolitan area, proposed for funding under Title 23, U.S.C. The Federal Aid Highway Act, and Title 49 the Federal Transit Act. The TIP shall also include all regionally significant transportation projects scheduled for implementation with federal, state, or local funds consistent with the Metropolitan Transportation Plan.

Detailed project listings are included in Sections [III](#), [IV](#), [V](#), and [VII](#) of this document. Information included in the project description includes: sufficient descriptive material to identify the location of the project, the type of work to be performed, estimated total cost, amount of committed federal funds for each program year, proposed funding source, and identification of the funding recipient and state and local agencies responsible for carrying out the project.

- **In nonattainment and maintenance areas, projects included shall be specified in sufficient detail to permit air quality conformity analysis.**

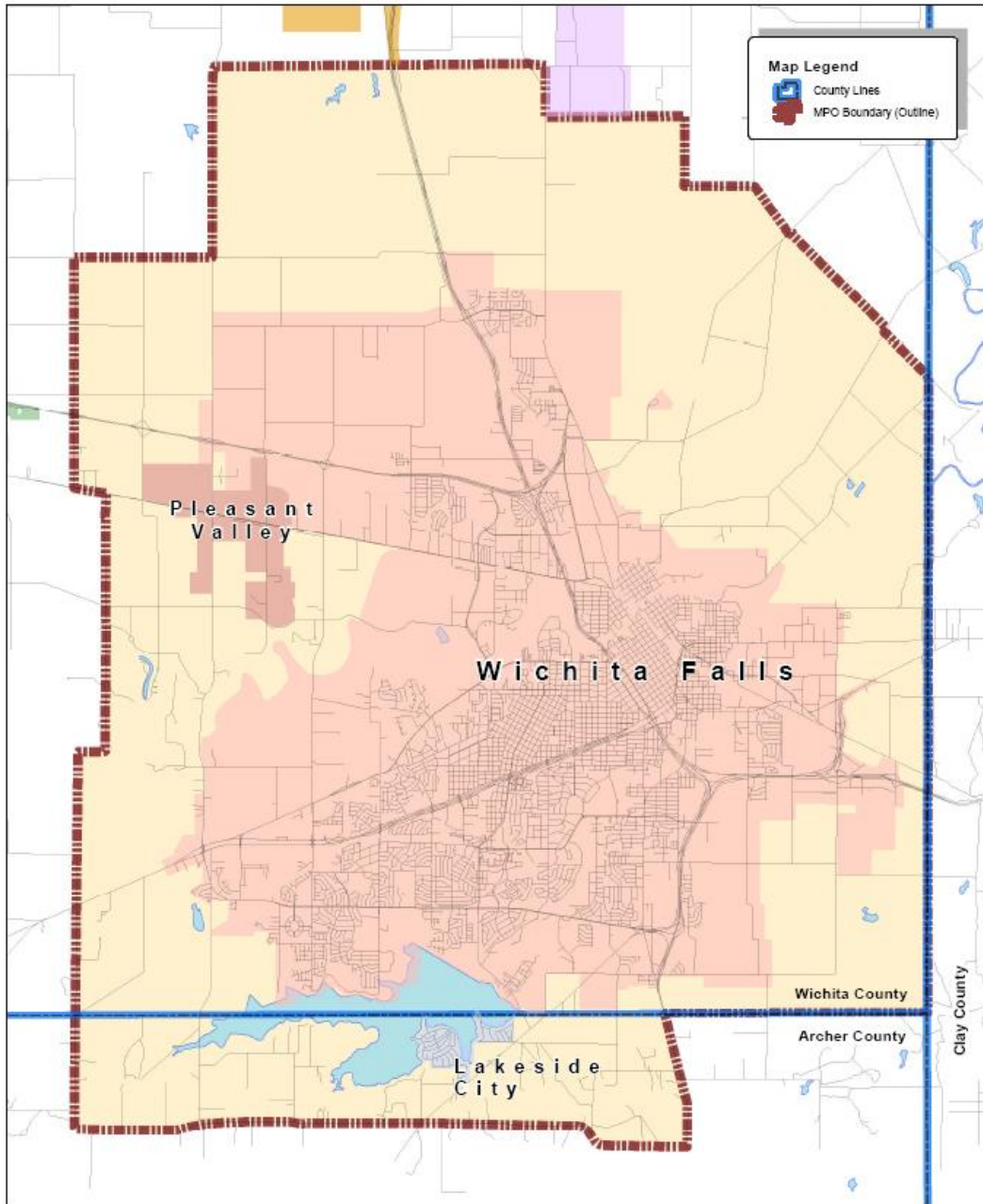
As stated in the second bullet above, the Wichita Falls Metropolitan Area is an “air attainment” area. At this time, the WFMPO is not required to perform air quality analysis on the projects listed in the TIP. However, if the Wichita Falls Metropolitan Area became a nonattainment area then the WFMPO would have to provide the design concept, or type of facility identified for each project contained in the project listings in Sections [III](#), [IV](#), [V](#), and [VII](#). The design scope identifies the design aspects that will affect the projects' impact on regional emissions, such as the number of lanes or tracks to be constructed, length of project, signalization, access control, etc.

#### **D. DEFINITION OF PLANNING AREA**

The Wichita Falls Metropolitan Planning Organization encompasses the eastern portion of Wichita County, which includes the City of Wichita Falls and Pleasant Valley, and a small portion of Archer County, which includes Lakeside City. The MPO area contains 150.01 square miles.

The population of Wichita Falls was 104,553 according to the U.S. Census Bureau estimates for 2010. Also in 2010, the estimated population for Wichita County was 131,500. In contrast, the 2000 U.S. Census indicated the City of Wichita Falls Metropolitan Statistical Area (MSA) to be 151,306. The City of Lakeside City had an estimated 2010 population of 997 while the City of Pleasant Valley had an estimated 2010 population of 336. See the Wichita Falls MPO boundary map in [Figure 1](#) on the next page.

Figure 1 – MPO Boundary Map



**Projection**  
 NAD 1927 StatePlane Texas North Central FIPS 4202  
 Lambert Conformal Conic  
 False Easting: 2000000.000000  
 False Northing: 0.000000  
 Central Meridian: -97.500000  
 Standard Parallel 1: 32.133333  
 Standard Parallel 2: 33.966667  
 Latitude Of Origin: 31.666667  
 GCS North American 1927

**Data Source**  
 ERI ArcInfo  
 Census 2000 and 2010 Data

Wichita Falls MPO  
 Metropolitan Area Boundary



## **E. PUBLIC INVOLVEMENT PROCESS**

WFMPO developed the 2013-2016 Transportation Improvement Program (TIP) in accordance with guidelines listed in the MPO's Public Participation Plan. The public involvement component of the TIP process provides an opportunity for concerned residents to provide input, and voice concerns and priorities regarding proposed roadway and public transportation projects.

The Public Participation Plan requires at least one public hearing to present the Transportation Improvement Program to the public. The WFMPO held two public hearings during the development of this TIP document. The Public Participation Plan requires a public comment period of 30 days prior to the meeting at which the Transportation Policy Committee approves the Transportation Improvement Plan. TIP amendments require a 10-day comment period before adoption by the Policy Board. WFMPO posted the TIP document at least 30 days prior to its adoption by the Policy Board.

WFMPO published Legal Notices of all the transportation planning public meetings prior to the adoption of the 2013-2016 TIP. WFMPO published Legal Notices in the daily local newspaper *Times Record News*. To ensure an opportunity for all interested parties to review and comment on the TIP, the MPO has developed an extensive email list that includes Federal, State, Tribal and Local agencies and all interested parties, including stakeholders and citizens, as discussed in Methods and Strategies of the Public Participation Plan. Additionally, WFMPO published the TIP on the WFMPO's website at [www.wfmppo.com](http://www.wfmppo.com) and [www.wfmppo.org](http://www.wfmppo.org) for people to view.

## **F. PROJECT SELECTION PROCESS**

Federal and state funded capacity expansion projects come from the Metropolitan Transportation Plan. Projects in the Metropolitan Transportation Plan advance to the Short-Range, ten-year plan of the Transportation Improvement Program (TIP) based on funding availability. The approved 2013-2016 TIP programs projects located within the Wichita Falls Metropolitan Area. The TIP assigns each project to a specific fiscal year where project implementation is expected. The TIP gives priority to first year projects and may implement them as soon as plans are completed and funds appropriated. If unable to implement first year projects then the TIP considers second year projects as second priority. The TIP implements second year projects as plans are completed and funds appropriated. Projects in the third and fourth years will follow this same procedure. The WFMPO developed this procedure in cooperation with the Texas Department of Transportation and the Wichita Falls Transit System. See Section 134 (h) (2) of Title 23 U.S.C. as amended.

## **G. PROGRESS FROM PREVIOUS YEARS**

The 2010-2012 Transportation Improvement Program implemented, scheduled for letting, or designed the following projects during FY 2010 and FY 2011. [Table 1](#) lists these projects below. For updates regarding highway and street projects, please refer to the Annual Project Listings, which Wichita Falls MPO provides at its website on [www.wfmppo.com](http://www.wfmppo.com) or [www.wfmppo.org](http://www.wfmppo.org) or by requesting a copy from Wichita Falls MPO, 2100 Seymour Hwy., Wichita Falls, Texas 76301, via email through the above websites or by calling (940) 761-7450. The MPO may also provide progress updates during Transportation Advisory (TAC) and Transportation Policy (TPC) committee meetings throughout the year. WFMPO provides minutes of these meetings on the website.



**Table 1 – Progress from Previous Years**

<b>Project Name</b>	<b>Project Limits</b>	<b>Description</b>	<b>Estimated Cost</b>
IH 44	0.25 Miles East of Maurine Street to US 287	Upgrade Highway Illumination	\$509,634
IH 44	US 287 to 0.25 Miles West of FM 890	Upgrade Highway Illumination	\$172,998
SP 325	US 287 to SH 240	Upgrade Highway Illumination	\$290,808
US 287	IH 44 to 0.25 Miles North of LP 11	Upgrade Highway Illumination	\$165,905
FM 2380	FM 369 to Archer County Line	Seal Coat	\$36,565
SP 325	SH 240 to FM 890	Seal Coat	\$35,143
FM 890	Armstrong Drive to FM 171	Seal Coat	\$13,925
US 82	.630 Miles East of SH 258 to US 277/US287/US82 Interchange	Pavement Markings and Markers-Rehabilitation	\$59,699
VA	Various Locations Within the MPO Area	Pavement Markings and Markers – Misc. Work	\$101,527
Maplewood	On Maplewood Ave, From Midwestern Pkwy to Kemp Blvd.	Safety Treat Fixed Objects (Breakaway Light Poles)	\$75,597
U.S. 82	McKinney Road to Clay County Line	Mill and Level with Overlay	\$1,120,646
U.S. 82	On Frontage Roads from FM369 to Fairway	Full Depth Concrete Pavement Repair	\$448,753
VA	Various Locations District Wide	Bridge Maintenance and Repair	\$139,001
CS	Along Seymour Hwy and along Barnett Road.	Hike and Bike Trail (Sections 3, 4, 5, and 8)	\$2,942,569.21

## **H. AIR QUALITY ISSUES**

The Clean Air Act Amendments of 1990 have significantly affected transportation activities. The impacts include a conformity analysis on all transportation programs, including the TIP, as well as statewide penalties if non-attainment areas do not meet national ambient air quality standards by the designated years for their areas. Currently, the Wichita Falls Metropolitan Area meets all requirements in all categories to be an “Attainment Area”.

## **I. AMERICANS WITH DISABILITIES ACT (ADA)**

All projects considered for funding, regardless of the source, will include provisions for meeting the needs of the disabled. The Cities of Wichita Falls, Pleasant Valley and Lakeside City, Wichita County, the Texas Department of Transportation and the Wichita Falls Transit System continue their efforts to identify and aid the disabled in their mobility needs. All public transportation buses purchased by the City of Wichita Falls are low-floor, front-kneeling, hydraulic ramp equipped and fully accessible to the mobility impaired.

Falls Ride, owned by the City of Wichita Falls, operates a Route Deviation/Demand Response transit system that deviates up to one-quarter mile from the main route to pick up qualifying ADA passengers. Falls Ride picks up qualifying ADA passengers at the curb and delivers them to their destination. Falls Ride operates six main routes that deviate and one express route that serves Sheppard Air Force Base. Qualifying ADA passengers call one day in advance to schedule pick-ups and drop-offs.

## **J. ENVIRONMENTAL JUSTICE**

Title VI of the 1964 Civil Rights Act (42 U.S.C. 2000d-1) states that “No person in the United States shall, on the ground of race, color, or national origin, be excluded from participation in, be denied the benefits of, or be subjected to discrimination under any program or activity receiving Federal financial assistance.” President Clinton’s Executive Order on Environmental Justice in 1999 further amplifies Title VI by providing that “each federal agency shall make achieving environmental justice part of its mission by identifying, as appropriate, disproportionately high and adverse human health or environmental effects of its programs, policies, and activities on minority populations and low-income populations.”

Transportation projects affect the environment and the way we live. Low-income and minority populations should receive an equitable distribution of proposed transportation benefits without suffering from excessively high and difficult impacts to their quality of life. The Wichita Falls MPO developed a process starting in 2005 whereby it could present future planned surface transportation projects to the public for comment and receive project nominations back from them. Each year, usually in September, WFMPO combines projects from the Metropolitan Transportation Plan and the Transportation Improvement Program with project nominations from the public and other government agencies to develop a prioritized project list for the Wichita Falls Metropolitan Area. WFMPO uses the results of this list to develop the annual Environmental Justice Analysis Report. MPO staff analyzes each new project that comes in for impacts on minority and low-income communities. If staff detects adverse impacts to low-income and minority populations then staff looks for ways to avoid the project entirely, minimize or reduce its severity, or mitigate the impact by taking action to alleviate or offset the effect by replacing it with an appropriated resource. If none of these methods works then staff will use enhancement techniques to add a desirable or attractive feature to the project to make it fit more harmoniously into the community. However, this will not replace lost resources or alleviate project impacts. Once complete, MPO staff documents the analysis of each new project in the report and presents it to the Policy Board for review and approval.

## **K. TOTAL PROJECT COST AND YEAR OF EXPENDITURE DOLLARS**

The Safe, Accountable, Flexible, and Efficient Transportation Equity Act: A Legacy for Users (SAFETEA-LU) superseded the Transportation Equity Act for the 21<sup>st</sup> Century (TEA-21) and became law on August 10, 2005. SAFETEA-LU legislation requires Transportation Improvement Programs (TIP’s) to list Total Project Costs and Year of Expenditure dollars for each project. The Year of Expenditure, or simply stated, the year in which construction or a transit project is anticipated, has been identified for each of the projects. The WFMPO applied an annual inflation rate of 4% to all projects listed in the TIP. The TIP provides Total Project Costs to detail the parts of each project such as preliminary engineering, right of way, utility relocation and in the case of transit projects: operating, planning, preventive maintenance, and capital. The Total Project Cost and Year of Expenditure provide the public with a complete description of the components that make up each of the projects.

TxDOT and the MPO try to anticipate future revenues in order to plan for construction, operation, maintenance, and implementation needs of area surface transportation projects. The expenditures for the Transportation Improvement Program are financially constrained by the Year of Expenditure requirements of SAFETEA-LU. MPO staff base their financial constraint on an analysis of past funding, expected funding, and expected needs. The MPO analyzes federal, state, and local revenue sources to estimate total future revenues for projects in the TIP. The MPO utilized A Rate of Growth of 4% per year for all projects, which is consistent with a 4% annual inflation rate. MPO staff based the Rate of Growth on consultations with the Texas Department of Transportation (TxDOT). WFMPO reasonably expects funding for the projects in this document to come from federal, state, and local sources. The planning staff must account for cost escalation as part of the fiscal constraint determination.

Public transportation, or transit, funding apportionments have stayed relatively unchanged during the last five years. However, they are not increasing enough to cover the ever-increasing rate of inflation. The burden of local match by cities, counties, and regional transit providers continues to grow. Some transit providers are looking at ways to address funding gaps. Such methods include reducing service hours and routes, reducing the rate at which they replace buses, and delaying major capital projects like bus terminals. Fortunately, "Falls Ride", the City of Wichita Falls' transit system, has not had to resort to any to any of these tactics. In fact, in July 2008 Falls Ride expanded route coverage by adding one route that connects the two main routes in the north with the three main routes in the south. MPO and Transit staff reworked the five existing routes and reduced headways on all routes by an average of fifteen minutes. The last adjustment to bus fares was in 1987. Therefore, staff analyzed and adjusted them as well. Because of all these changes and improvements, passenger counts are up, which translates to more revenue for system operations. The Transit Administrator also instituted a new bus advertising policy to generate additional revenue. As of this writing, the advertising program has been extremely successful generating as estimated \$120,000 per year. Furthermore, the City of Wichita Falls plans to build a new downtown transit center and have it open by end of 2013.

## **SECTION II. GLOSSARY**

### **A. PROJECT LISTINGS**

<b>TxDOT DISTRICT</b>	Wichita Falls District Office of the Texas Department of Transportation
<b>COUNTY</b>	County in which project is located
<b>CITY</b>	City in which project is located
<b>LET DATE</b>	Approximate date (month/year) that a project will go to contract. Project construction/implementation initiates when the project "lets"
<b>HIGHWAY</b>	Project name or location
<b>LIMITS (FROM)</b>	Cross street or location identifying the initial limits of a project
<b>LIMITS (TO)</b>	Cross street or location identifying the end limits of a project
<b>LAYMANS DESCRIPTION</b>	Brief description of work performed on the project
<b>REVISION DATE</b>	This entry refers to the revision date (i.e. the date a project is added or changed in the Statewide TIP). Most projects listed in the 2013-2016 TIP have a revision date to represent the anticipated approval date of the of the 2013-2016 TIP/Statewide TIP
<b>LOCAL CONTRIBUTION</b>	Local funds contributed to a project in excess of the 20 percent match required to receive federal reimbursement on a project
<b>STATEWIDE CSJ</b>	TxDOT has the ability to program projects through a statewide program using "Statewide CSJ's". This allows TxDOT to group similar type projects, usually maintenance, together for efficient implementation.
<b>NEPA STATUS</b>	All projects receiving federal funding must undergo environmental review. The NEPA status entry indicates the current stage of environmental review for each project (i.e. pending, cleared, exempt)
<b>CS</b>	City Street
<b>CSJ</b>	Control Section Job Number – TxDOT assigned number for projects entered into the Project Development Program (PDP) and Unified Transportation Program (UTP)
<b>PHASE</b>	Project Phase – for Federal Funding (C=Construction, E=Engineering, ROW=Right of Way Acquisition, and T=Transfer)

**MPO ID** MPO Project Identification Number – A number assigned by the MPO for local project identification for use in relating projects to the Metropolitan Transportation Plan.

**TMA** Transportation Maintenance Area

**STP** Surface Transportation Program

**FUNCTIONAL CLASS** Federal Functional Class – Federal classification of streets and highways into functional operating characteristics. Categories are:  
Interstate  
Other Urban Freeways and Expressways  
Other Principal Arterials  
Minor Arterials  
Urban Collectors and Rural Major Collectors  
Rural Minor Collectors  
Urban and Rural Local Streets and Roads

**FUNDING CATEGORY** TxDOT category of funding used to fund the project

1. Preventive Maintenance and Rehabilitation
2. Metropolitan Area (TMA) Corridor Projects
3. Urban Area (Non-TMA) Corridor Projects
4. Statewide Connectivity Corridor Projects
5. Congestion Mitigation and Air Quality (CMAQ) Improvement
6. Structures Replacement and Rehabilitation
7. STP Metropolitan Mobility and Rehabilitation
8. STP Safety
9. STP Transportation Enhancements
10. Supplemental/Miscellaneous Transportation Projects
11. District Discretionary
12. Strategic Priority

## B. GROUPED PROJECT CSJ DEFINITION AND FUNDING

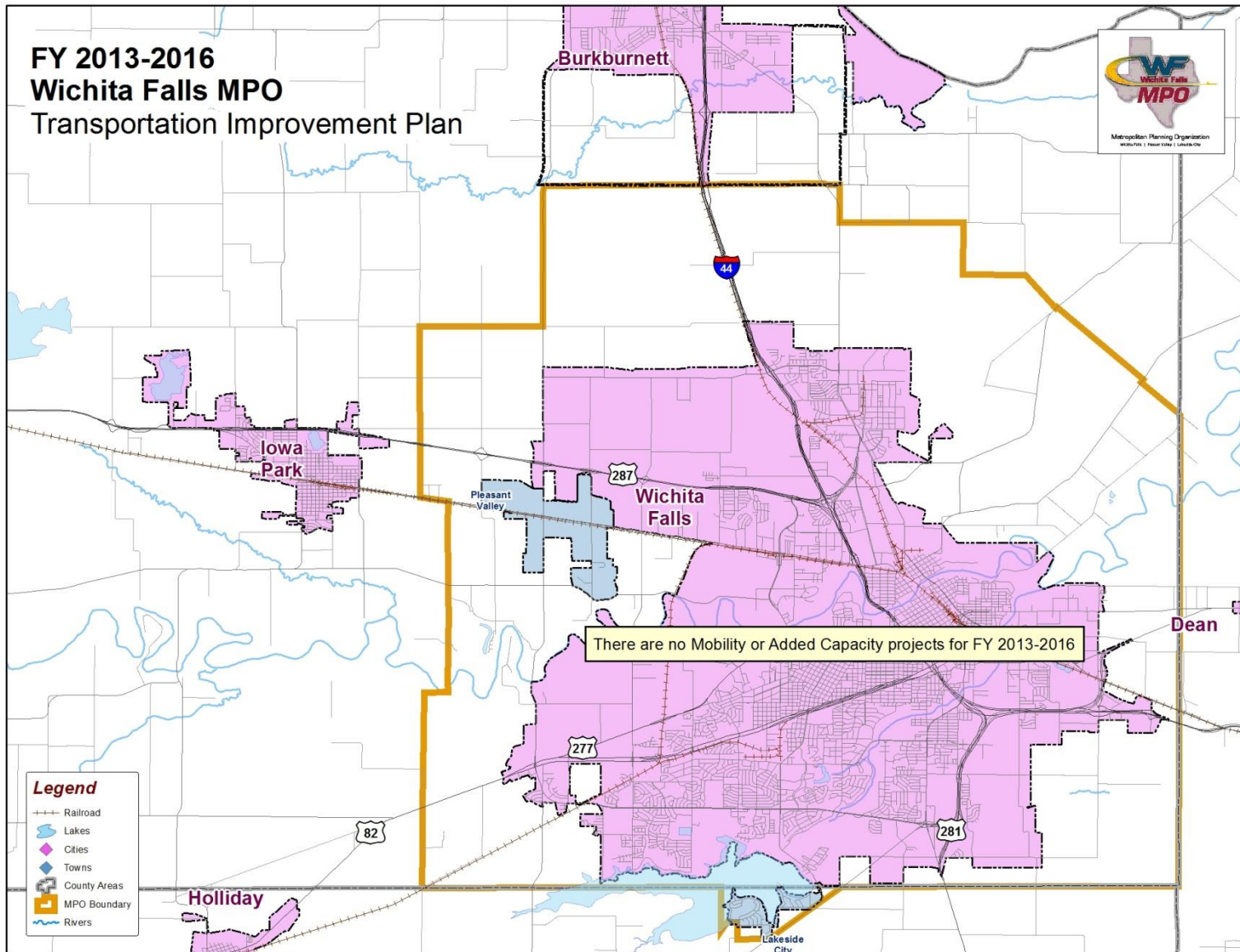
Table 2 - Grouped CSJ Definition and Funding

Proposed CSJ	Grouped Project Category	Definition and Funding
5000-00-950	Preliminary Engineering	Preliminary Engineering for any project that is not added capacity in a non-attainment area. Includes activities which do not involve or lead directly to construction such as planning and technical studies, grants for training and research programs.
5000-00-951	Right of Way Acquisition	Right of Way acquisition for any project that is not added capacity in a non-attainment area. Includes relocation assistance, hardship acquisition and protective buying.
5000-00-952 5000-00-957 5000-00-958	Preventive Maintenance and Rehabilitation	Projects to include pavement repair to preserve existing pavement so that it may achieve its designed loading. Includes seal coats, overlays, resurfacing, restoration and rehabilitation done with existing ROW. Also includes modernization of a highway by reconstruction, adding shoulders or adding auxiliary lanes (e.g., parking, weaving, turning, climbing, non-added capacity).
5000-00-953	Bridge Replacement and Rehabilitation	Projects to replace and/or rehabilitate functionally obsolete or structurally deficient bridges.
5000-00-954	Railroad Grade Separations	Projects to construct or replace existing highway-railroad grade crossings and to rehabilitate and/or replace deficient railroad underpasses, resulting in no added capacity.
5800-00-950	Safety	Projects to include the construction or replacement/rehabilitation of guard rails, median barriers, crash cushions, pavement markings, skid treatments, medians, lighting improvements, railroad/highway crossing warning devices, fencing, intersection improvements (e.g., turn lanes), signalization projects and interchange modifications. Also includes projects funded via the Federal Hazard Elimination Program and the Federal Railroad Signal Safety Program.
5000-00-956	Landscaping	Project consisting of typical right of way landscape development, establishment and aesthetic improvements to include any associated erosion control and environmental mitigation activities.
5800-00-915	Intelligent Transportation Systems Deployment	Highway traffic operation improvement projects including the installation of ramp metering control devices, variable message signs, traffic monitoring equipment and projects in the Federal ITS/IVHS programs.
5000-00-916	Bicycle and Pedestrian	Construction or rehabilitation of bicycle and pedestrian lanes, paths and facilities.
5000-00-917	Safety Rest Areas and Truck Weigh Stations	Construction and improvement of rest areas and truck weigh stations.
5000-00-918	Transit Improvements	Projects include the construction and improvement of small passenger shelters and information kiosks. Also includes the construction and improvement of rail storage/maintenance facilities bus transfer facilities here minor amounts of additional land are required and there is not a substantial increase in the number of users.

**SECTION III  
FEDERALLY FUNDED  
MOBILITY (HIGHWAY) PROJECTS**

# 2013-2016 Transportation Improvement Program Projects

## Figure 2 – 2013-2016 TIP Project Location Map





# SECTION IV STATE FUNDED HIGHWAY PROJECTS

**STATE FUNDED HIGHWAY PROJECTS** include projects that do not receive Federal funds. These projects receive only State or Local funds.

The Wichita Falls FY 2013-2016 TIP does not contain any State funded highway projects.

**SECTION V  
LOCALLY FUNDED  
REGIONALLY SIGNIFICANT  
PROJECTS**

## 2013-2016 Transportation Improvement Program Projects

**LOCALLY FUNDED REGIONALLY SIGNIFICANT PROJECTS** include projects that do not receive Federal or State funds. These projects only receive Local funds.

The Wichita Falls FY 2013-2016 TIP does not contain any locally funded regionally significant projects.

**Wichita Falls Metropolitan Planning Organization  
Highway Financial Summary – Year of Expenditure Costs  
2013-2016 TIP/STIP**

**Funding by Category**

Category	Description	FY 2013		FY 2014		FY 2015		FY 2016		Total FY 2013 - 2016	
		Programmed	Authorized	Programmed	Authorized	Programmed	Authorized	Programmed	Authorized	Programmed	Authorized
1	Preventive Maintenance & Rehabilitation	\$0	\$0	\$0	\$0	\$0	\$0	\$0	\$0	\$0	\$0
2	Metropolitan Area (TMA) Corridor Projects	\$0	\$0	\$0	\$0	\$0	\$0	\$0	\$0	\$0	\$0
3	Urban Area (Non-TMA) Corridor Projects	\$0	\$0	\$0	\$0	\$0	\$0	\$0	\$0	\$0	\$0
4	Statewide Connectivity Corridor Projects	\$0	\$0	\$0	\$0	\$0	\$0	\$0	\$0	\$0	\$0
5	Congestion Mitigation & Air Quality (CMAQ) Improvement	\$0	\$0	\$0	\$0	\$0	\$0	\$0	\$0	\$0	\$0
6	Structures Replacement & Rehabilitation	\$0	\$0	\$0	\$0	\$0	\$0	\$0	\$0	\$0	\$0
7	STP Metropolitan Mobility & Rehabilitation	\$0	\$0	\$0	\$0	\$0	\$0	\$0	\$0	\$0	\$0
8	STP Safety	\$0	\$0	\$0	\$0	\$0	\$0	\$0	\$0	\$0	\$0
9	STP Transportation Enhancements			\$0	\$0	\$0	\$0	\$0	\$0	\$0	\$0
10	Supplemental & Miscellaneous Transportation Projects	\$0	\$0	\$0	\$0	\$0	\$0	\$0	\$0	\$0	\$0
11	District Discretionary	\$0	\$0	\$0	\$0	\$0	\$0	\$0	\$0	\$0	\$0
12	Strategic Priority	\$0	\$0	\$0	\$0	\$0	\$0	\$0	\$0	\$0	\$0
Other	Prop 12	\$0	\$0	\$0	\$0	\$0	\$0	\$0	\$0	\$0	\$0
Other	Prop 14	\$0	\$0	\$0	\$0	\$0	\$0	\$0	\$0	\$0	\$0
Other		\$0	\$0	\$0	\$0	\$0	\$0	\$0	\$0	\$0	\$0
LC	Local Contributions	\$0	\$0	\$0	\$0	\$0	\$0	\$0	\$0	\$0	\$0
	<b>Total</b>	<b>\$0</b>	<b>\$0</b>	<b>\$0</b>	<b>\$0</b>	<b>\$0</b>	<b>\$0</b>	<b>\$0</b>	<b>\$0</b>	<b>\$0</b>	<b>\$0</b>

**Funding Participation Source**

Source	FY 2013	FY 2014	FY 2015	FY 2016	Total
Federal	\$0	\$0	\$0	\$0	\$0
State	\$0	\$0	\$0	\$0	\$0
Local Contributions	\$0	\$0	\$0	\$0	\$0
Prop 12	\$0	\$0	\$0	\$0	\$0
Prop 14	\$0	\$0	\$0	\$0	\$0
Other (Insert Entity Name)	\$0	\$0	\$0	\$0	\$0
Other (Insert Entity Name)	\$0	\$0	\$0	\$0	\$0
<b>Total Programmed</b>	<b>\$0</b>	<b>\$0</b>	<b>\$0</b>	<b>\$0</b>	<b>\$0</b>

# SECTION VI FEDERALLY FUNDED TRANSIT PROJECTS

**FY 2013 TRANSIT PROJECT LIST - SECTION 5307  
WICHITA FALLS MPO TRANSPORTATION IMPROVEMENT PROGRAM**

Wichita Falls		YOE = Year of Expenditure	
General Project Information		Funding Information (YOE)	
Project Sponsor:	WICHITA FALLS TRANSIT SYSTEM	Federal Funding Category	5307
MPO Project Information (reference number,etc)	TX-95-X052	Federal (FTA) Funds	\$650,000
Apportionment Year:	FY 2012	State Funds from TxDOT	\$0
Project Phase:	CAPITAL/CONSTRUCTION	Other Funds	\$162,500
Brief Project Description:	Capital Expenditures - Construction of Downtown Travel Center.	Fiscal Year Cost	\$812,500
		Total Project Cost	\$4,887,097
		Trans. Dev. Credits Requested	\$0
Sec 5309 ID Number:	N/A	Trans. Dev. Credits Awarded (Date & Amount)	0
Amendment Date & Action: July 25, 2012 - From WFMP's \$2.808 million allocation of TxDOT \$2 billion state funds. Current as of 10/24/2012			
General Project Information		Funding Information (YOE)	
Project Sponsor:		Federal Funding Category	5307
MPO Project Information (reference number,etc)		Federal (FTA) Funds	\$0
Apportionment Year:		State Funds from TxDOT	\$0
Project Phase:		Other Funds	\$0
Brief Project Description:		Fiscal Year Cost	\$0
		Total Project Cost	\$0
		Trans. Dev. Credits Requested	
Sec 5309 ID Number:		Trans. Dev. Credits Awarded (Date & Amount)	
Amendment Date & Action:			
General Project Information		Funding Information (YOE)	
Project Sponsor:		Federal Funding Category	5307
MPO Project Information (reference number,etc)		Federal (FTA) Funds	\$0
Apportionment Year:		State Funds from TxDOT	\$0
Project Phase:		Other Funds	\$0
Brief Project Description:		Fiscal Year Cost	\$0
		Total Project Cost	\$0
		Trans. Dev. Credits Requested	
Sec 5309 ID Number:		Trans. Dev. Credits Awarded (Date & Amount)	
Amendment Date & Action:			
General Project Information		Funding Information (YOE)	
Project Sponsor:		Federal Funding Category	5307
MPO Project Information (reference number,etc)		Federal (FTA) Funds	\$0
Apportionment Year:		State Funds from TxDOT	\$0
Project Phase:		Other Funds	\$0
Brief Project Description:		Fiscal Year Cost	\$0
		Total Project Cost	\$0
		Trans. Dev. Credits Requested	
Sec 5309 ID Number:		Trans. Dev. Credits Awarded (Date & Amount)	
Amendment Date & Action:			
General Project Information		Funding Information (YOE)	
Project Sponsor:		Federal Funding Category	5307
MPO Project Information (reference number,etc)		Federal (FTA) Funds	\$0
Apportionment Year:		State Funds from TxDOT	\$0
Project Phase:		Other Funds	\$0
Brief Project Description:		Fiscal Year Cost	\$0
		Total Project Cost	\$0
		Trans. Dev. Credits Requested	
Sec 5309 ID Number:		Trans. Dev. Credits Awarded (Date & Amount)	
Amendment Date & Action:			
<b>FY (TIP) 2012 - MPO PROJECT TOTALS</b>		<b>CLOSED GRANT</b>	<b>\$812,500</b>

<b>FY 2013 TRANSIT PROJECT LIST - SECTION 5307</b>			
<b>WICHITA FALLS MPO TRANSPORTATION IMPROVEMENT PROGRAM</b>			
Wichita Falls			YOE = Year of Expenditure
<b>General Project Information</b>		<b>Funding Information (YOE)</b>	
<b>Project Sponsor:</b>	WICHITA FALLS TRANSIT SYSTEM	<b>Federal Funding Category</b>	5307
<b>MPO Project Information (reference number,etc)</b>	TX-90-Y008-00	<b>Federal (FTA) Funds</b>	\$526,793
<b>Apportionment Year:</b>	FY 2013	<b>State Funds from TxDOT</b>	\$0
<b>Project Phase:</b>	CAPITAL	<b>Other Funds</b>	\$0
<b>Brief Project Description:</b>	Capital Expenditures - construction of Downtown Travel Center.	<b>Fiscal Year Cost</b>	\$526,793
		<b>Total Project Cost</b>	\$5,318,600
		<b>Trans. Dev. Credits Requested</b>	105,359
<b>Sec 5309 ID Number:</b>	N/A	<b>Trans. Dev. Credits Awarded (Date &amp; Amount)</b>	105,359 awarded by TTC Nov. 2012
<b>Amendment Date &amp; Action:</b> October 30, 2013 - Administrative Revision identifying actual FTA amounts available for programming.			
<b>General Project Information</b>		<b>Funding Information (YOE)</b>	
<b>Project Sponsor:</b>	WICHITA FALLS TRANSIT SYSTEM	<b>Federal Funding Category</b>	5307
<b>MPO Project Information (reference number,etc)</b>	TX-90-Y008-00	<b>Federal (FTA) Funds</b>	\$528,492
<b>Apportionment Year:</b>	FY 2013	<b>State Funds from TxDOT</b>	\$0
<b>Project Phase:</b>	PREVENTIVE MAINTENANCE	<b>Other Funds</b>	\$132,123
<b>Brief Project Description:</b>	Preventive Maintenance	<b>Fiscal Year Cost</b>	\$660,615
		<b>Total Project Cost</b>	\$660,615
		<b>Trans. Dev. Credits Requested</b>	
<b>Sec 5309 ID Number:</b>	N/A	<b>Trans. Dev. Credits Awarded (Date &amp; Amount)</b>	
<b>Amendment Date &amp; Action:</b> October 30, 2013 - Administrative Revision identifying actual FTA amounts available for programming.			
<b>General Project Information</b>		<b>Funding Information (YOE)</b>	
<b>Project Sponsor:</b>	WICHITA FALLS TRANSIT SYSTEM	<b>Federal Funding Category</b>	5307
<b>MPO Project Information (reference number,etc)</b>	TX-90-Y008-00	<b>Federal (FTA) Funds</b>	\$343,570
<b>Apportionment Year:</b>	FY 2013	<b>State Funds from TxDOT</b>	\$328,943
<b>Project Phase:</b>	OPERATING ASSISTANCE	<b>Other Funds</b>	\$284,627
<b>Brief Project Description:</b>	Operating Expenditures	<b>Fiscal Year Cost</b>	\$957,140
		<b>Total Project Cost</b>	\$957,140
		<b>Trans. Dev. Credits Requested</b>	
<b>Sec 5309 ID Number:</b>	N/A	<b>Trans. Dev. Credits Awarded (Date &amp; Amount)</b>	
<b>Amendment Date &amp; Action:</b> October 30, 2013 - Administrative Revision identifying actual FTA amounts available for programming.			
<b>General Project Information</b>		<b>Funding Information (YOE)</b>	
<b>Project Sponsor:</b>	WICHITA FALLS TRANSIT SYSTEM	<b>Federal Funding Category</b>	5307
<b>MPO Project Information (reference number,etc)</b>	TX-90-Y008-00	<b>Federal (FTA) Funds</b>	\$44,000
<b>Apportionment Year:</b>	FY 2013	<b>State Funds from TxDOT</b>	\$0
<b>Project Phase:</b>	PLANNING	<b>Other Funds</b>	\$11,000
<b>Brief Project Description:</b>	Planning Expenditures - Grant Administration, Annual Software Maintenance, & Transit Studies	<b>Fiscal Year Cost</b>	\$55,000
		<b>Total Project Cost</b>	\$55,000
		<b>Trans. Dev. Credits Requested</b>	
<b>Sec 5309 ID Number:</b>	N/A	<b>Trans. Dev. Credits Awarded (Date &amp; Amount)</b>	
<b>Amendment Date &amp; Action:</b> October 30, 2013 - Administrative Revision identifying actual FTA amounts available for programming.			
<b>FY (TIP) 2013 - MPO PROJECT TOTALS</b>		<b>CLOSED GRANT</b>	<b>\$2,199,548</b>



FY 2013 TRANSIT PROJECT LIST - SECTION 5307			
WICHITA FALLS MPO TRANSPORTATION IMPROVEMENT PROGRAM			
Wichita Falls			YOE = Year of Expenditure
General Project Information		Funding Information (YOE)	
Project Sponsor:	WICHITA FALLS TRANSIT SYSTEM	Federal Funding Category	5307
MPO Project Information (reference number, etc)	TX-90-Y115	Federal (FTA) Funds	\$547,252
Apportionment Year:	FY 2013	State Funds from TxDOT	\$0
Project Phase:	CAPITAL	Other Funds	\$78,537
Brief Project Description:	Capital Expenditures - Reimbursement for Construction of Downtown Travel Center. Purchase 2 ea. 33-ft. Ford 550, Entourage, Cutaway Buses	Fiscal Year Cost	\$625,789
		Total Project Cost	\$625,789
		Trans. Dev. Credits Requested	34,965
Sec 5309 ID Number:	N/A	Trans. Dev. Credits Awarded (Date & Amount)	May 2014 - 34,965
Amendment Date & Action: October 1, 2014 - Administrative revision identifying actual FTA amounts available for programming.			
General Project Information		Funding Information (YOE)	
Project Sponsor:	WICHITA FALLS TRANSIT SYSTEM	Federal Funding Category	5307
MPO Project Information (reference number, etc)	TX-90-Y115	Federal (FTA) Funds	\$583,174
Apportionment Year:	FY 2013	State Funds from TxDOT	\$0
Project Phase:	PREVENTIVE MAINTENANCE	Other Funds	\$145,794
Brief Project Description:	Preventive Maintenance	Fiscal Year Cost	\$728,968
		Total Project Cost	\$728,968
		Trans. Dev. Credits Requested	
Sec 5309 ID Number:	N/A	Trans. Dev. Credits Awarded (Date & Amount)	
Amendment Date & Action: October 1, 2014 - Administrative revision identifying actual FTA amounts available for programming.			
General Project Information		Funding Information (YOE)	
Project Sponsor:	WICHITA FALLS TRANSIT SYSTEM	Federal Funding Category	5307
MPO Project Information (reference number, etc)	TX-90-Y115	Federal (FTA) Funds	\$387,197
Apportionment Year:	FY 2013	State Funds from TxDOT	\$317,590
Project Phase:	OPERATING ASSISTANCE	Other Funds	\$98,745
Brief Project Description:	Operating Expenditures	Fiscal Year Cost	\$803,532
		Total Project Cost	\$803,532
		Trans. Dev. Credits Requested	
Sec 5309 ID Number:	N/A	Trans. Dev. Credits Awarded (Date & Amount)	
Amendment Date & Action: October 1, 2014 - Administrative revision identifying actual FTA amounts available for programming.			
General Project Information		Funding Information (YOE)	
Project Sponsor:	WICHITA FALLS TRANSIT SYSTEM	Federal Funding Category	5307
MPO Project Information (reference number, etc)	TX-90-Y115	Federal (FTA) Funds	\$19,803
Apportionment Year:	FY 2013	State Funds from TxDOT	\$0
Project Phase:	PLANNING	Other Funds	\$4,951
Brief Project Description:	Planning Expenditures - Grant Administration, Annual Software Maintenance, & Transit Studies	Fiscal Year Cost	\$24,754
		Total Project Cost	\$24,754
		Trans. Dev. Credits Requested	
Sec 5309 ID Number:	N/A	Trans. Dev. Credits Awarded (Date & Amount)	
Amendment Date & Action: October 1, 2014 - Administrative revision identifying actual FTA amounts available for programming.			
<b>FY (TIP) 2013 - MPO PROJECT TOTALS</b>		<b>ACTIVE</b>	<b>\$2,183,043</b>

**FY 2014 TRANSIT PROJECT LIST - SECTION 5339  
WICHITA FALLS MPO TRANSPORTATION IMPROVEMENT PROGRAM**

Wichita Falls		YOE = Year of Expenditure	
General Project Information		Funding Information (YOE)	
Project Sponsor:	WICHITA FALLS TRANSIT SYSTEM	Federal Funding Category	5339
MPO Project Information: (reference number, etc.)	TX-WF2014	Federal (FTA) Funds	\$399,293
Apportionment Year:	FY 2014	State Funds from TxDOT	\$0
Project Phase:	BUS ACQUISITION	Other Funds	\$707
Brief Project Description:	Capital Expenditures - Acquire one (1) replacement 35-ft, 500,000 mile bus	Fiscal Year Cost	\$400,000
		Total Project Cost	\$400,000
		Trans. Dev. Credits Requested	79,859
Sec 5309 ID Number	N/A	Trans. Dev. Credits Awarded (Date & Amount)	79,859 awarded May 2014
Amendment Date & Action: April 23, 2014 - Initial grant application to purchase one replacement bus.			
General Project Information		Funding Information (YOE)	
Project Sponsor:		Federal Funding Category	
MPO Project Information: (reference number, etc.)		Federal (FTA) Funds	
Apportionment Year:		State Funds from TxDOT	
Project Phase:		Other Funds	
Brief Project Description:		Fiscal Year Cost	
		Total Project Cost	
		Trans. Dev. Credits Requested	
Sec 5309 ID Number		Trans. Dev. Credits Awarded (Date & Amount)	
Amendment Date & Action:			
General Project Information		Funding Information (YOE)	
Project Sponsor:		Federal Funding Category	
MPO Project Information: (reference number, etc.)		Federal (FTA) Funds	
Apportionment Year:		State Funds from TxDOT	
Project Phase:		Other Funds	
Brief Project Description:		Fiscal Year Cost	
		Total Project Cost	
		Trans. Dev. Credits Requested	
Sec 5309 ID Number		Trans. Dev. Credits Awarded (Date & Amount)	
Amendment Date & Action:			
General Project Information		Funding Information (YOE)	
Project Sponsor:		Federal Funding Category	
MPO Project Information: (reference number, etc.)		Federal (FTA) Funds	
Apportionment Year:		State Funds from TxDOT	
Project Phase:		Other Funds	
Brief Project Description:		Fiscal Year Cost	
		Total Project Cost	
		Trans. Dev. Credits Requested	
Sec 5309 ID Number		Trans. Dev. Credits Awarded (Date & Amount)	
Amendment Date & Action:			
General Project Information		Funding Information (YOE)	
Project Sponsor:		Federal Funding Category	
MPO Project Information: (reference number, etc.)		Federal (FTA) Funds	
Apportionment Year:		State Funds from TxDOT	
Project Phase:		Other Funds	
Brief Project Description:		Fiscal Year Cost	
		Total Project Cost	
		Trans. Dev. Credits Requested	
Sec 5309 ID Number		Trans. Dev. Credits Awarded (Date & Amount)	
Amendment Date & Action:			
<b>FY (TIP) 2014 - MPO PROJECT TOTALS</b>		<b>ACTIVE</b>	<b>\$400,000</b>

<b>FY 2014 TRANSIT PROJECT LIST - SECTION 5307</b>			
<b>WICHITA FALLS MPO TRANSPORTATION IMPROVEMENT PROGRAM</b>			
Wichita Falls			YOE = Year of Expenditure
<b>General Project Information</b>		<b>Funding Information (YOE)</b>	
<b>Project Sponsor:</b>	WICHITA FALLS TRANSIT SYSTEM	<b>Federal Funding Category</b>	5307
<b>MPO Project Information:</b> (reference number, etc.)	TX-WF-2014	<b>Federal (FTA) Funds</b>	\$409,141
<b>Apportionment Year:</b>	FY 2014	<b>State Funds from TxDOT</b>	\$0
<b>Project Phase:</b>	CAPITAL	<b>Other Funds</b>	\$102,285
<b>Brief Project Description:</b> Capital Expenditures - Reimbursement for construction of Downtown Travel Center. Acquire shop equipment and support vehicle. Partial payment for GIS/TransCAD software annual maintenance.		<b>Fiscal Year Cost</b>	\$511,426
		<b>Total Project Cost</b>	\$511,426
		<b>Trans. Dev. Credits Requested</b>	
<b>Sec 5309 ID Number</b>	N/A	<b>Trans. Dev. Credits Awarded (Date &amp; Amount)</b>	
<b>Amendment Date &amp; Action:</b> October 1, 2014 Administrative revision identifying actual FTA amounts available for programming.			
<b>General Project Information</b>		<b>Funding Information (YOE)</b>	
<b>Project Sponsor:</b>		<b>Federal Funding Category</b>	5307
<b>MPO Project Information:</b> (reference number, etc.)	TX-WF-2014	<b>Federal (FTA) Funds</b>	\$566,748
<b>Apportionment Year:</b>	FY 2014	<b>State Funds from TxDOT</b>	\$0
<b>Project Phase:</b>	PREVENTIVE MAINTENANCE	<b>Other Funds</b>	\$141,687
<b>Brief Project Description:</b> Preventive maintenance for the bus fleet		<b>Fiscal Year Cost</b>	\$708,435
		<b>Total Project Cost</b>	\$708,435
		<b>Trans. Dev. Credits Requested</b>	
<b>Sec 5309 ID Number</b>		<b>Trans. Dev. Credits Awarded (Date &amp; Amount)</b>	
<b>Amendment Date &amp; Action:</b> October 1, 2014 Administrative revision identifying actual FTA amounts available for programming.			
<b>General Project Information</b>		<b>Funding Information (YOE)</b>	
<b>Project Sponsor:</b>		<b>Federal Funding Category</b>	5307
<b>MPO Project Information:</b> (reference number, etc.)	TX-WF-2014	<b>Federal (FTA) Funds</b>	\$456,700
<b>Apportionment Year:</b>	FY 2014	<b>State Funds from TxDOT</b>	\$338,171
<b>Project Phase:</b>	OPERATING ASSISTANCE	<b>Other Funds</b>	\$403,529
<b>Brief Project Description:</b> Fleet operating assistance		<b>Fiscal Year Cost</b>	\$1,198,400
		<b>Total Project Cost</b>	\$1,198,400
		<b>Trans. Dev. Credits Requested</b>	
<b>Sec 5309 ID Number</b>		<b>Trans. Dev. Credits Awarded (Date &amp; Amount)</b>	
<b>Amendment Date &amp; Action:</b> October 1, 2014 Administrative revision identifying actual FTA amounts available for programming.			
<b>General Project Information</b>		<b>Funding Information (YOE)</b>	
<b>Project Sponsor:</b>		<b>Federal Funding Category</b>	5307
<b>MPO Project Information:</b> (reference number, etc.)	TX-WF-2014	<b>Federal (FTA) Funds</b>	\$20,000
<b>Apportionment Year:</b>	FY 2014	<b>State Funds from TxDOT</b>	\$0
<b>Project Phase:</b>	PLANNING	<b>Other Funds</b>	\$5,000
<b>Brief Project Description:</b> General development and comprehensive planning		<b>Fiscal Year Cost</b>	\$25,000
		<b>Total Project Cost</b>	\$25,000
		<b>Trans. Dev. Credits Requested</b>	
<b>Sec 5309 ID Number</b>		<b>Trans. Dev. Credits Awarded (Date &amp; Amount)</b>	
<b>Amendment Date &amp; Action:</b> October 1, 2014 Administrative revision identifying actual FTA amounts available for programming.			
<b>FY (TIP) 2014 - MPO PROJECT TOTALS</b>		<b>IN DEVELOPMENT</b>	<b>\$2,443,261</b>

FY 2015 TRANSIT PROJECT LIST - SECTION 5307			
WICHITA FALLS MPO TRANSPORTATION IMPROVEMENT PROGRAM			
Wichita Falls			YOE = Year of Expenditure
<b>General Project Information</b>		<b>Funding Information (YOE)</b>	
Project Sponsor:	WICHITA FALLS TRANSIT SYSTEM	Federal Funding Category	5307
MPO Project Information: (reference number, etc.)	TX-WF-2015	Federal (FTA) Funds	\$100,000
Apportionment Year:	FY 2015	State Funds from TxDOT	\$0
Project Phase:	SHOP EQUIPMENT	Other Funds	\$25,000
Brief Project Description:	Capital Expenditures - Acquire replacement bus lifts, parts washers, and small shop tools and equipment	Fiscal Year Cost	\$125,000
		Total Project Cost	\$125,000
		Trans. Dev. Credits Requested	25,000
Sec 5309 ID Number	N/A	Trans. Dev. Credits Awarded (Date & Amount)	\$0
Amendment Date & Action:			
<b>General Project Information</b>		<b>Funding Information (YOE)</b>	
Project Sponsor:	WICHITA FALLS TRANSIT SYSTEM	Federal Funding Category	5307
MPO Project Information: (reference number, etc.)	TX-WF-2015	Federal (FTA) Funds	\$909,510
Apportionment Year:	FY 2015	State Funds from TxDOT	\$0
Project Phase:	PREVENTIVE MAINTENANCE	Other Funds	\$227,378
Brief Project Description:	Preventive Maintenance	Fiscal Year Cost	\$1,136,888
		Total Project Cost	\$1,136,888
		Trans. Dev. Credits Requested	227,378
Sec 5309 ID Number	N/A	Trans. Dev. Credits Awarded (Date & Amount)	\$0
Amendment Date & Action:			
<b>General Project Information</b>		<b>Funding Information (YOE)</b>	
Project Sponsor:	WICHITA FALLS TRANSIT SYSTEM	Federal Funding Category	5307
MPO Project Information: (reference number, etc.)	TX-WF-2015	Federal (FTA) Funds	\$364,800
Apportionment Year:	FY 2015	State Funds from TxDOT	\$307,069
Project Phase:	OPERATING ASSISTANCE	Other Funds	\$327,731
Brief Project Description:	Operating Expenditures	Fiscal Year Cost	\$999,600
		Total Project Cost	\$999,600
		Trans. Dev. Credits Requested	
Sec 5309 ID Number	N/A	Trans. Dev. Credits Awarded (Date & Amount)	
Amendment Date & Action:			
<b>General Project Information</b>		<b>Funding Information (YOE)</b>	
Project Sponsor:	WICHITA FALLS TRANSIT SYSTEM	Federal Funding Category	5307
MPO Project Information: (reference number, etc.)	TX-WF-2015	Federal (FTA) Funds	\$44,000
Apportionment Year:	FY 2015	State Funds from TxDOT	\$0
Project Phase:	PLANNING	Other Funds	\$11,000
Brief Project Description:	Planning Expenditures - Grant Administration, Annual Software Maintenance, & Transit Studies	Fiscal Year Cost	\$55,000
		Total Project Cost	\$55,000
		Trans. Dev. Credits Requested	11,000
Sec 5309 ID Number	N/A	Trans. Dev. Credits Awarded (Date & Amount)	\$0
Amendment Date & Action:			
<b>FY (TIP) 2015 - MPO PROJECT TOTALS</b>		<b>ESTIMATED COST</b>	<b>\$2,316,488</b>

FY 2016 TRANSIT PROJECT LIST - SECTION 5307			
WICHITA FALLS MPO TRANSPORTATION IMPROVEMENT PROGRAM			
Wichita Falls			YOE = Year of Expenditure
General Project Information		Funding Information (YOE)	
Project Sponsor:	WICHITA FALLS TRANSIT SYSTEM	Federal Funding Category	5307
MPO Project Information: (reference number, etc.)	TX-WF-2016	Federal (FTA) Funds	\$600,000
Apportionment Year:	FY 2016	State Funds from TxDOT	\$0
Project Phase:	BUS ACQUISITION	Other Funds	\$150,000
Brief Project Description:	Capital Expenditures - Acquire two (2) 35-ft, 500,000 mile replacment buses	Fiscal Year Cost	\$750,000
		Total Project Cost	\$750,000
		Trans. Dev. Credits Requested	150,000
Sec 5309 ID Number	N/A	Trans. Dev. Credits Awarded (Date & Amount)	\$0
Amendment Date & Action:			
General Project Information		Funding Information (YOE)	
Project Sponsor:	WICHITA FALLS TRANSIT SYSTEM	Federal Funding Category	5307
MPO Project Information: (reference number, etc.)	TX-WF-2016	Federal (FTA) Funds	\$421,314
Apportionment Year:	FY 2016	State Funds from TxDOT	\$0
Project Phase:	PREVENTIVE MAINTENANCE	Other Funds	\$105,329
Brief Project Description:	Preventive Maintenance	Fiscal Year Cost	\$526,643
		Total Project Cost	\$526,643
		Trans. Dev. Credits Requested	105,329
Sec 5309 ID Number	N/A	Trans. Dev. Credits Awarded (Date & Amount)	\$0
Amendment Date & Action:			
General Project Information		Funding Information (YOE)	
Project Sponsor:	WICHITA FALLS TRANSIT SYSTEM	Federal Funding Category	5307
MPO Project Information: (reference number, etc.)	TX-WF-2016	Federal (FTA) Funds	\$374,796
Apportionment Year:	FY 2016	State Funds from TxDOT	\$307,069
Project Phase:	OPERATING ASSISTANCE	Other Funds	\$337,727
Brief Project Description:	Operating Expenditures	Fiscal Year Cost	\$1,019,592
		Total Project Cost	\$1,019,592
		Trans. Dev. Credits Requested	
Sec 5309 ID Number	N/A	Trans. Dev. Credits Awarded (Date & Amount)	
Amendment Date & Action:			
General Project Information		Funding Information (YOE)	
Project Sponsor:	WICHITA FALLS TRANSIT SYSTEM	Federal Funding Category	5307
MPO Project Information: (reference number, etc.)	TX-WF-2016	Federal (FTA) Funds	\$44,000
Apportionment Year:	FY 2016	State Funds from TxDOT	\$0
Project Phase:	PLANNING	Other Funds	\$11,000
Brief Project Description:	Planning Expenditures - Grant Administration, Annual Software Maintenance, & Transit Studies	Fiscal Year Cost	\$55,000
		Total Project Cost	\$55,000
		Trans. Dev. Credits Requested	11,000
Sec 5309 ID Number	N/A	Trans. Dev. Credits Awarded (Date & Amount)	\$0
Amendment Date & Action:			
FY (TIP) 2016 - MPO PROJECT TOTALS		ESTIMATED COST	\$2,351,235

**Transit Financial Summary  
Wichita Falls MPO / District  
FY 2013 - 2016 Transportation Improvement Program**

All Figures in Year of Expenditure (YOE) Dollars

Current as of October 16, 2013

Transit Program		FY 2013			FY 2014			FY 2015		
		Federal	State/Local	Total	Federal	State/Local	Total	Federal	State/Local	Total
1	Sec. 5307 - Urbanized Formula >200K			0						
2	Sec. 5307 - Urbanized Formula <200K	2,980,281	1,402,310	4,382,591	1,452,589	990,672	2,443,261	1,418,310	898,178	2,316,488
3	Sec. 5309 - Discretionary			0			0			0
4	Sec. 5310 - Elderly & Individuals w/Disabilities			0			0			0
5	Sec. 5311 - Nonurbanized Formula			0			0			0
6	Sec. 5316 - JARC >200K			0			0			0
7	Sec. 5316 - JARC <200K			0			0			0
8	Sec. 5316 - JARC Nonurbanized			0			0			0
9	Sec. 5317 - New Freedom >200K			0			0			0
10	Sec. 5317 - New Freedom <200K			0			0			0
11	Sec. 5317 - New Freedom Nonurbanized			0			0			0
12	Other FTA Funds (Section 5339)			0	399,293	707	400,000			0
13	Regionally Significant or Other (incl FHWA transfers)			0			0			0
<b>Total Funds</b>		<b>\$2,980,281</b>	<b>\$1,402,310</b>	<b>\$4,382,591</b>	<b>\$1,851,882</b>	<b>\$991,379</b>	<b>\$2,843,261</b>	<b>\$1,418,310</b>	<b>\$898,178</b>	<b>\$2,316,488</b>
Transportation Development Credits Requested				140,324			79,859			0
Awarded				140,324			79,859			0

All Figures in Year of Expenditure (YOE) Dollars

Transit Program		FY 2016			Total		
		Federal	State/Local	Total	Federal	State/Local	Total
1	Sec. 5307 - Urbanized Formula >200K			0			0
2	Sec. 5307 - Urbanized Formula <200K	1,440,110	911,125	2,351,235	7,291,290	4,202,285	11,493,575
3	Sec. 5309 - Discretionary			0	0	0	0
4	Sec. 5310 - Elderly & Individuals w/Disabilities			0	0	0	0
5	Sec. 5311 - Nonurbanized Formula			0	0	0	0
6	Sec. 5316 - JARC >200K			0	0	0	0
7	Sec. 5316 - JARC <200K			0	0	0	0
8	Sec. 5316 - JARC Nonurbanized			0	0	0	0
9	Sec. 5317 - New Freedom >200K			0	0	0	0
10	Sec. 5317 - New Freedom <200K			0	0	0	0
11	Sec. 5317 - New Freedom Nonurbanized			0	0	0	0
12	Other FTA Funds (Section 5339)			0	399,293	707	400,000
13	Regionally Significant or Other (incl FHWA transfers)			0	0	0	0
<b>Total Funds</b>		<b>\$1,440,110</b>	<b>\$911,125</b>	<b>\$2,351,235</b>	<b>\$7,690,583</b>	<b>\$4,202,992</b>	<b>\$11,893,575</b>
Transportation Development Credits Requested				0			220,183
Awarded				0			220,183

**SECTION VII – TRANSIT FINANCIAL SUMMARY**

**YOE Total Project Cost Methodology:**

- WFMPD accomplished calculations for 2013-2016 Year of Expenditure costs by utilizing actual costs from FY 2012 in all four major project areas: Capital, Preventive Maintenance, Operating Assistance, and Planning.
- WFMPD based all Capital-programming costs on information provided by the City of Wichita Falls' Purchasing Department. This includes the projected estimated cost of new replacement buses, shop equipment, and tools.
- WFMPD calculated Capital, Preventive Maintenance, Operating Assistance, and Planning programming costs for each YOE by utilizing FY 2012 as the base year then multiplying by 1.5% per year to increase YOE incrementally.

NOTE: The City of Wichita Falls generally purchases replacement buses two at a time every other year. 2014 and 2016 are the target years for bus purchases.

**SECTION VII  
ANNUAL MPO  
SELF-CERTIFICATION**

## MPO SELF-CERTIFICATION FOR ATTAINMENT AREAS

In accordance with 23 CFR Part 450.334 and 450.220 of the Safe, Accountable, Flexible, Efficient Transportation Equity Act: A Legacy for Users, the Texas Department of Transportation, and the Wichita Falls Metropolitan Planning Organization for the Wichita Falls urbanized area(s) hereby certify that the transportation planning process is addressing the major issues in the metropolitan planning area and is being conducted in accordance with all applicable requirements of:

- (1) 23 U.S.C. 134, 49 U.S.C. 5303, and this subpart;
- (2) Title VI of the Civil Rights Act of 1964, as amended (42 U.S.C. 2000d-1) and 49 CFR part 21;
- (3) 49 U.S.C. 5332, prohibiting discrimination on the basis of race, color, creed, national origin, sex, or age in employment or business opportunity;
- (4) Section 1101(b) of the SAFETEA-LU (Pub. L. 109-59) and 49 CFR part 26 regarding the involvement of disadvantaged business enterprises in USDOT funded projects;
- (5) 23 CFR part 230, regarding the implementation of an equal employment opportunity program on Federal and Federal-aid highway construction contracts;
- (6) The provisions of the Americans with Disabilities Act of 1990 (42 U.S.C. 12101 et seq.) and 49 CFR parts 27, 37, and 38;
- (7) The Older Americans Act, as amended (42 U.S.C. 6101), prohibiting discrimination on the basis of age in programs or activities receiving Federal financial assistance;
- (8) Section 324 of title 23 U.S.C. regarding the prohibition of discrimination based on gender; and
- (9) Section 504 of the Rehabilitation Act of 1973 (29 U.S.C. 794) and 49 CFR part 27 regarding discrimination against individuals with disabilities.

\_\_\_\_\_  
Wichita Falls  
District  
Texas Department of Transportation

\_\_\_\_\_  
District Engineer

\_\_\_\_\_  
Date

\_\_\_\_\_  
Wichita Falls  
Metropolitan Planning Organization  
Policy Board Chairperson

\_\_\_\_\_  
Chairperson

\_\_\_\_\_  
Date