








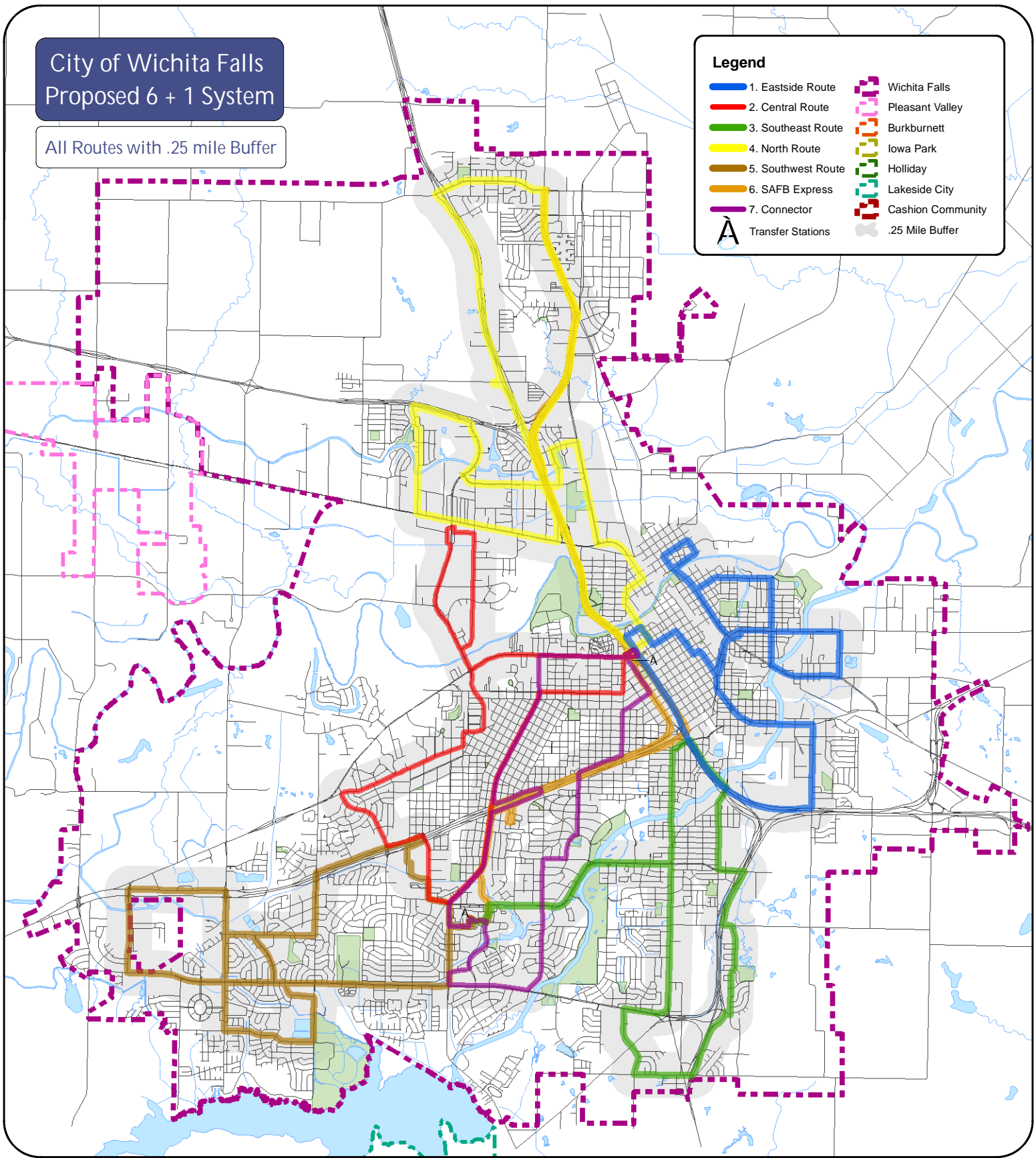


# City of Wichita Falls Proposed 6 + 1 System

All Routes with .25 mile Buffer

## Legend

- █ 1. Eastside Route
- █ 2. Central Route
- █ 3. Southeast Route
- █ 4. North Route
- █ 5. Southwest Route
- █ 6. SAFB Express
- █ 7. Connector
-  Transfer Stations
-  Wichita Falls
-  Pleasant Valley
-  Burkburnett
-  Iowa Park
-  Holiday
-  Lakeside City
-  Cashion Community
-  .25 Mile Buffer



### ROUTE INFORMATION

- Route 1) 14.25 Miles
- Route 2) 14.06 Miles
- Route 3) 14.16 Miles
- Route 4) 19.83 Miles
- Route 5) 15.21 Miles
- Route 6) 23.54 Miles
- Route 7) 13.09 Miles

All routes average 45 - 50 minutes  
 Mean Route Distance = 16.31  
 Total Distance for all Routes Combined = 114.14

